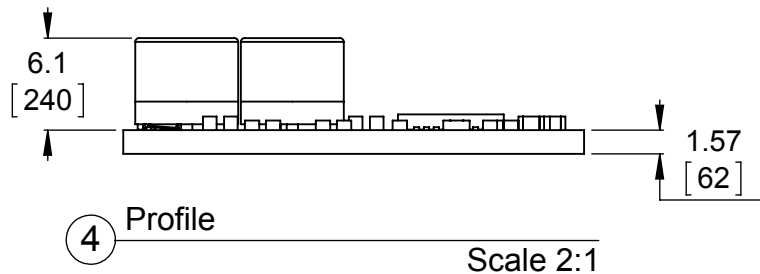


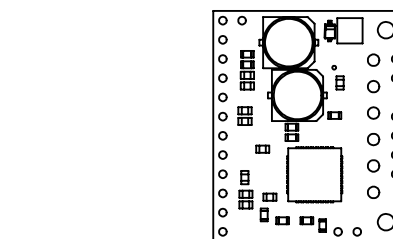
1 Board dimensions (top view)
Scale 2:1

2 Connector callouts (bottom view)
Scale 2:1

3 Isometric view
Scale 2:1



4 Profile
Scale 2:1



5 Actual size
Scale 1:1

1. To get the specified scale, select 100% in print settings.
2. Drill location tolerance: ± 0.1 [± 5].
3. Board edge tolerance: ± 0.3 [± 10].

<https://www.pololu.com/product/2970>

Name: AMIS-30543 Stepper
Motor Driver Carrier

Item number:
2970

Drawing date:

14 December 2015

Units: mm
[mil]

PCB dev code:
md27a

Pololu
Robotics & Electronics

© 2015 Pololu Corporation