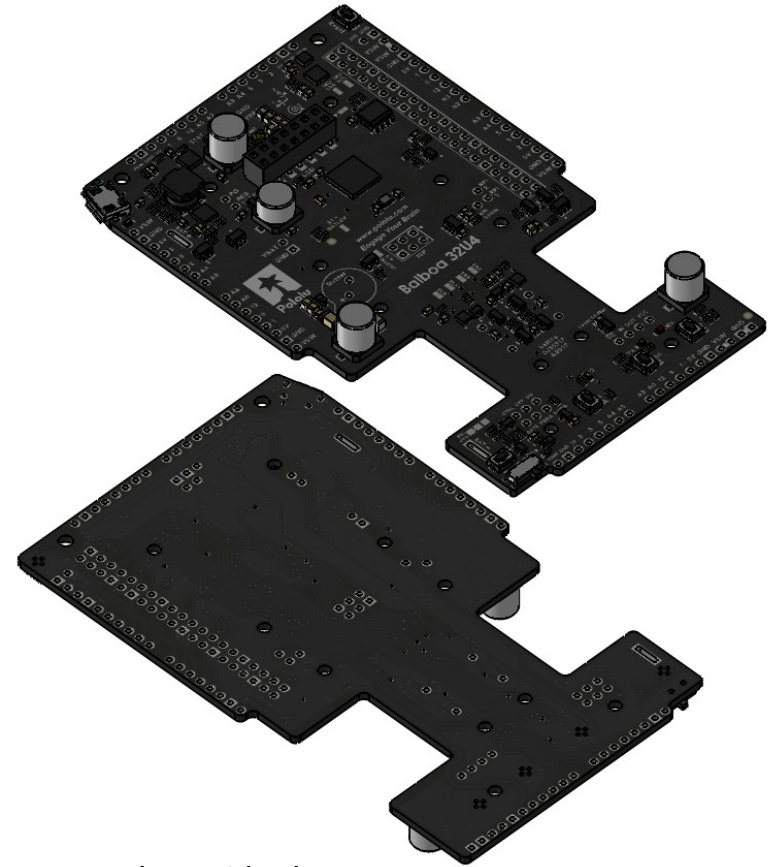


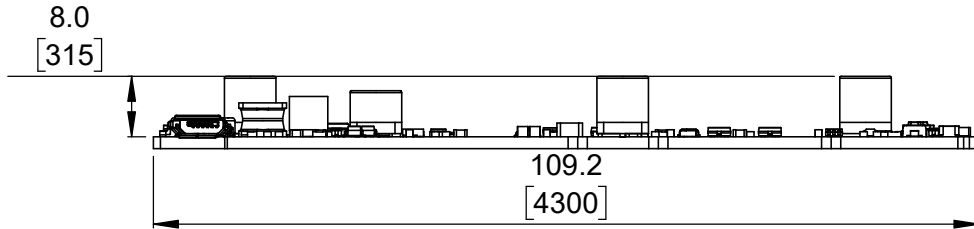
① Top view (actual size)

Scale 1:1



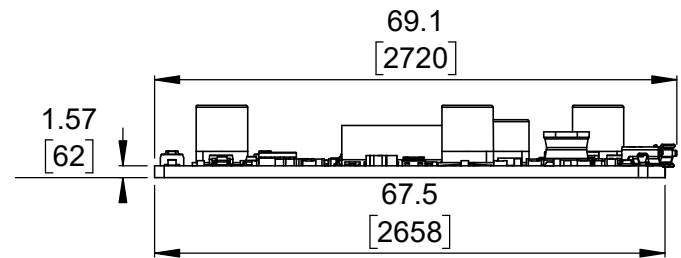
② Isometric view

Scale 3:4



③ Long profile

Scale 1:1



④ Short profile

Scale 1:1

1. To get the specified scale, select 100% in print settings.
2. Drill location tolerance: ± 0.1 [± 5].
3. Board edge tolerance: ± 0.3 [± 10].

<https://www.pololu.com/product/3575>

Name:
Balboa 32U4 Control Board

Item number:
3575

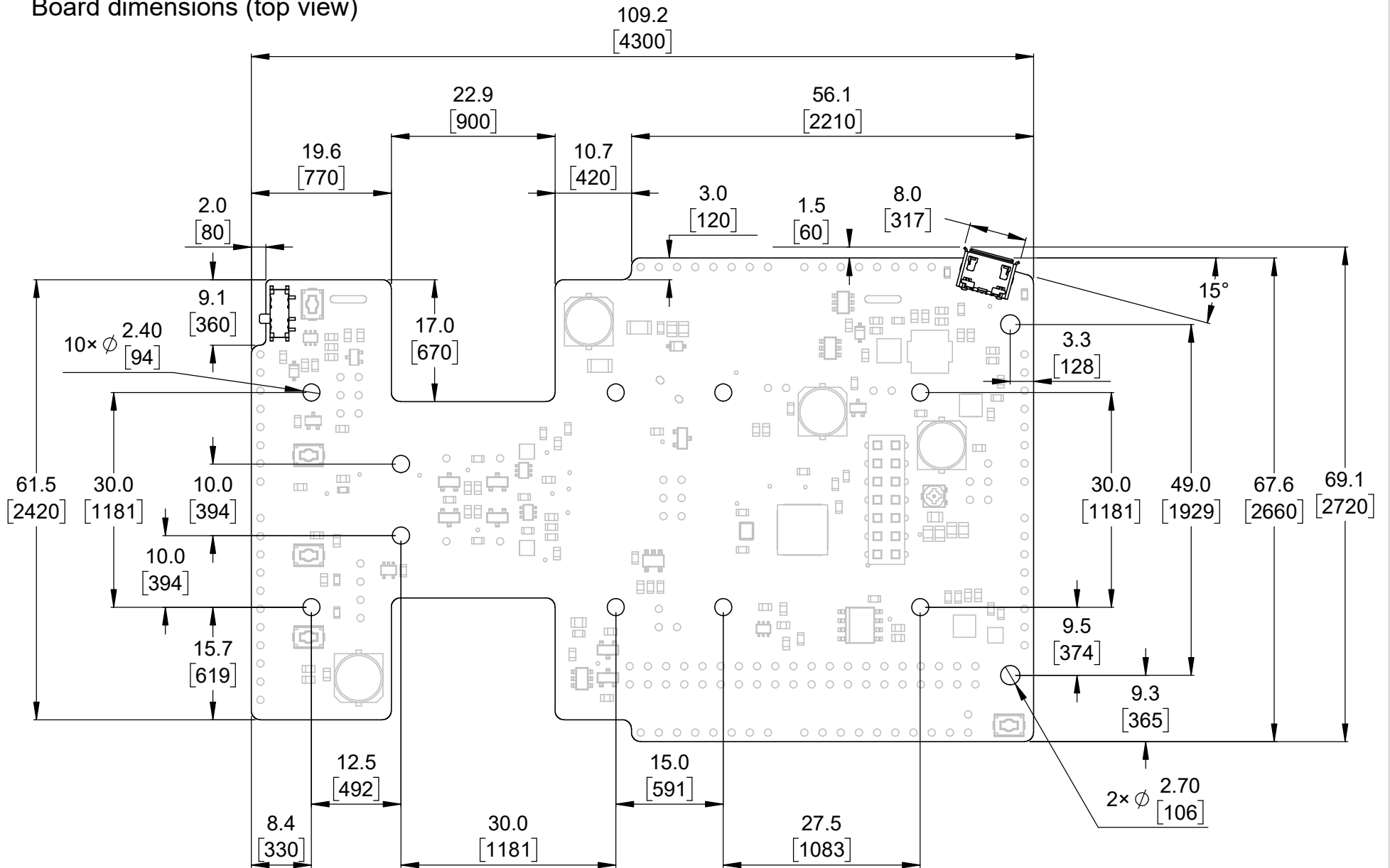
Drawing date:
14 March 2017

Units: mm
[mil]

PCB dev code:
bal01a



Board dimensions (top view)



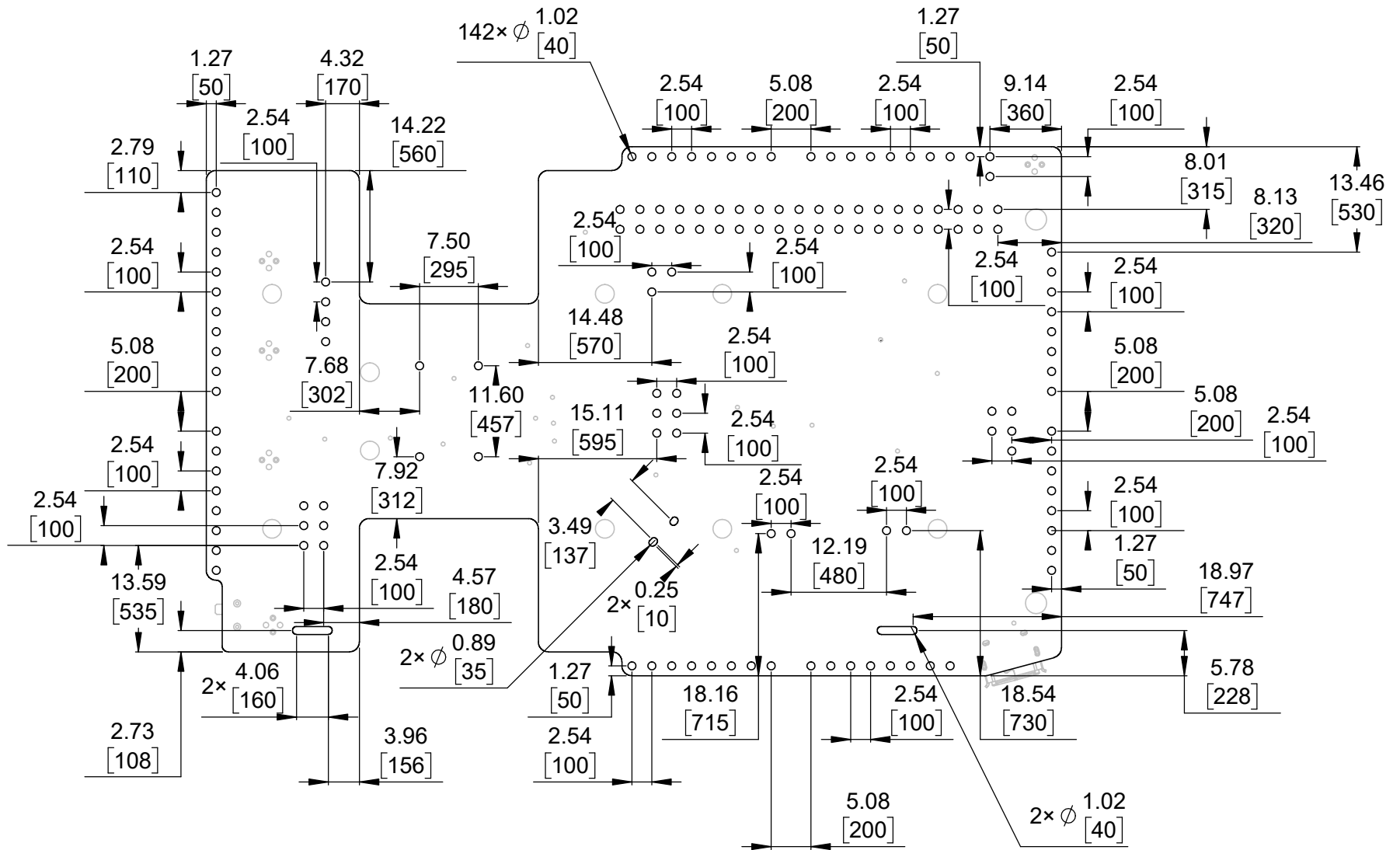
- To get the specified scale, select 100% in print settings.
- Drill location tolerance: ± 0.1 [± 5].
- Board edge tolerance: ± 0.3 [± 10].

Scale: 4:3

<https://www.pololu.com/product/3575>

Name: Balboa 32U4 Control Board		Item number: 3575
Drawing date: 14 March 2017		
Units: mm [mil]	PCB dev code: bal01a	
 © 2017 Pololu Corporation		

Connector callouts (bottom view)



1. To get the specified scale, select 100% in print settings.
2. Drill location tolerance: ± 0.1 [± 5].
3. Board edge tolerance: ± 0.3 [± 10].

Scale: 4:3

<https://www.pololu.com/product/3575>

Name: Balboa 32U4 Control Board		Item number: 3575
Drawing date: 14 March 2017		
Units: mm [mil]	PCB dev code: bal01a	
 © 2017 Pololu Corporation		