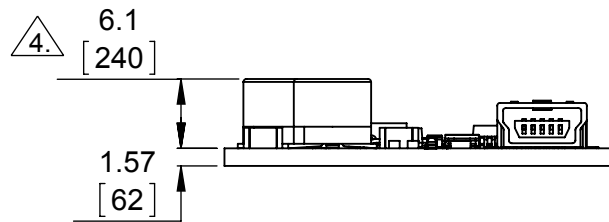


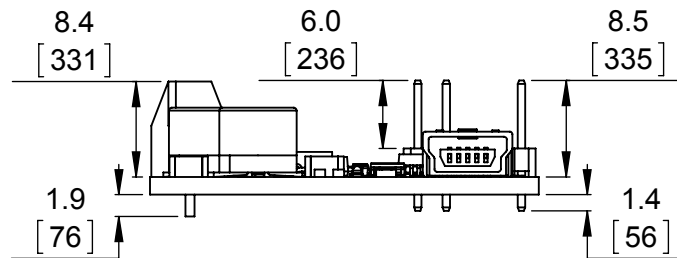
① Board dimensions (top view)
Scale 3:2

② Connector callouts (bottom view)
Scale 3:2

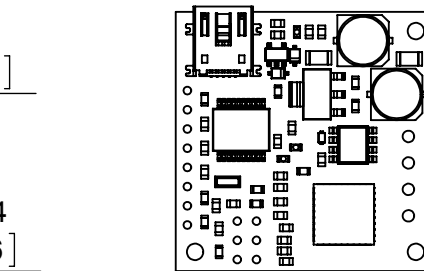
③ Isometric view
Scale 3:2



④ Profile
Scale 3:2



⑤ Profile (with through-hole connectors)
Scale 3:2



⑥ Actual size
Scale 1:1

1. To get the specified scale, select 100% in print settings.
2. Drill location tolerance: ± 0.1 [± 5].
3. Board edge tolerance: ± 0.3 [± 10].
- ④ Height of capacitor above the board is 7.8 [307] for boards manufactured prior to December 2014.

<https://www.pololu.com/product/1392>

Name: Pololu Jrk 21v3 USB Motor Controller with Feedback
Item numbers: 1392, 1394

Drawing date: 24 December 2015

Units: mm [mil]
PCB dev code: umc01a

Pololu
Robotics & Electronics
© 2015 Pololu Corporation