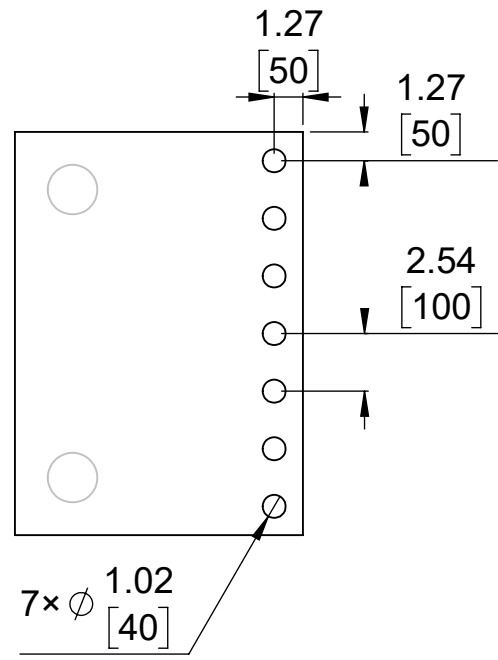
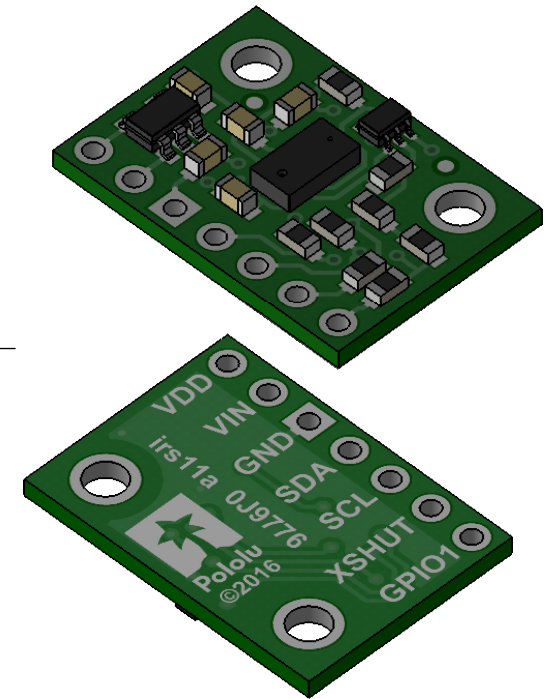


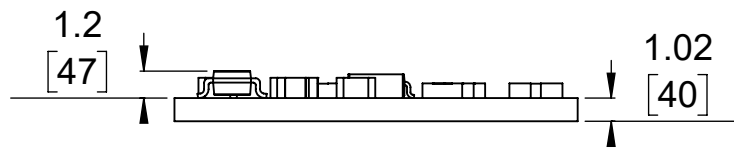
① Board dimensions (top view)
Scale 3:1



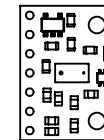
② Connector callouts (bottom view)
Scale 3:1



③ Isometric view
Scale 3:1



④ Profile
Scale 3:1



⑤ Actual size
Scale 1:1

1. To get the specified scale, select 100% in print settings.
2. Drill location tolerance: ± 0.1 [± 5].
3. Board edge tolerance: ± 0.3 [± 10].

<https://www.pololu.com/product/2490>

Name:
VL53L0X Time-of-Flight Distance Sensor
Carrier with Voltage Regulator, 200cm Max

Item number:
2490

Drawing date:
9 August 2016

Units: mm
[mil]

PCB dev code:
irs11a

