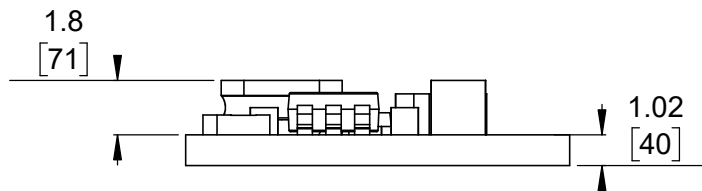


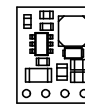
1 Board dimensions (top view)
Scale 4:1

2 Connector callouts (bottom view)
Scale 4:1

3 Isometric view
Scale 4:1



4 Profile
Scale 4:1

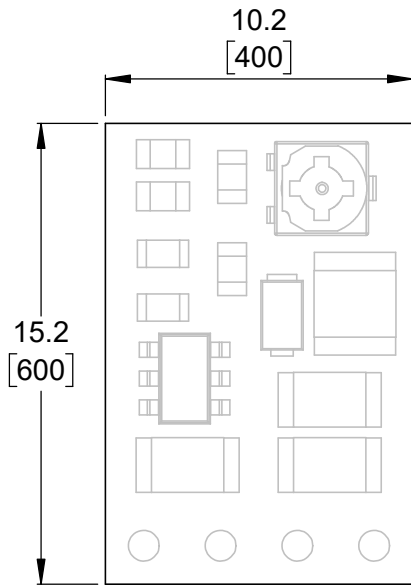


5 Actual size
Scale 1:1

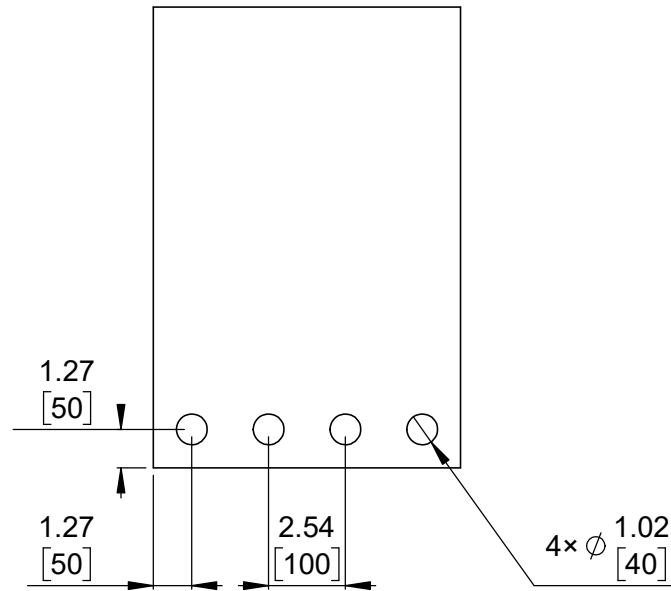
1. To get the specified scale, select 100% in print settings.
2. Drill location tolerance: ± 0.1 [± 5].
3. Board edge tolerance: ± 0.3 [± 10].

<https://www.pololu.com/product/3791>

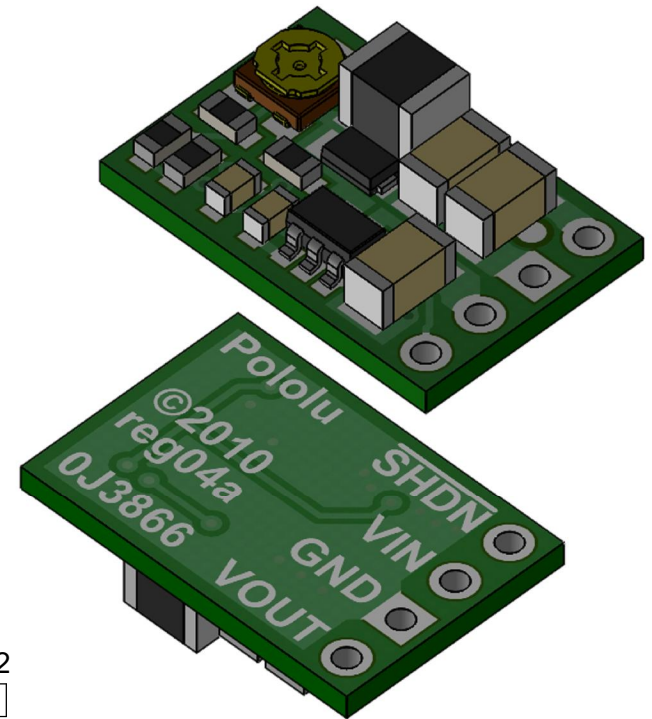
Name: Step-Down Voltage Regulator D24V3Fx, D24V6Fx, and D36V6Fx		Item number: 2097-2100, 2106-2109, 3791-3797
Drawing date: 31 August 2018	Dev code: reg04b	 © 2018 Pololu Corporation
Units: mm [mil]	Material: mixed	



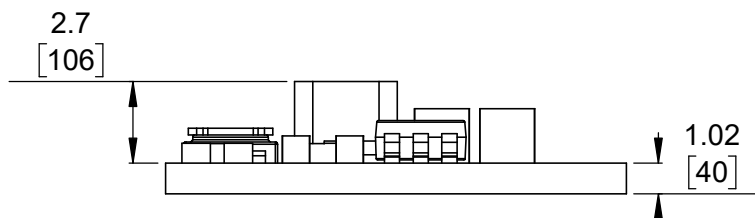
① Board dimensions (top view)
Scale 4:1



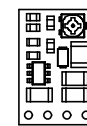
② Connector callouts (bottom view)
Scale 4:1



③ Isometric view
Scale 4:1




④ Profile
Scale 4:1



⑤ Actual size
Scale 1:1

1. To get the specified scale, select 100% in print settings.
2. Drill location tolerance: ± 0.1 [± 5].
3. Board edge tolerance: ± 0.3 [± 10].

<https://www.pololu.com/product/3798>

Name: Adjustable Step-down Voltage Regulator D24V3Ax, D24V6Ax, D36V6Ax		Item number: 2101-2104, 3798-3799
Drawing date: 31 August 2018	Dev code: reg04a	 © 2018 Pololu Corporation
Units: mm [mil]	Material: mixed	