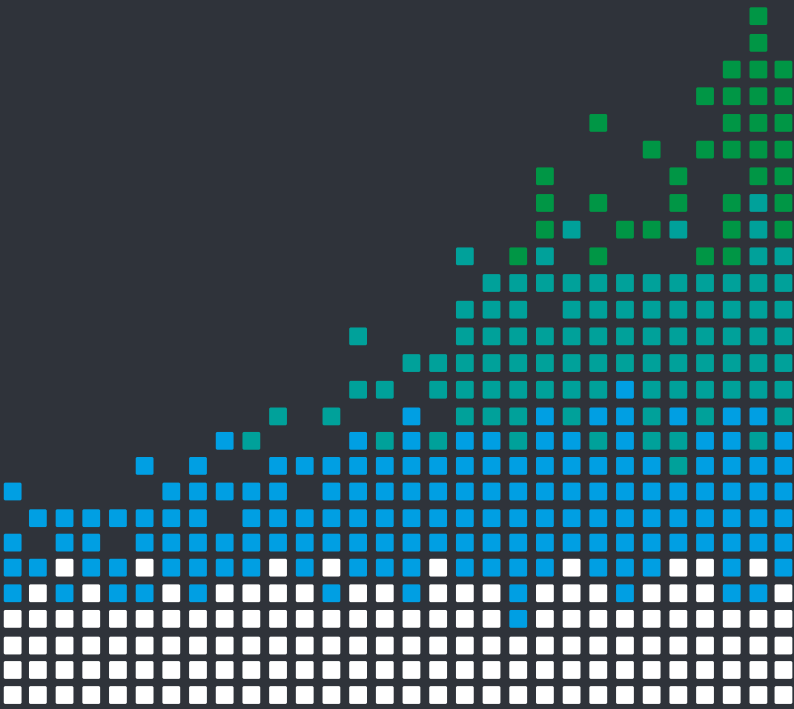


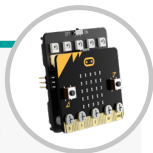
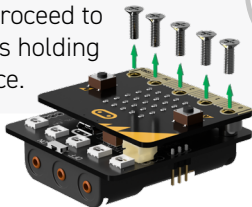
INTERFACE BOARD FOR USE WITH SERVO:LITE BOARD



BUILD INSTRUCTIONS

1

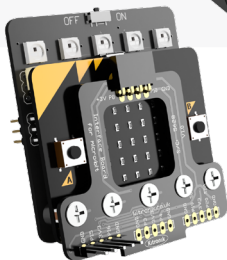
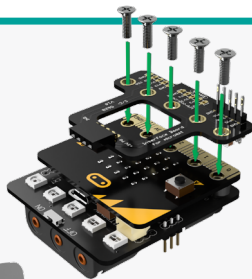
Lay your Servo:Lite board on a flat surface and proceed to remove all 5 screws holding the micro:bit in place.



NOTE: Make sure to hold the components in place as this will make the next step easier.

2

Place the Interface board on top of the micro:bit as shown, lining up the contacts on the rear of the board with the pads on the micro:bit and insert the longer M3x10mm screws provided.



USE WITH :MOVE MINI

1

Once the Interface board has been fitted to the Servo:Lite board, it can be installed into the :MOVE mini. Connect the servos and slot the lower tab of the Interface board into the slot in the base of the :MOVE mini and push backwards to snap into place.



2

GET CODING!

Visit kitronik.co.uk/5628
for help.





TOOLS REQUIRED

- Small Phillips Screwdriver



STOCK CODE

5628





WARNING : Contents may inspire creativity

T: 0845 8380781

W: www.kitronik.co.uk

E: support@kitronik.co.uk

 **Designed & manufactured
in the UK by** 



[kitronik.co.uk/twitter](https://twitter.com/kitronik)



[kitronik.co.uk/facebook](https://facebook.com/kitronik)



[kitronik.co.uk/youtube](https://youtube.com/kitronik)



[kitronik.co.uk/google](https://google.com/kitronik)



For more information on RoHs and CE please visit kitronik.co.uk/rohs-ce. Children assembling this product should be supervised by a competent adult. The product contains small parts so should be kept out of reach of children under 3 years old.