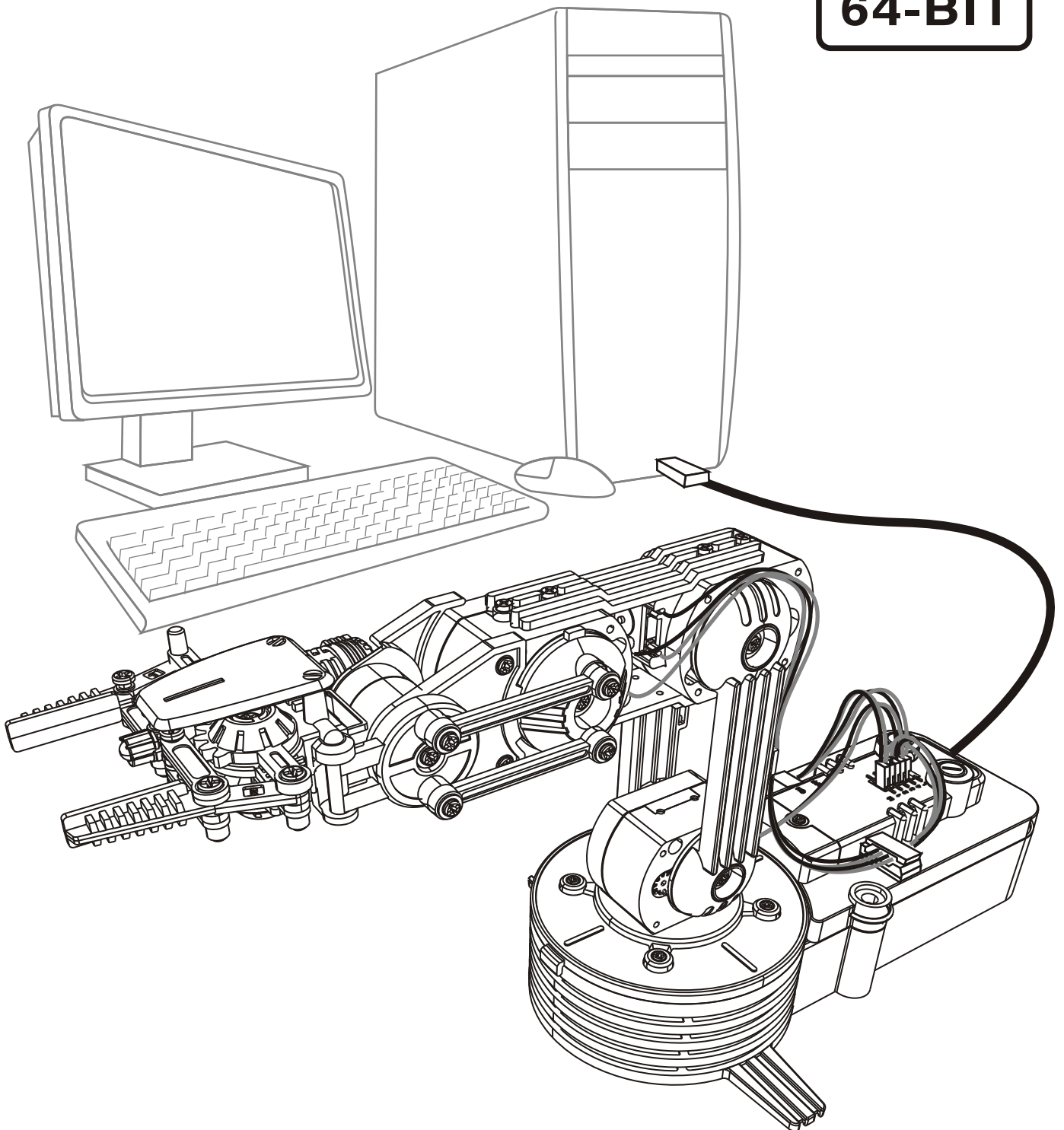


ROBOTIC ARM EDGE

Robotic Arm Edge with USB PC Interface
User's Manual

64-BIT



Robotic Arm Edge with USB PC Interface User's Manual

CONTENTS

Product Introduction	01
Warning	01
Caution	01
1.SET UP (For Windows XP 64-bit version)	
1-1.Hardware and system requirements	02
1-2.Install USB Driver and MAIN PROGRAM	02
2.SET UP (For Windows VISTA 64-bit version)	
2-1.Hardware and system requirements	12
2-2.Install USB Driver and MAIN PROGRAM	12
3.SET UP (For Windows 7 64-bit version)	
3-1.Hardware and system requirements	22
3-2.Install USB Driver and MAIN PROGRAM	22

4.HOW TO PLAY

4-1.Start the program	32
4-2.Opening animation	32
4-3.Menu	32
4-4.Basic mode	33
4-5.Program mode	34
4-6.Program mode operation guide	35

5.TROUBLESHOOTING

5-1. USB port connection	42
5-2. Gearbox movement	42

Product Introduction

This kit allows your existing Robotic Arm Edge to communicate with your personal computer through the USB port.

It is compatible with Windows XP / Vista / 7 (64-bit version) operating system.

Software includes below functions:

- BASIC mode: Use your keyboard or mouse to have real time manual control of the arm.
- PROGRAM mode: Create, edit, load, or save programmable files.

It creates a fun way of learning and experimenting with your Robotic Arm Edge through your computer.

Warning

All rights reserved, reproduction in any manner in whole or in part without permission of OWI Inc. is prohibited.

Caution

To prevent damage to the board, kindly avoid the following:

- ◆high humidity.
- ◆direct sunlight.
- ◆static electricity.
- ◆reach of small children.
- ◆liquid or flammable objects.

Never disassemble or reassemble the interface board as it may cause short circuit, injury or electric shock.

1.SET UP (For Windows XP 64-bit version)

1-1.Hardware and system requirements

OS : Windows XP(works only with 64-bit version)

CPU : Pentium3, 1.0GHz or higher

Memory : 256MB or higher

Hardware Disk Space : 100MB or more

Display : Super VGA (800x600) or higher

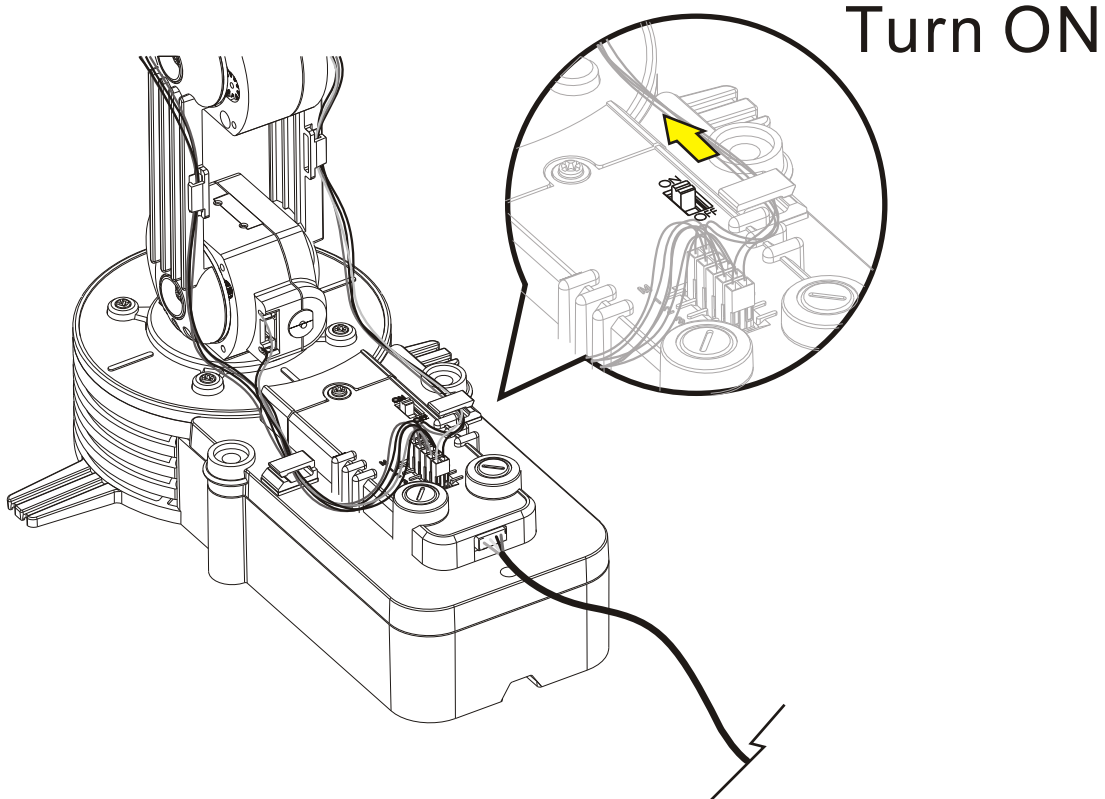
Color monitor with high color 16-bit or higher

1-2.Install USB Driver and MAIN PROGRAM

A.Insert the disk into your CD-ROM drive.

B.Connect Robotic Arm Edge and PC with the USB cable.

C.Turn ON the Robotic Arm Edge.

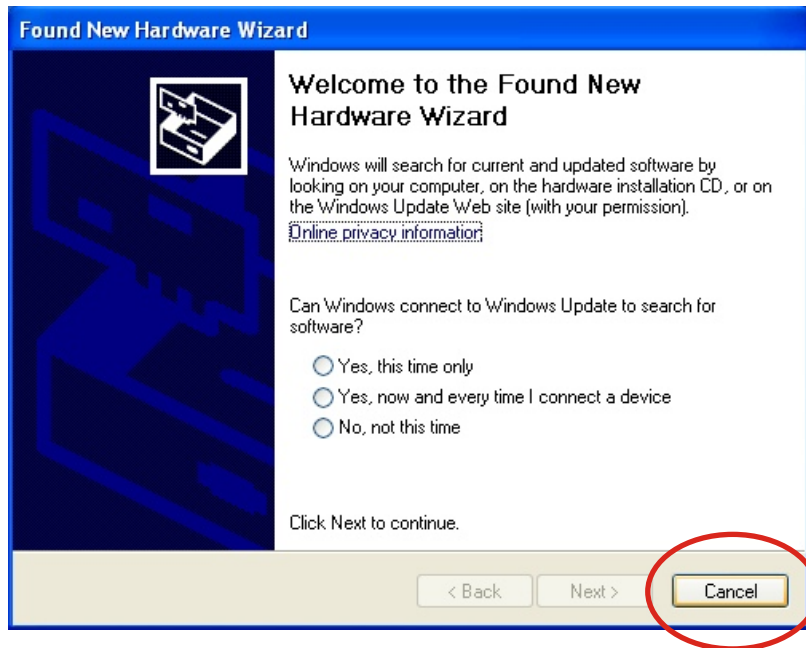


D. Install USB Driver.

Step1



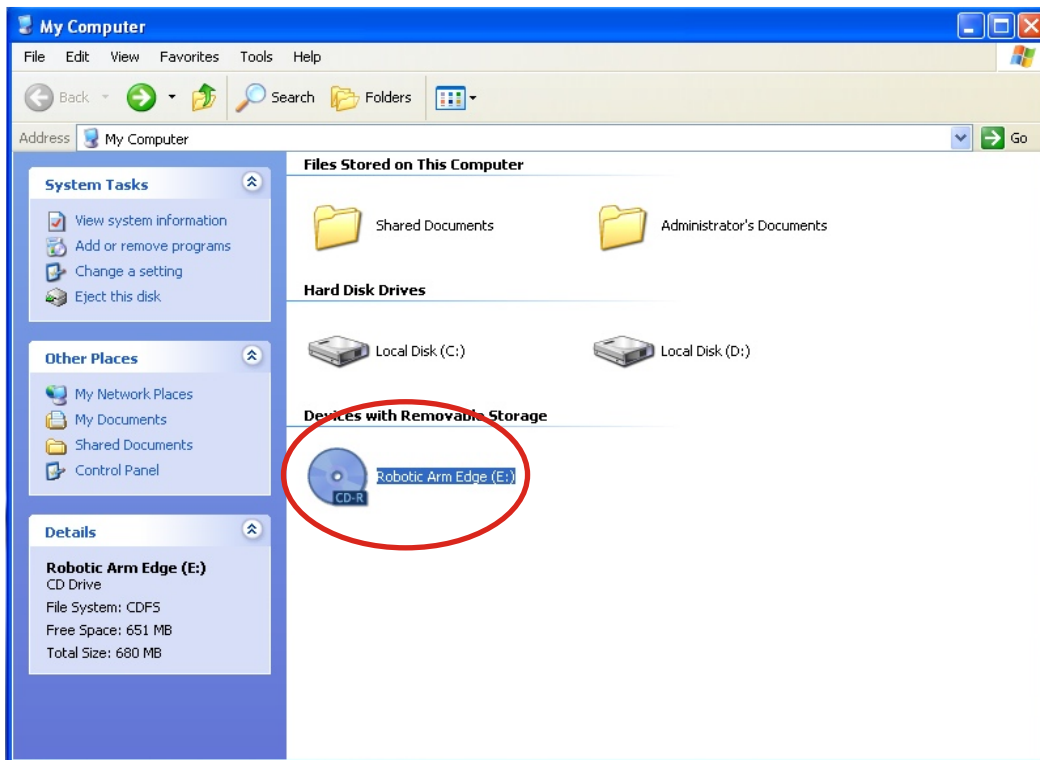
Step2 Choose "Cancel".



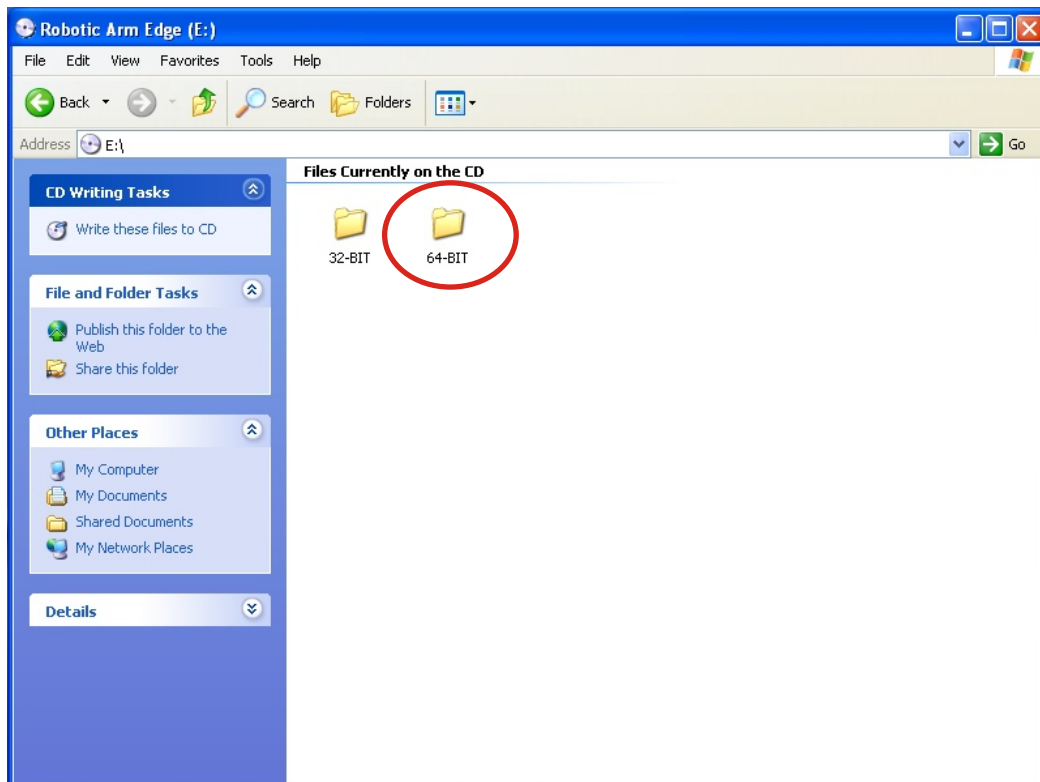
Step3 Choose "My Computer".



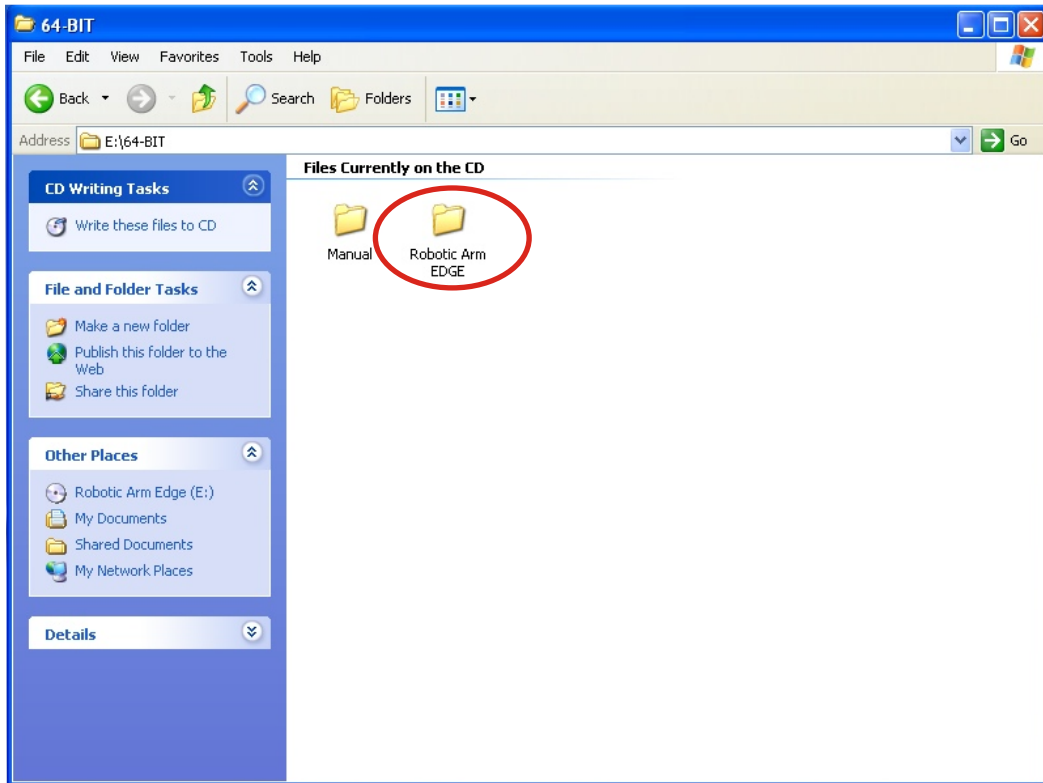
Step4 Click your CD-ROM icon.



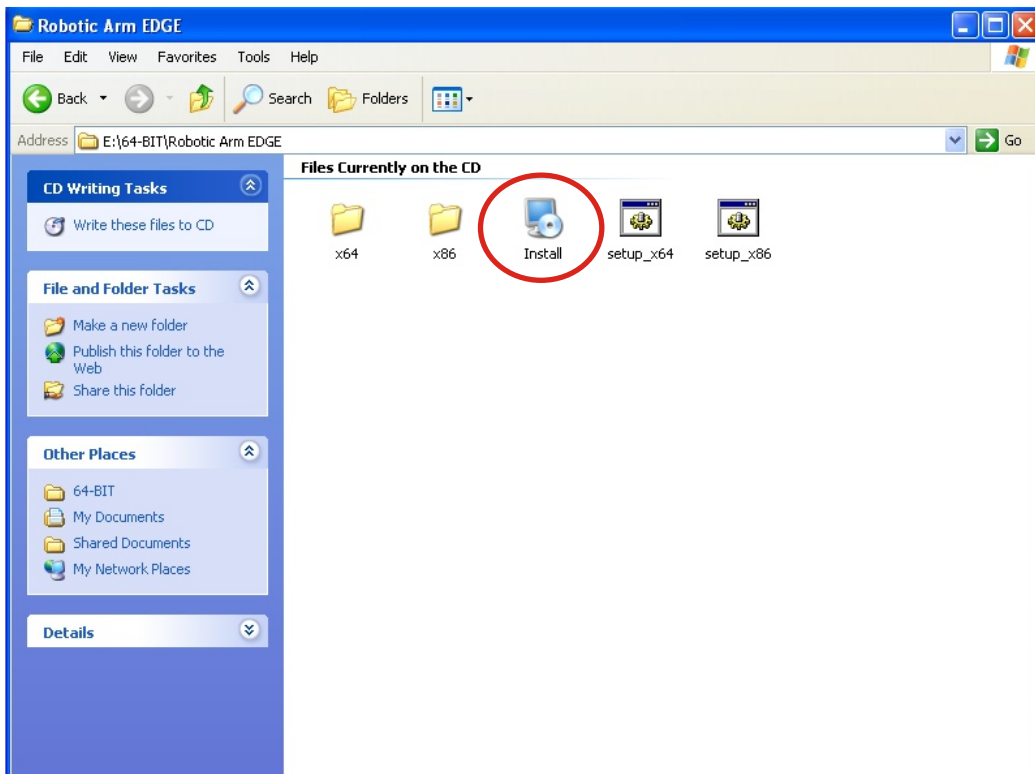
Step5 Choose "64-BIT" folder.



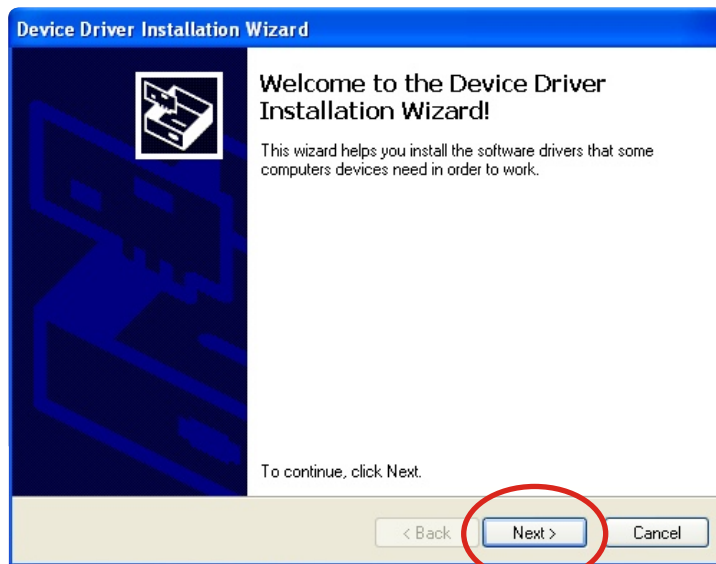
Step6 Choose “ Robotic Arm EDGE ” folder.



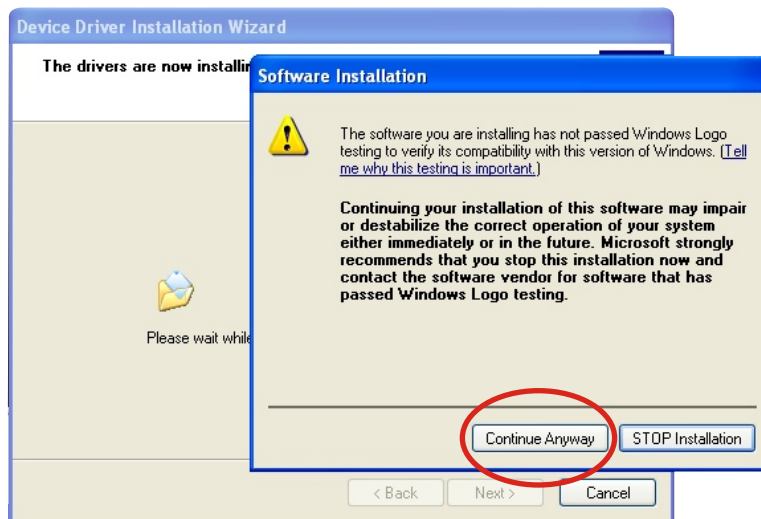
Step7 Click “ Install ” icon.



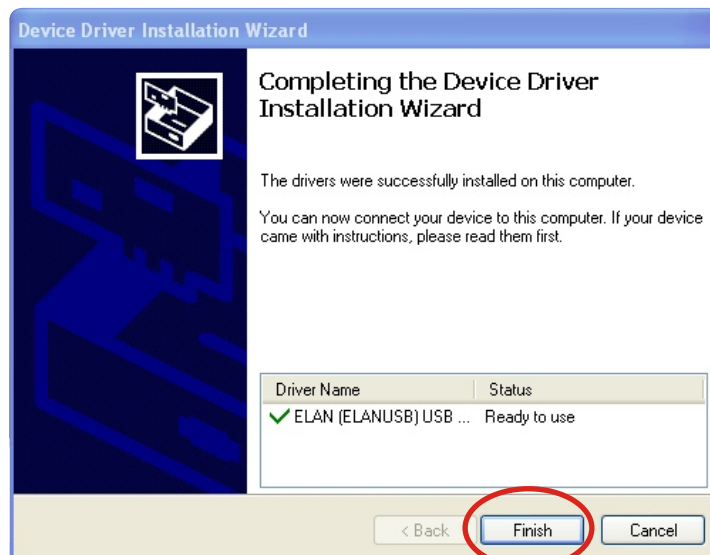
Step8 Click "Next" to continue.



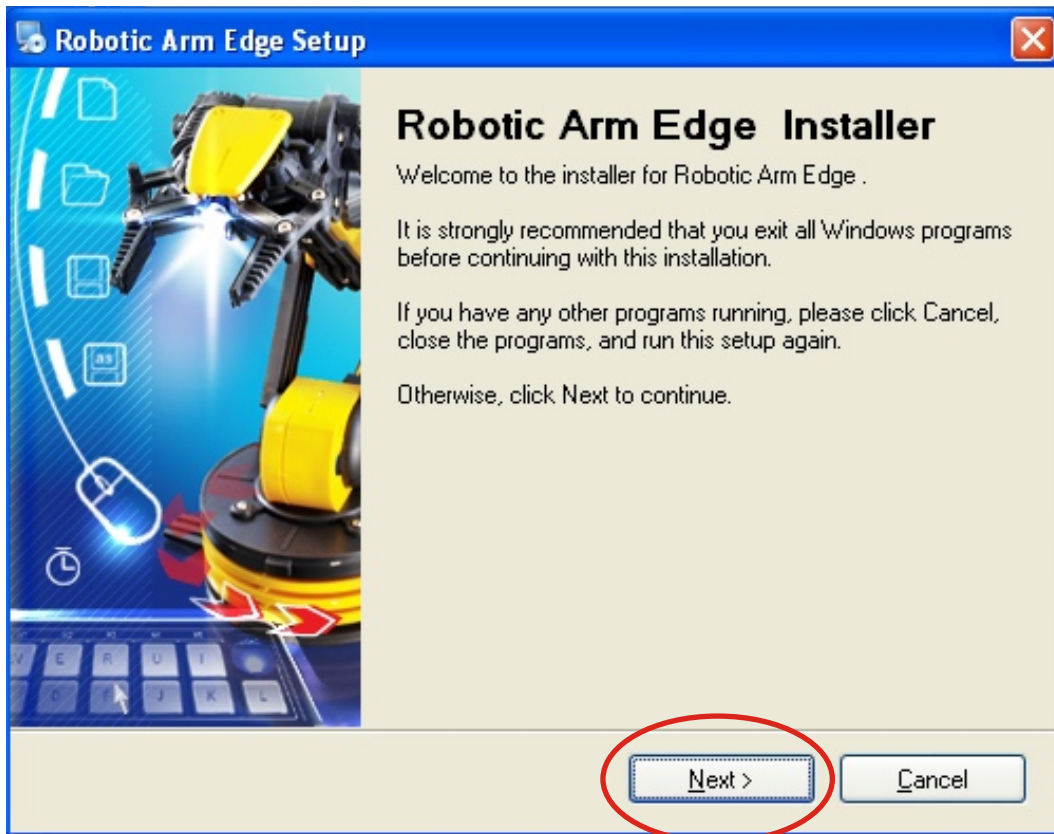
Step9 Click "Continue Anyway" .



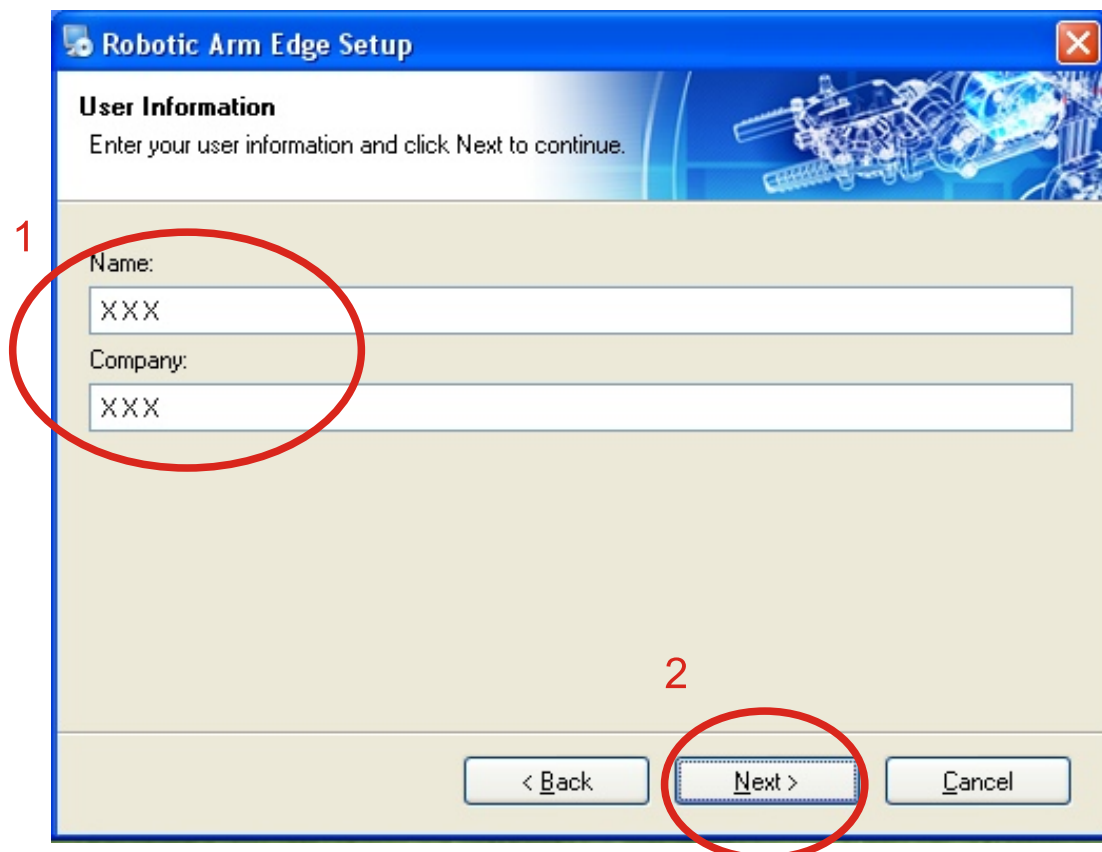
Step10 Finish USB DRIVER Install.



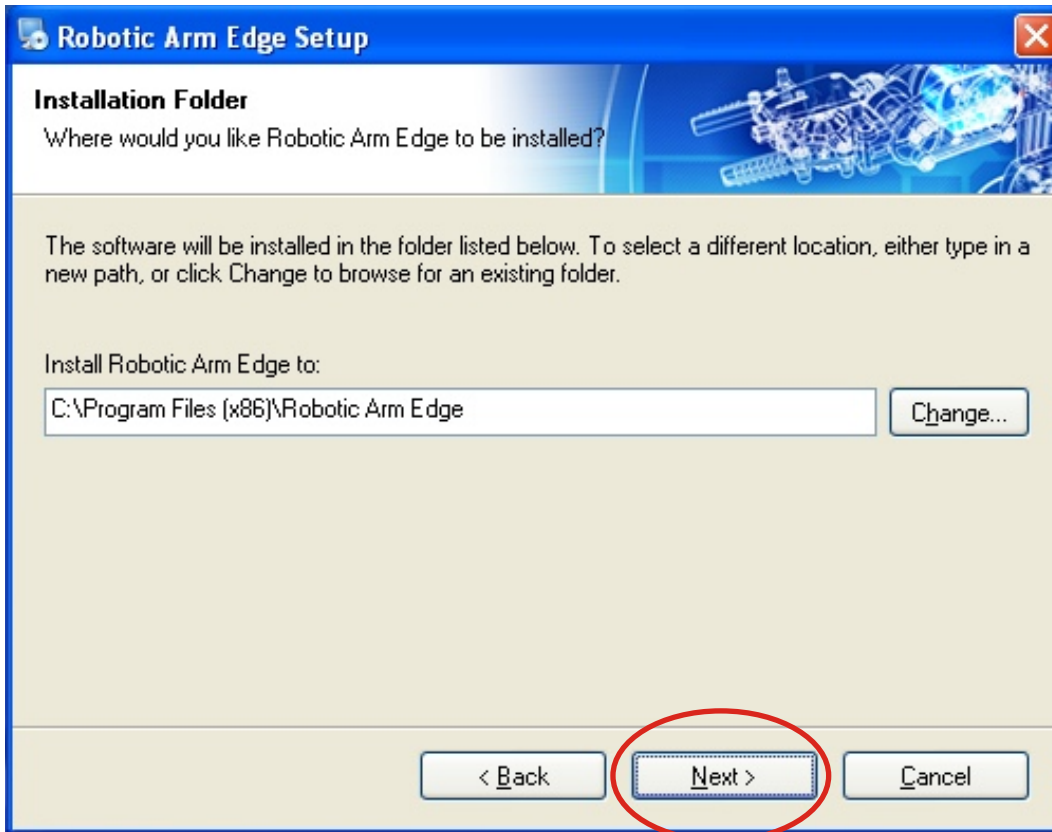
Step11 Click "Next" to continue.



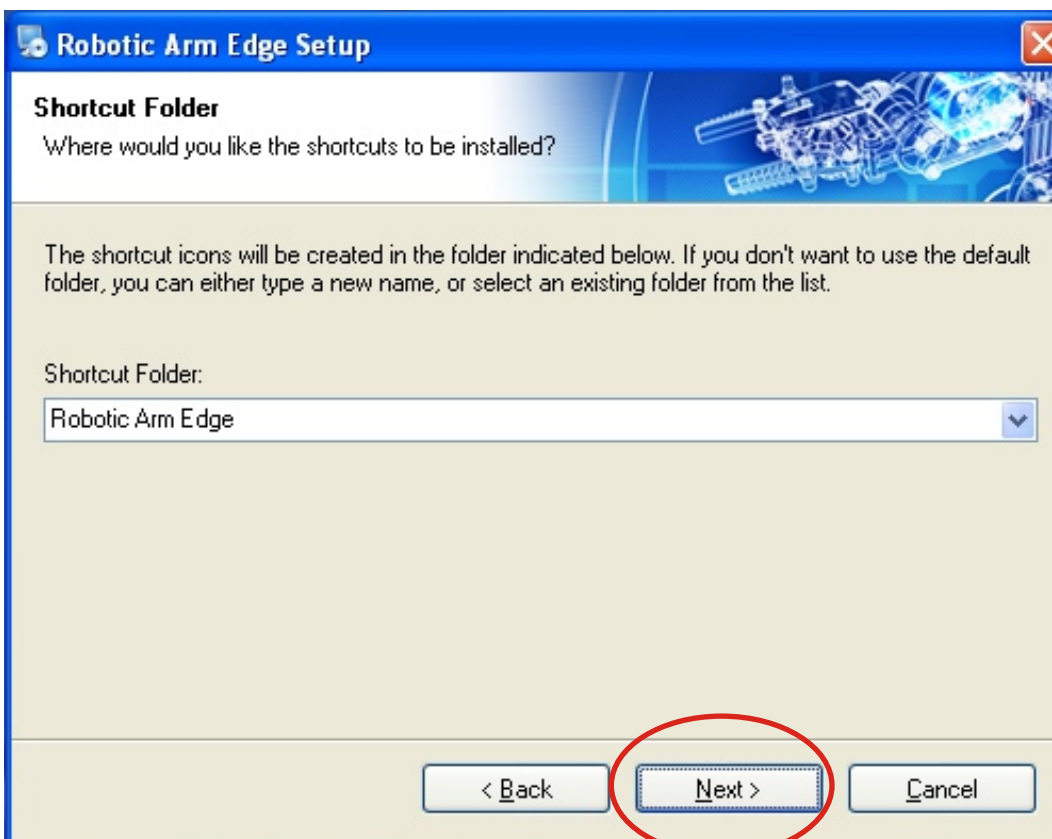
Step12 Fill in your name or company and click "Next" to continue.



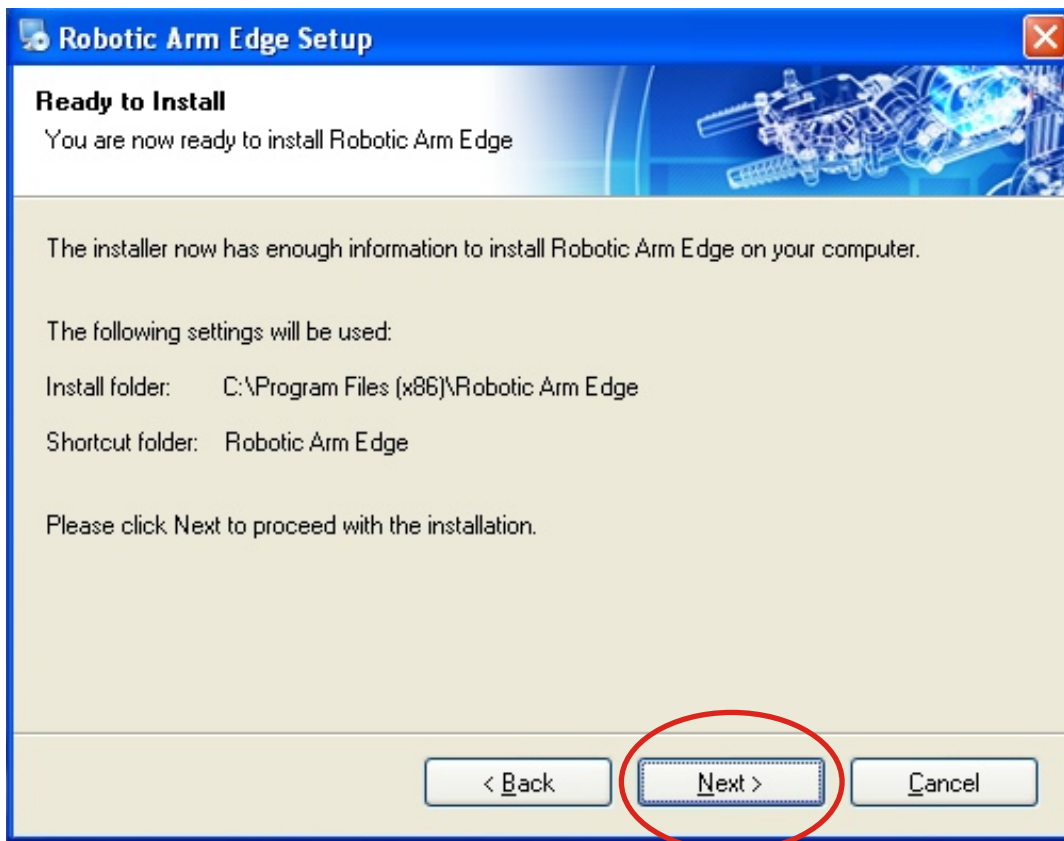
Step13 Click "Next" to continue.



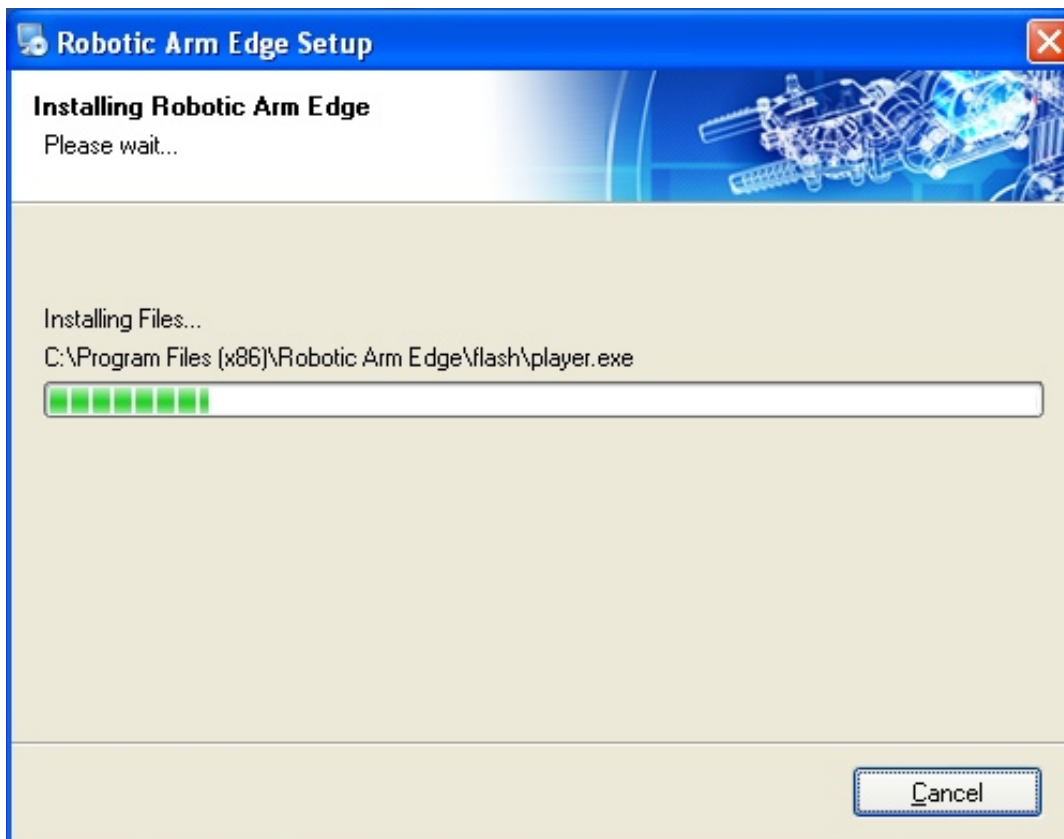
Step14 Click "Next" to continue.



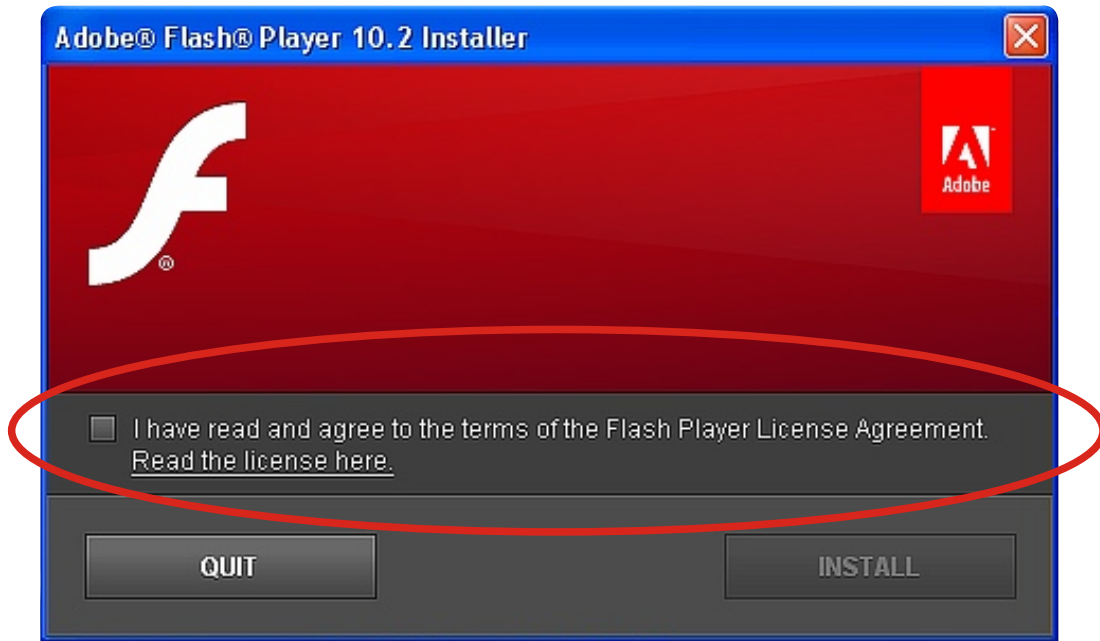
Step15 Click "Next" to continue.



Step16 Wait.....



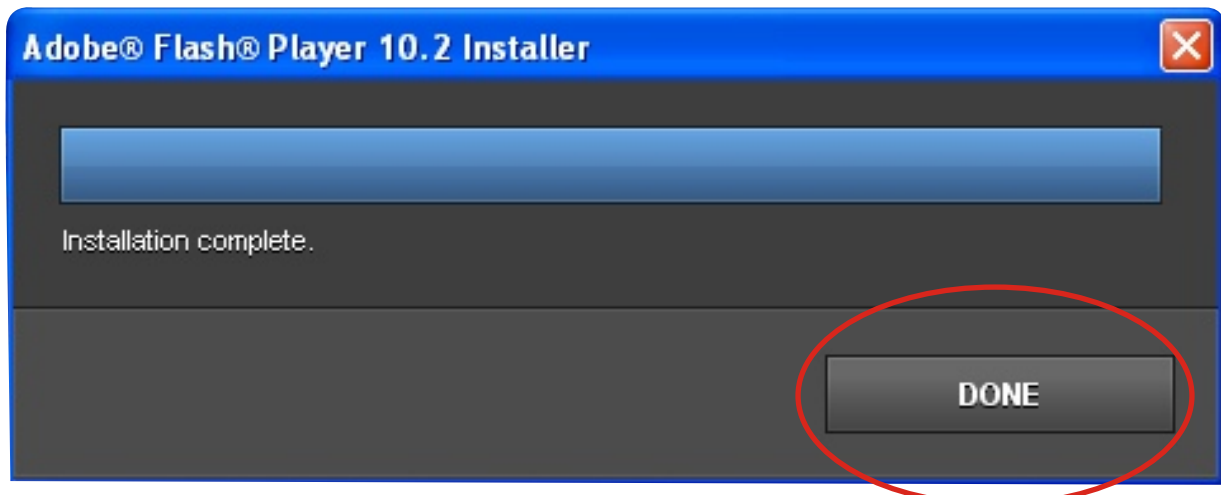
Step17 Check the box “ I have read and agree to the terms ” .



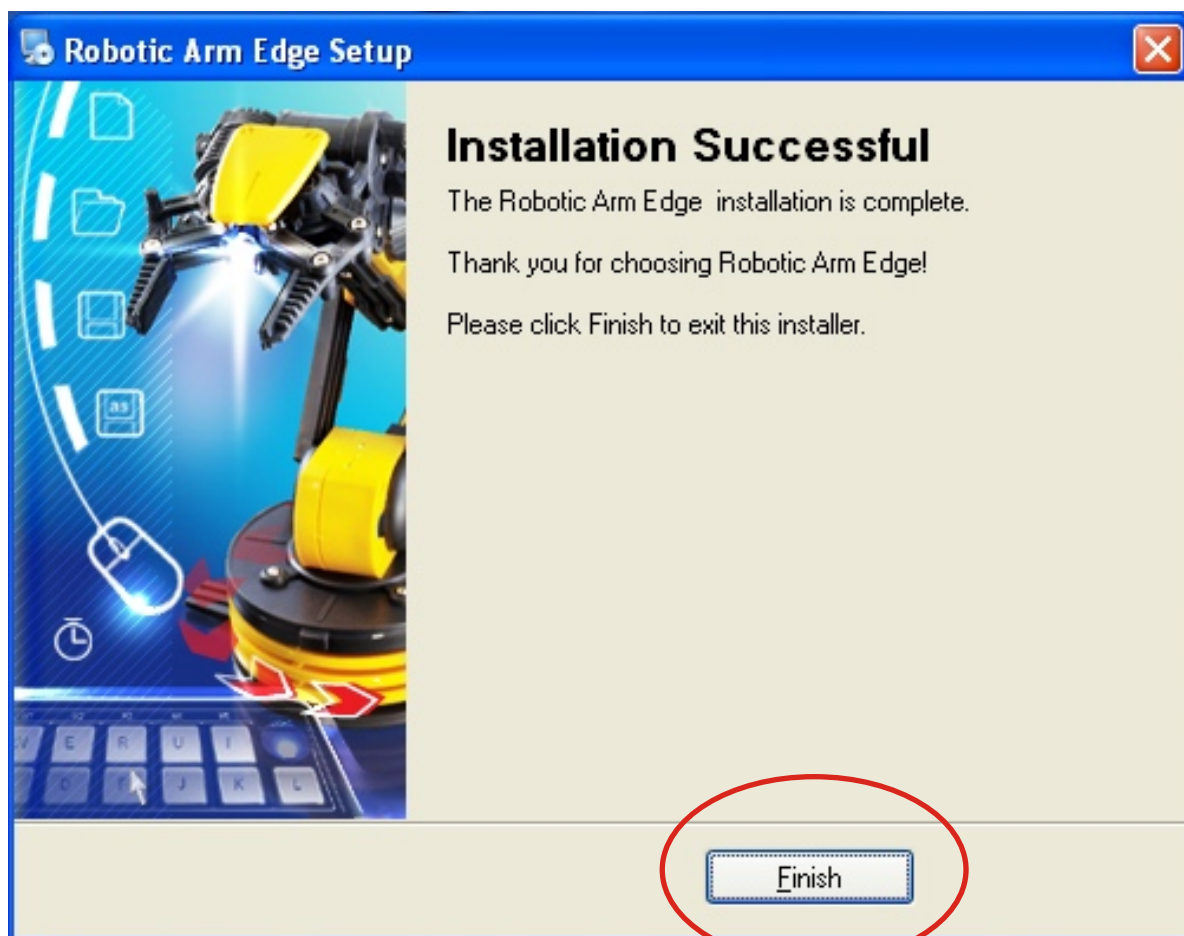
Step18 Click “ INSTALL ” to continue.



Step19 Click "Done" to continue.



Step20 Finish setup.



2.SET UP (For Windows VISTA 64-bit version)

2-1.Hardware and system requirements

OS : Windows VISTA(works only with 64-bit version)

CPU : Pentium3, 1.0GHz or higher

Memory : 256MB or higher

Hardware Disk Space : 100MB or more

Display : Super VGA (800x600) or higher

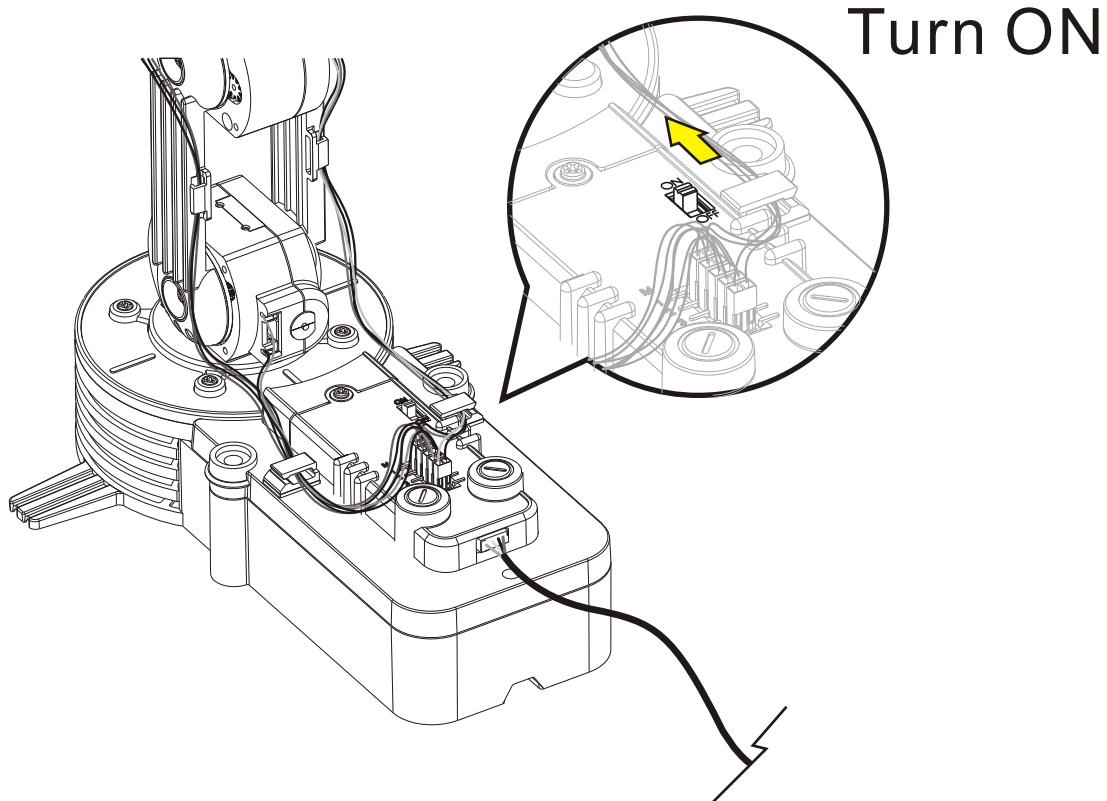
Color monitor with high color 16-bit or higher

2-2.Install USB Driver and MAIN PROGRAM

A.Insert the disk into your CD-ROM drive.

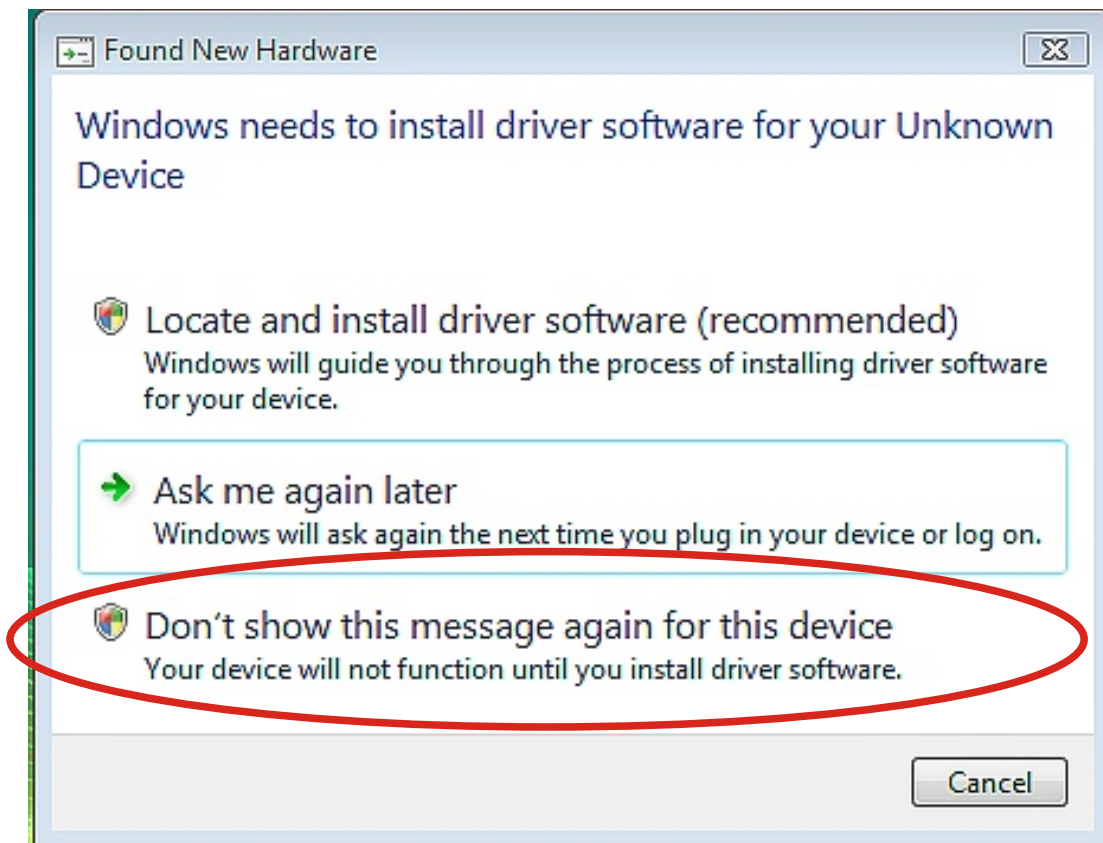
B.Connect Robotic Arm Edge and PC with the USB cable.

C.Turn ON the Robotic Arm Edge.

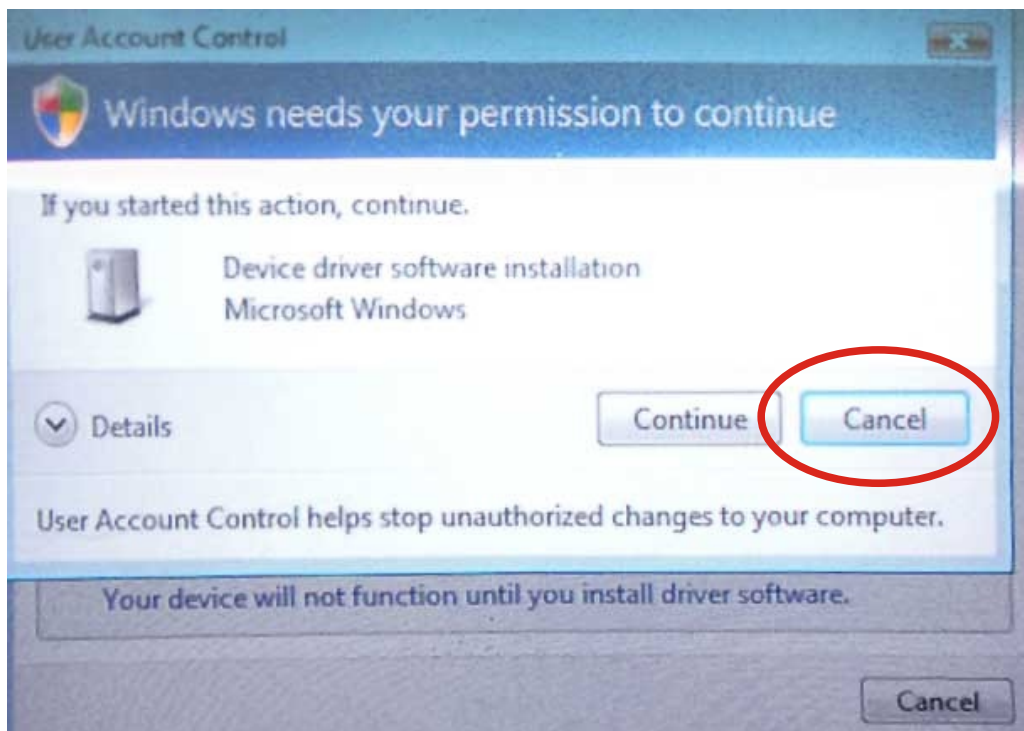


D. Install USB Driver.

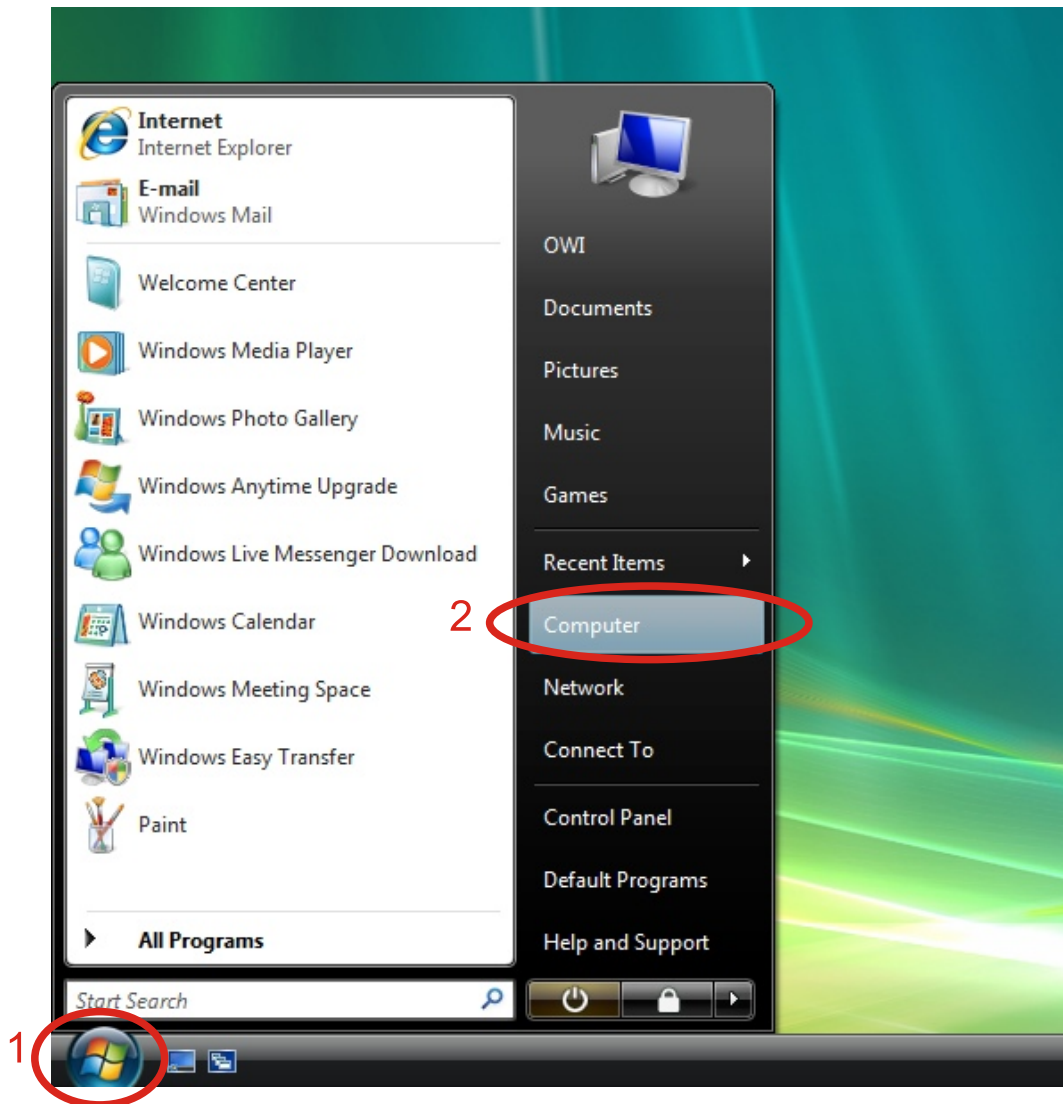
Step1 Choose " Don't show this message again for this device. "



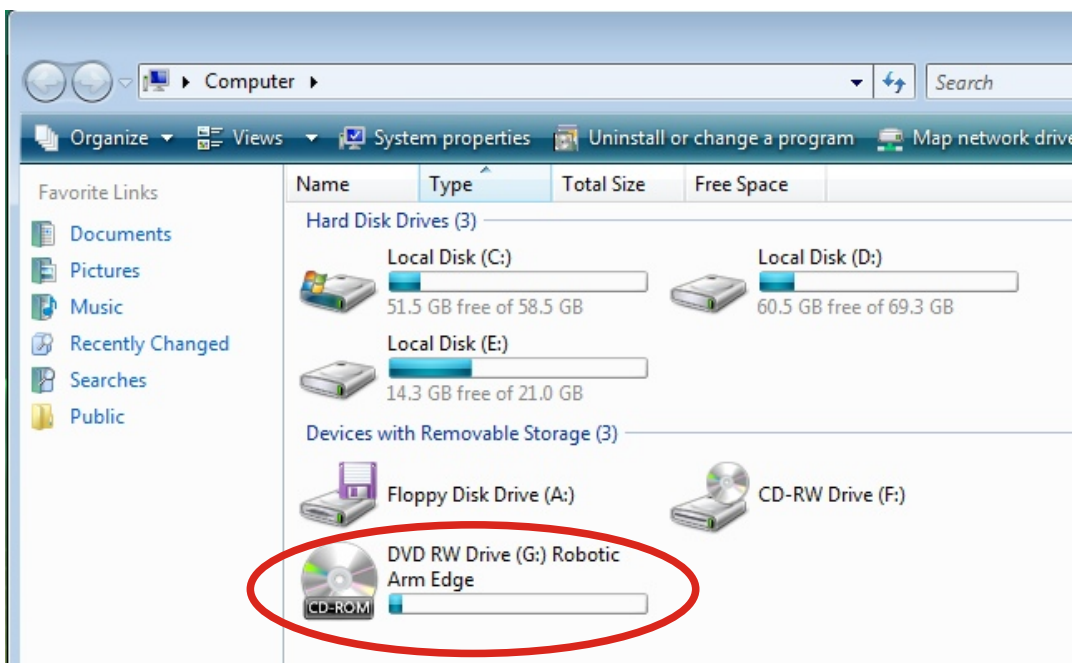
Step2 Click " Cancel " to go next.



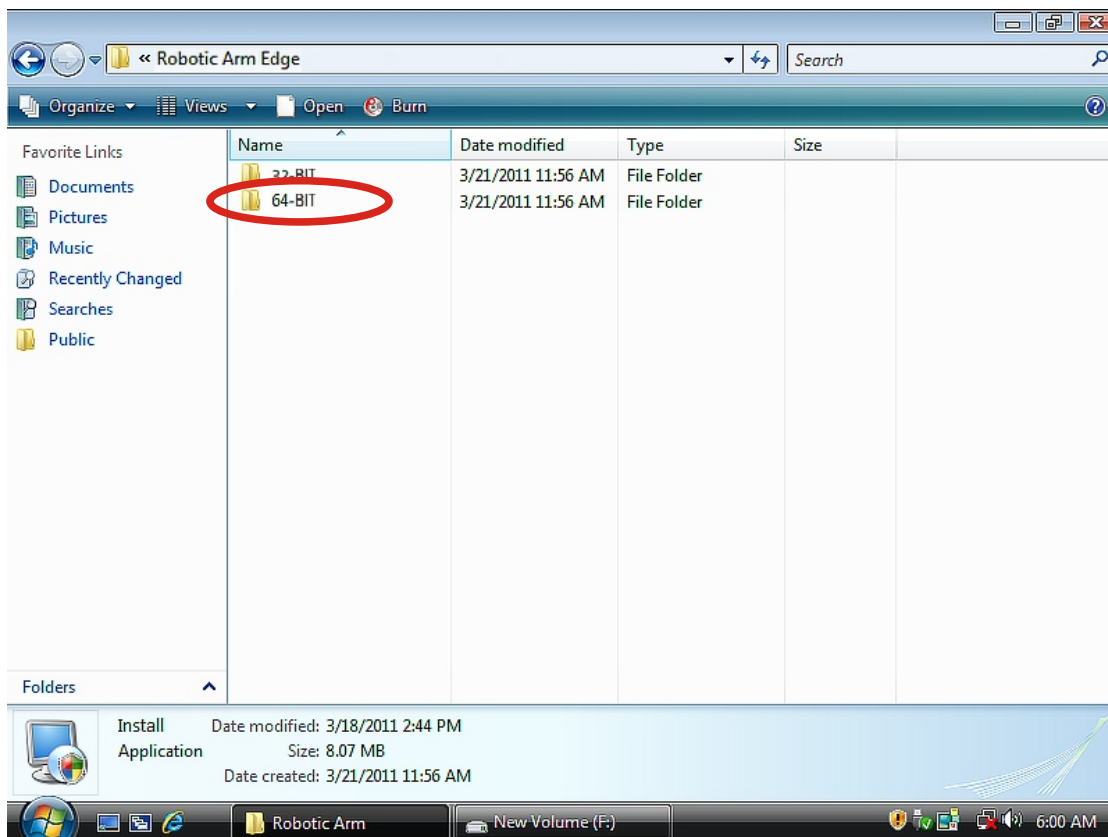
Step3 Go to "Computer" choice.



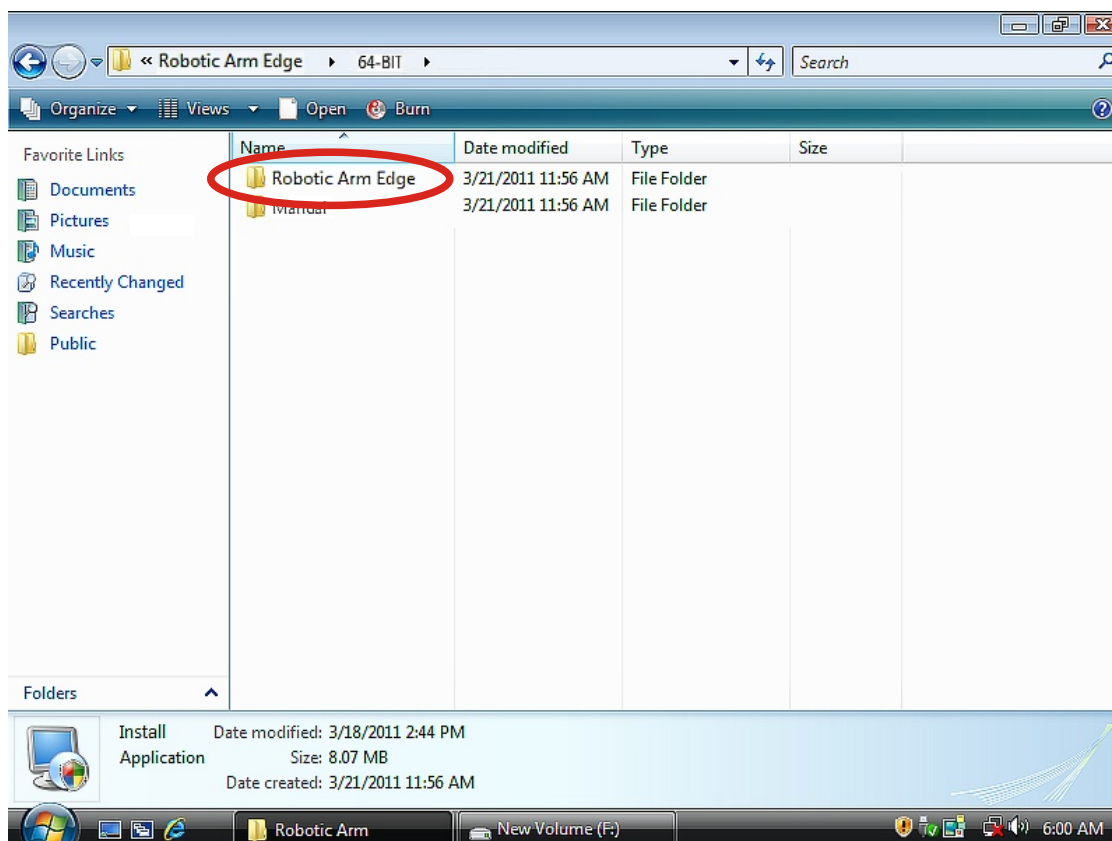
Step4 Click your CD-ROM icon.



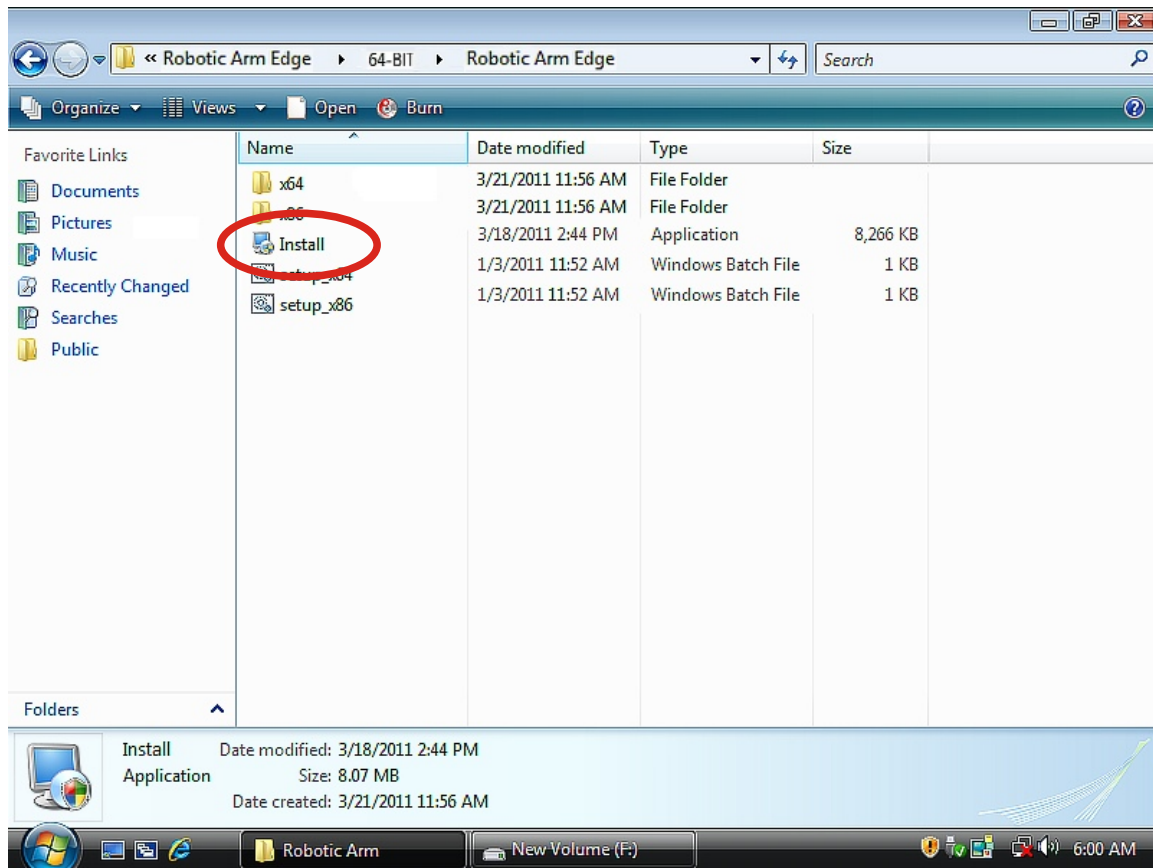
Step5 Choose " 64-BIT " folder.



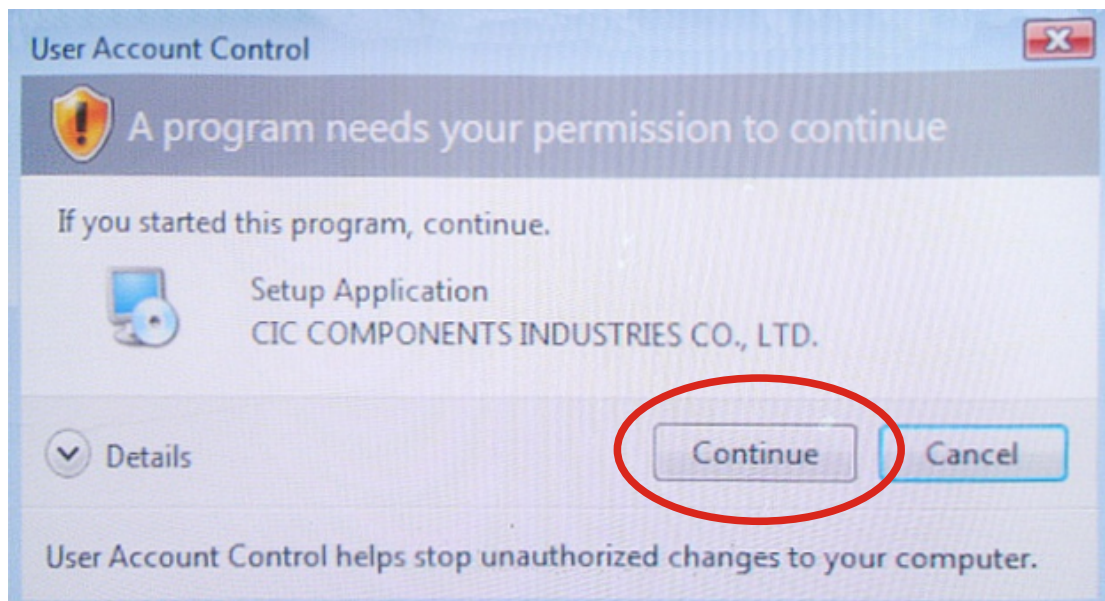
Step6 Choose " Robotic Arm Edge ".



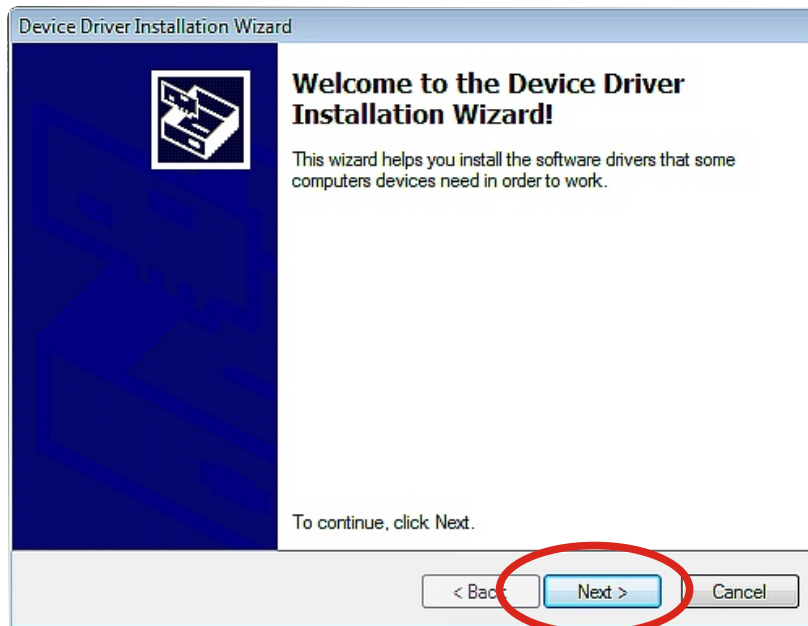
Step7 Click "Install" icon.



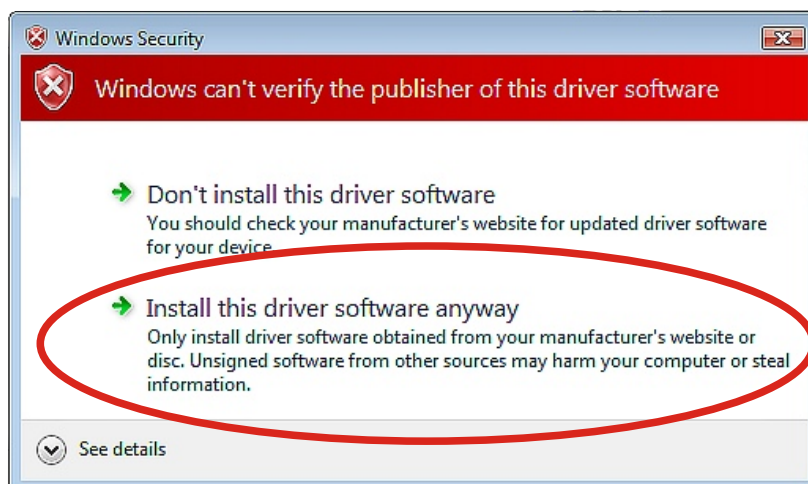
Step8 Click "Continue" to continue.



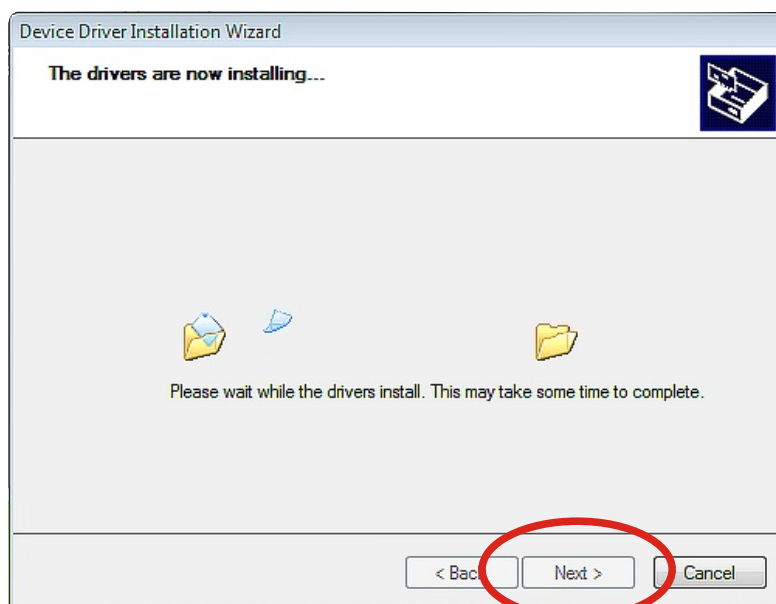
Step9 Click " Next " to continue.



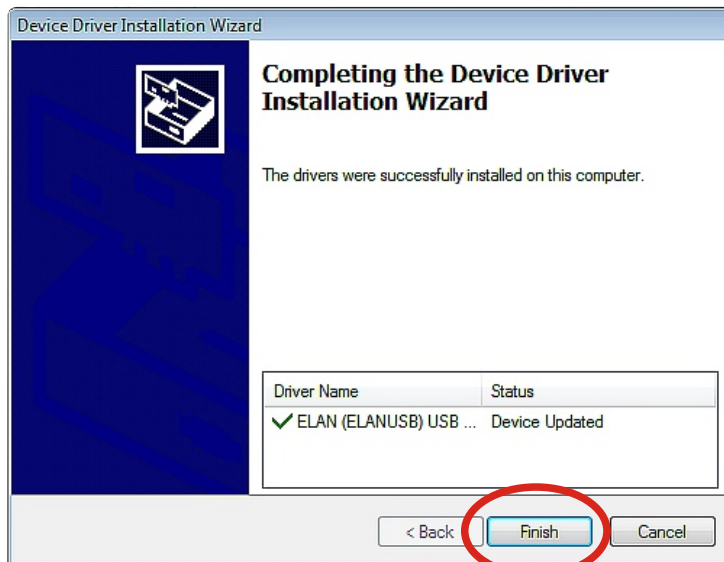
Step10 Click " Install this driver software anyway " to continue.



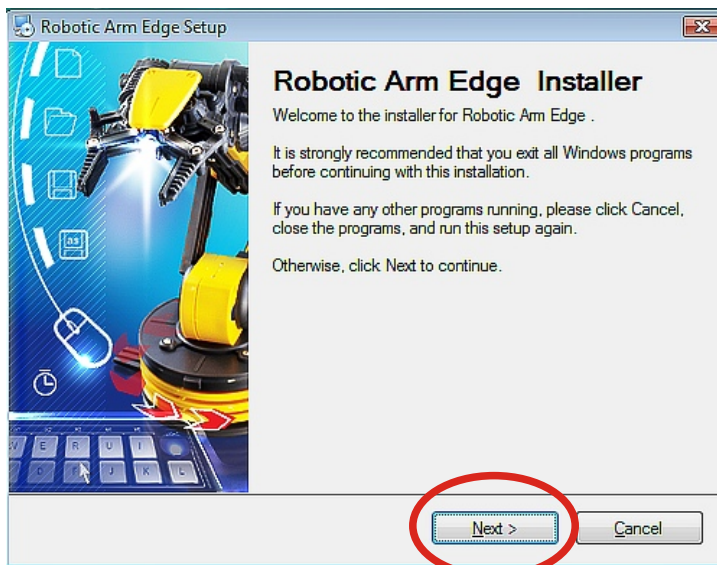
Step11 Click " Next " to continue.



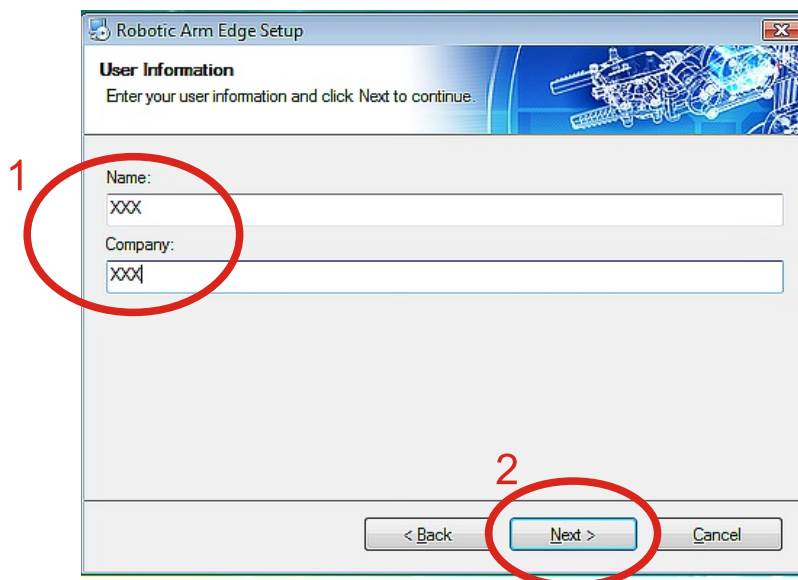
Step12 Click “ Finish ” to continue.



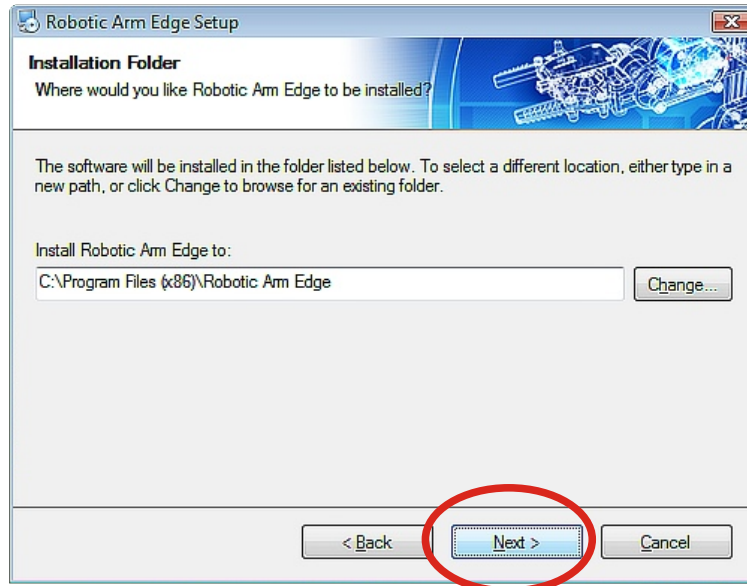
Step13 Click “ Next ” to continue.



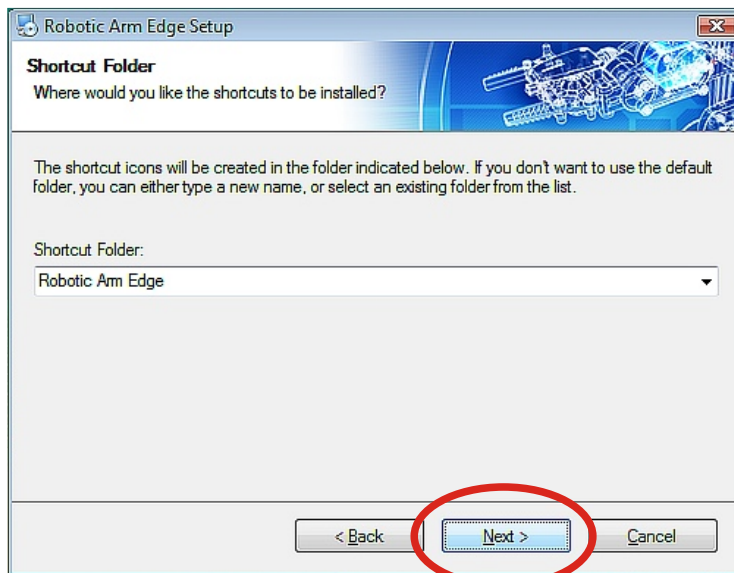
Step14 Fill in your name or company and click “Next” to continue.



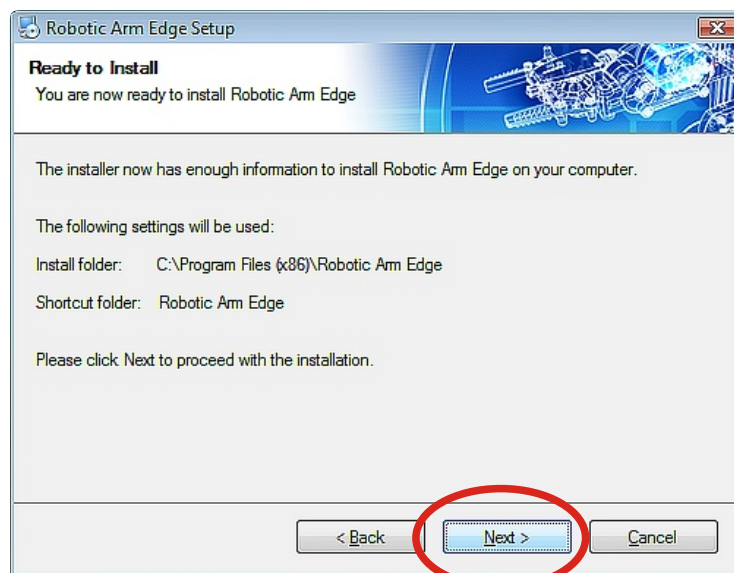
Step15 Click “ Next ” to continue.



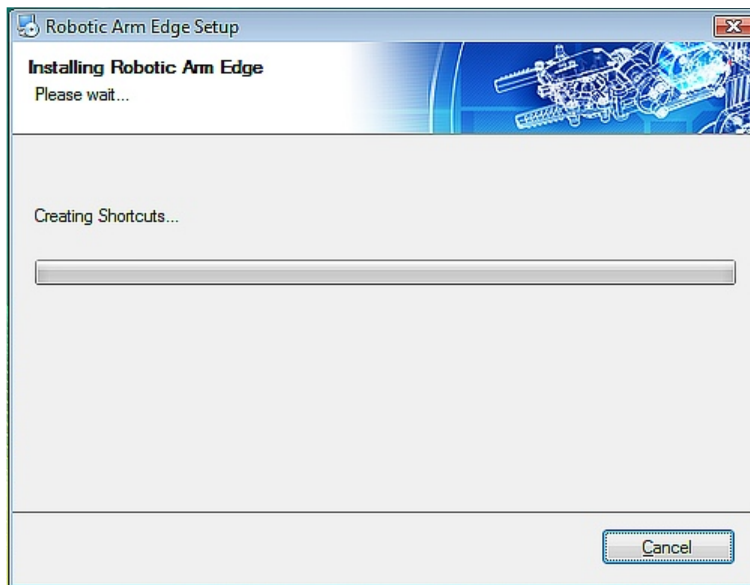
Step16 Click “ Next ” to continue.



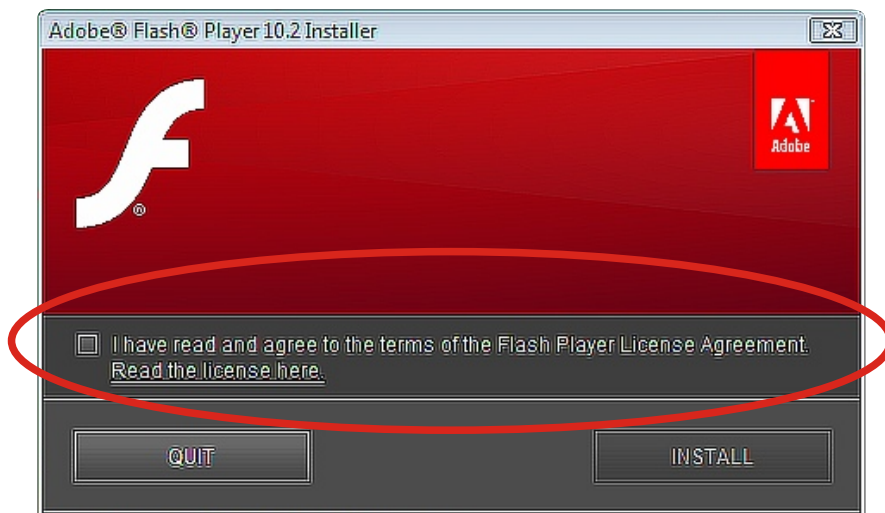
Step17 Click “ Next ” to continue.



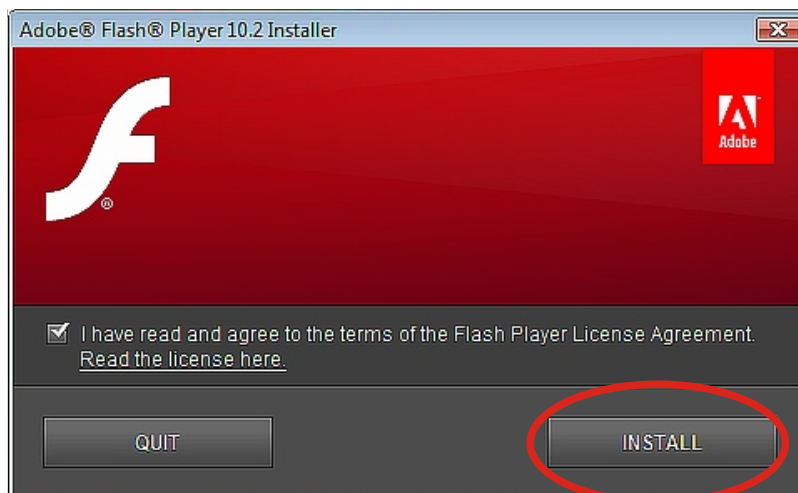
Step18 Wait.....



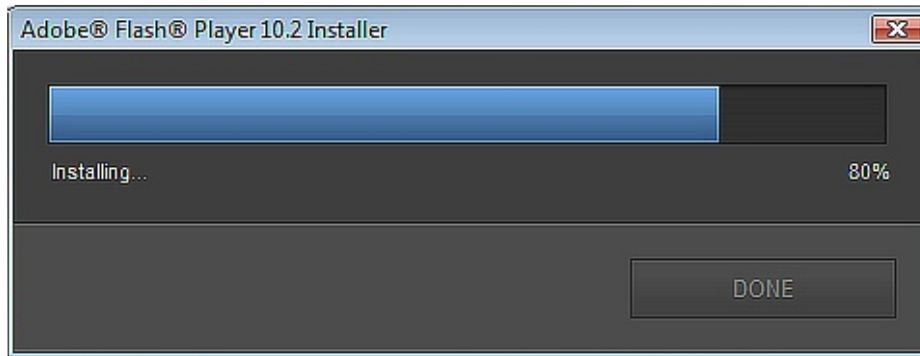
Step19 Check the box “ I have read and agree to the terms of ” to continue.



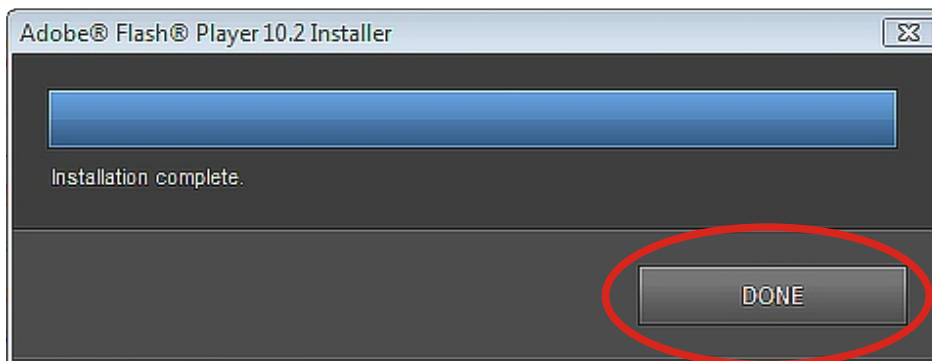
Step20 Click “ INSTALL ” to continue.



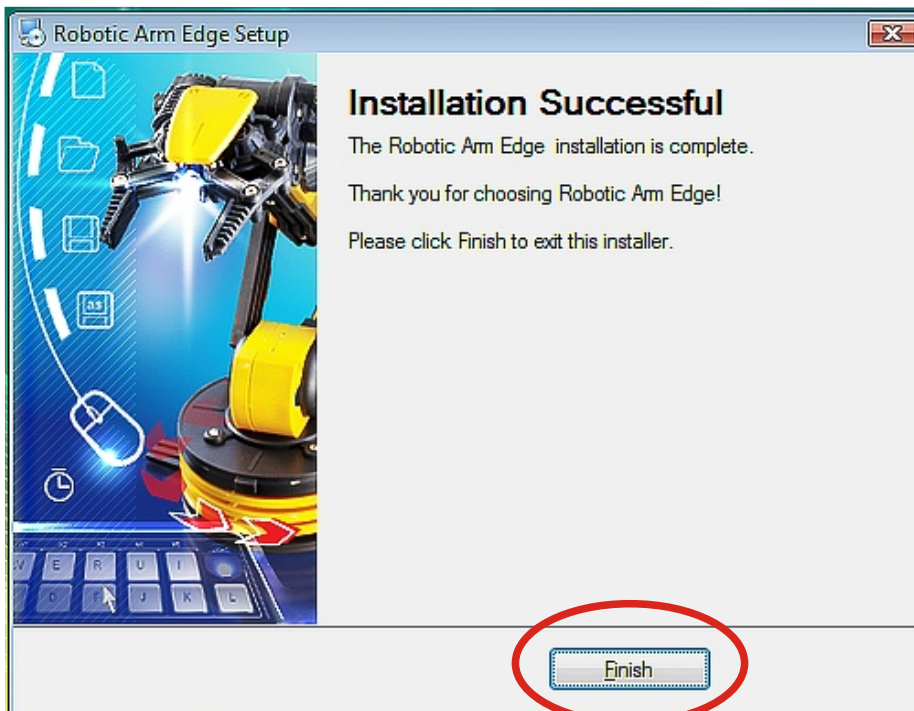
Step21 Wait.....



Step22 Click " DONE " to continue.



Step23 Finish setup.



3.SET UP (For Windows 7 64-bit version)

3-1.Hardware and system requirements

OS : Windows 7 (works only with 64-bit version)

CPU : Pentium3, 1.0GHz or higher

Memory : 256MB or higher

Hardware Disk Space : 100MB or more

Display : Super VGA (800x600) or higher

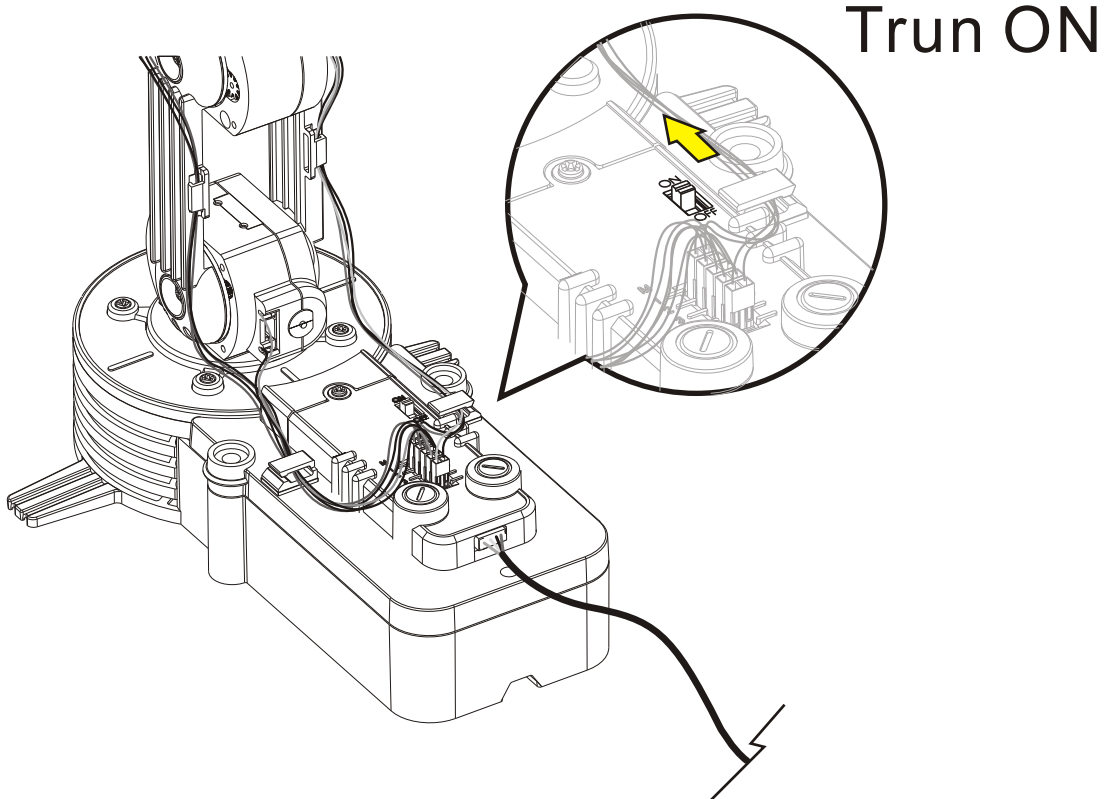
Color monitor with high color 16-bit or higher

3-2.Install USB Driver and MAIN PROGRAM

A.Insert the disk into your CD-ROM drive.

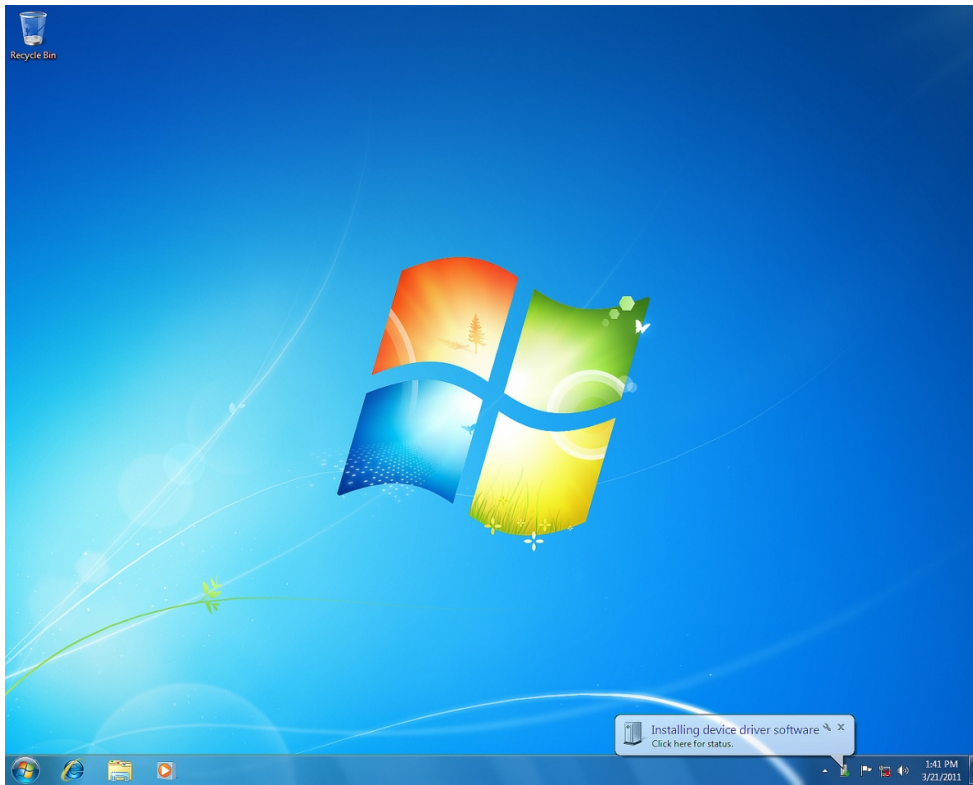
B.Connect Robotic Arm Edge and PC with the USB cable.

C.Turn ON the Robotic Arm Edge.

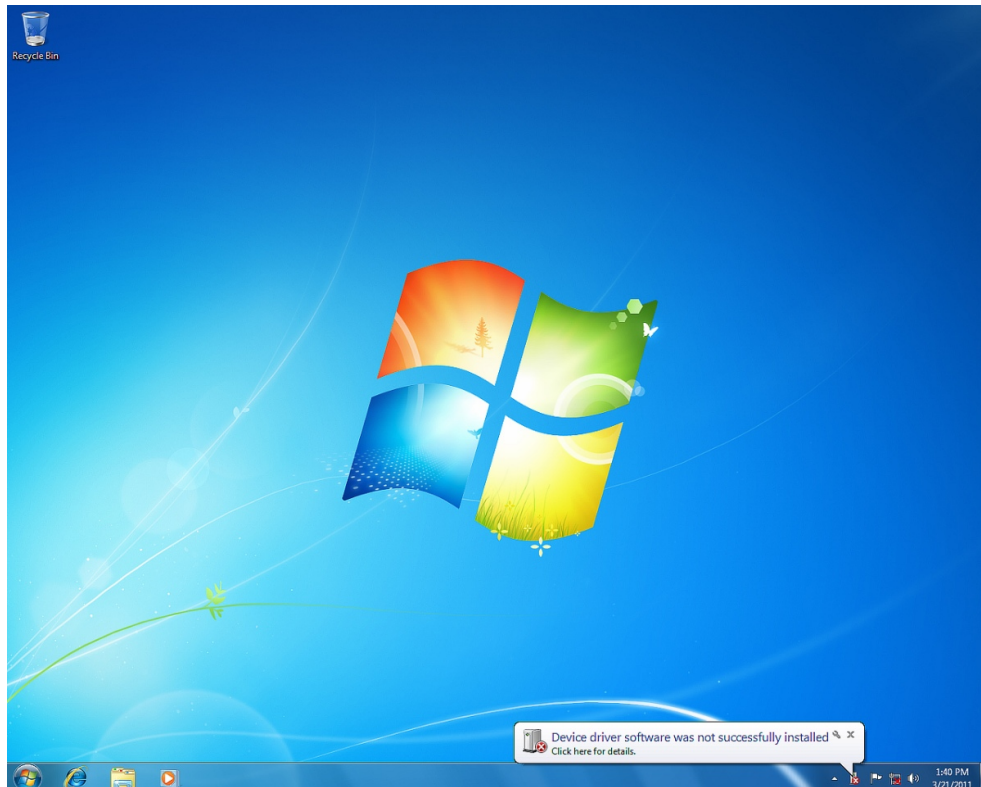


D. Install USB Driver.

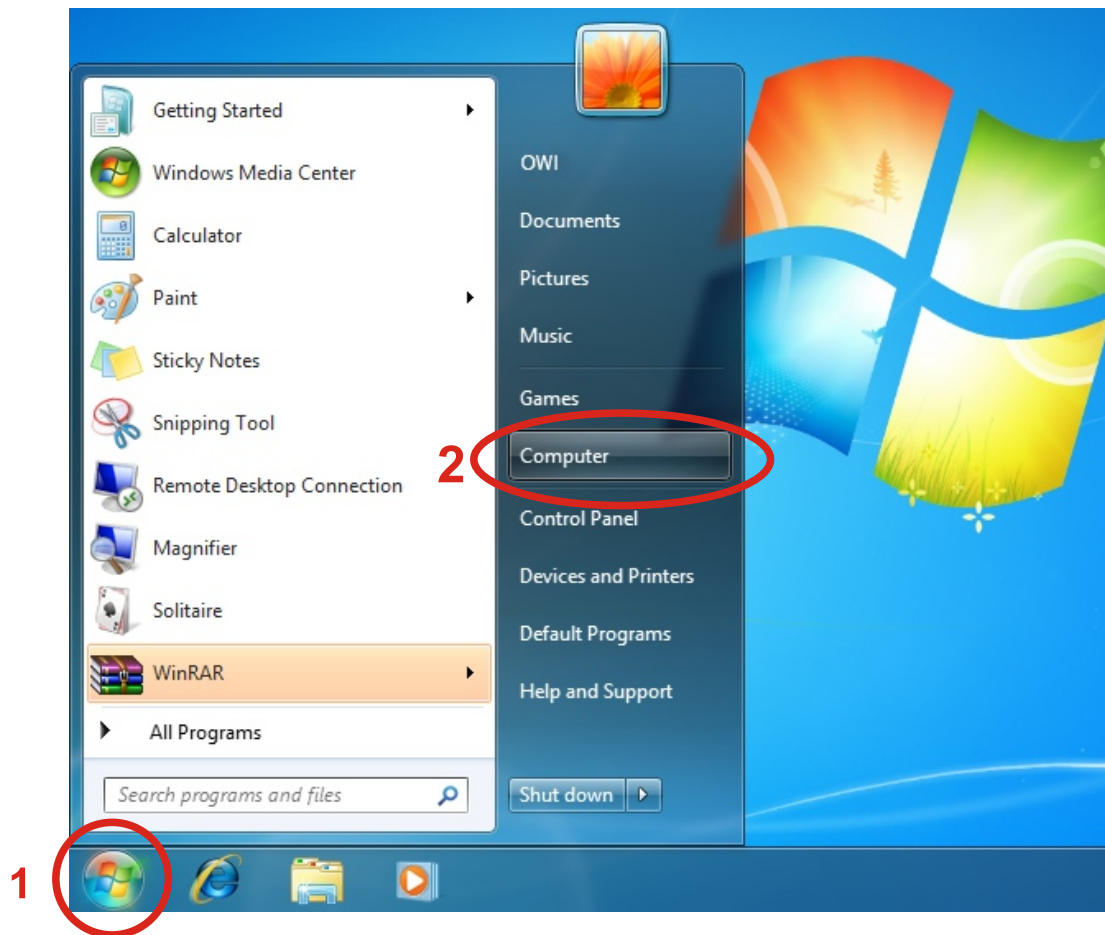
Step1 Wait.....



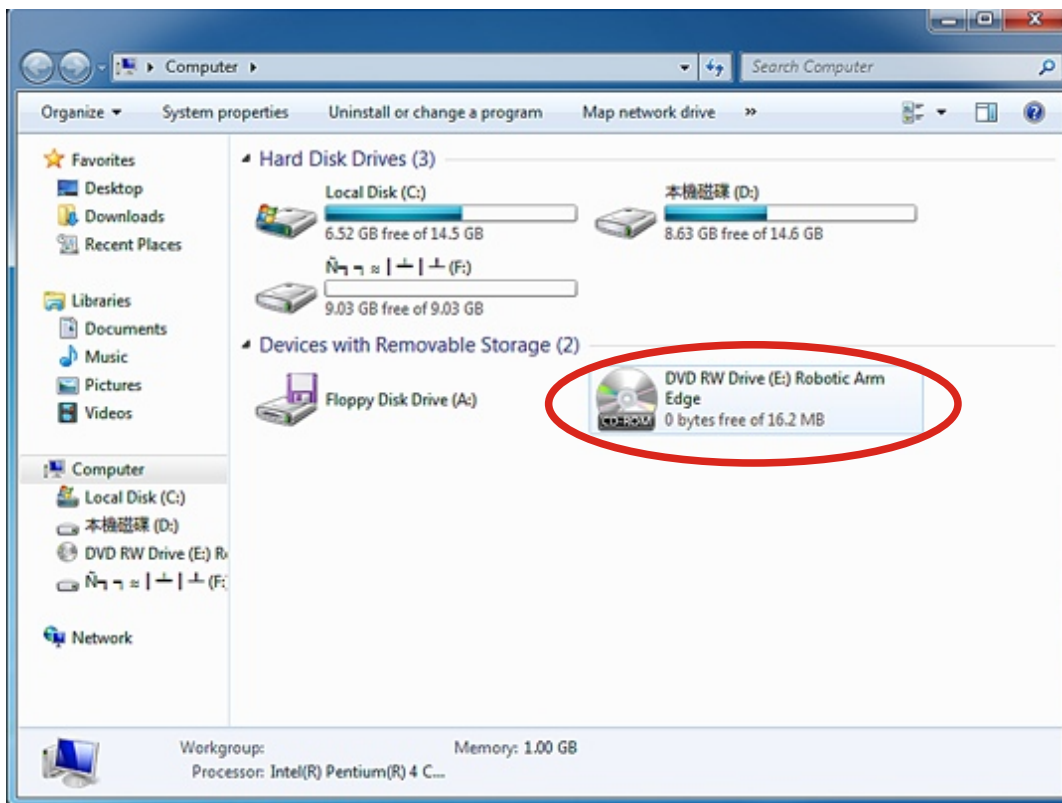
Step2 Wait.....



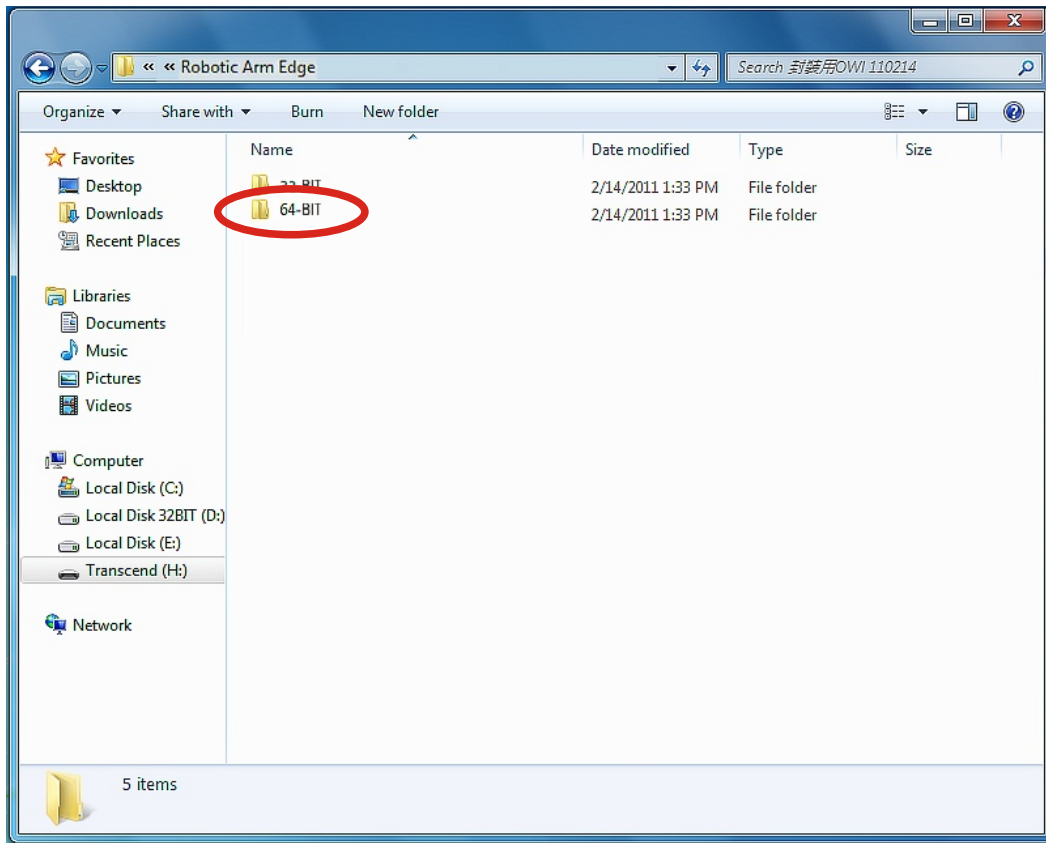
Step3 Go to "Computer" choice.



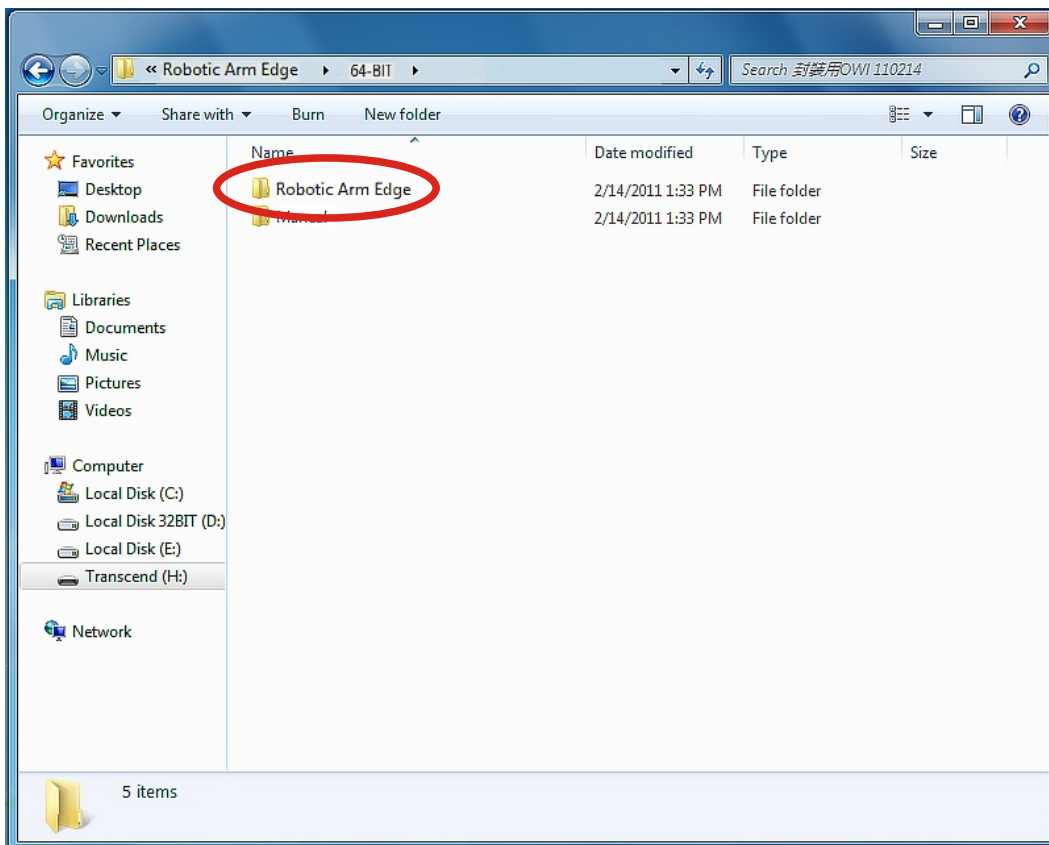
Step4 Click your CD-ROM icon.



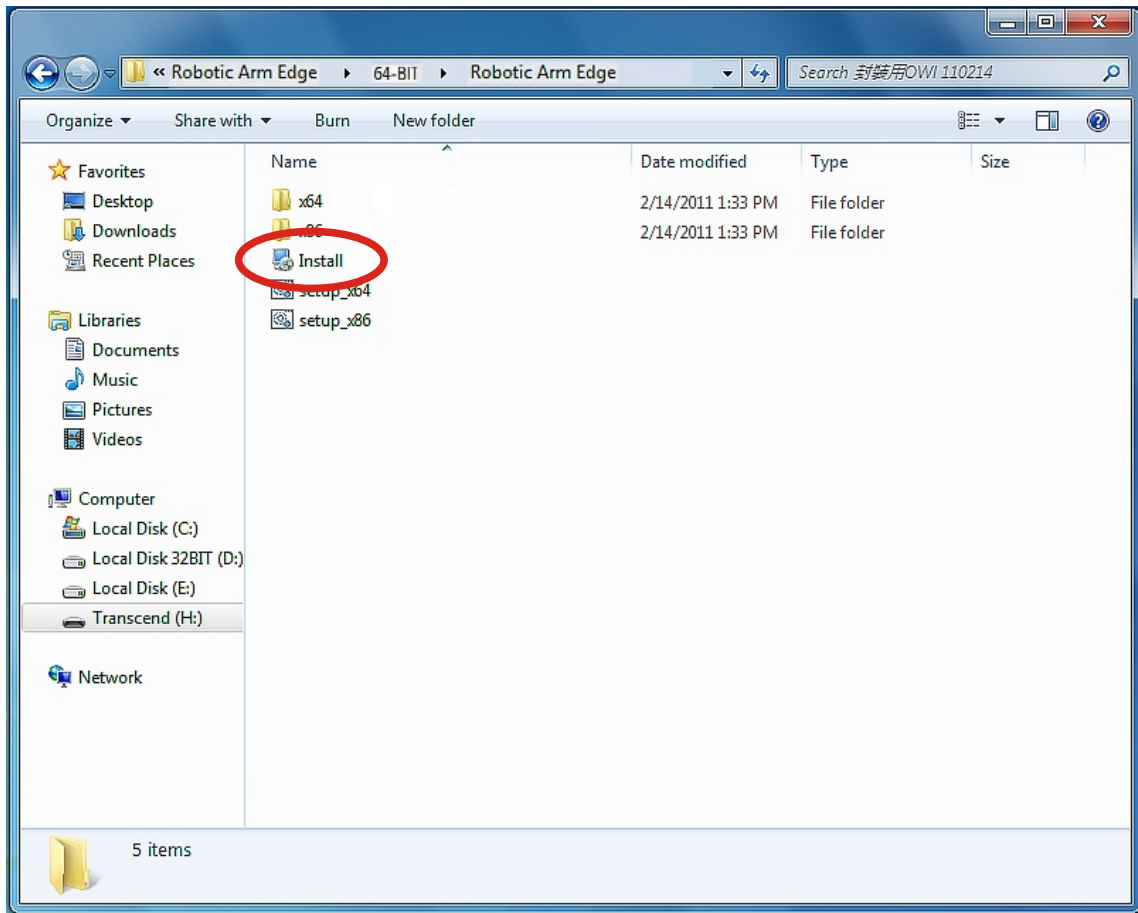
Step5 Choose "64-BIT" folder.



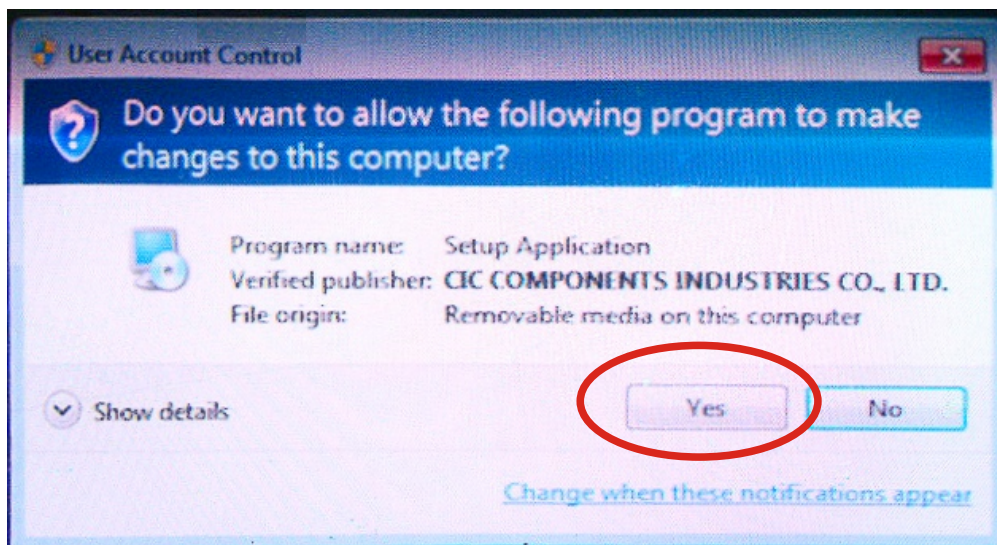
Step6 Choose "Robotic Arm Edge" .



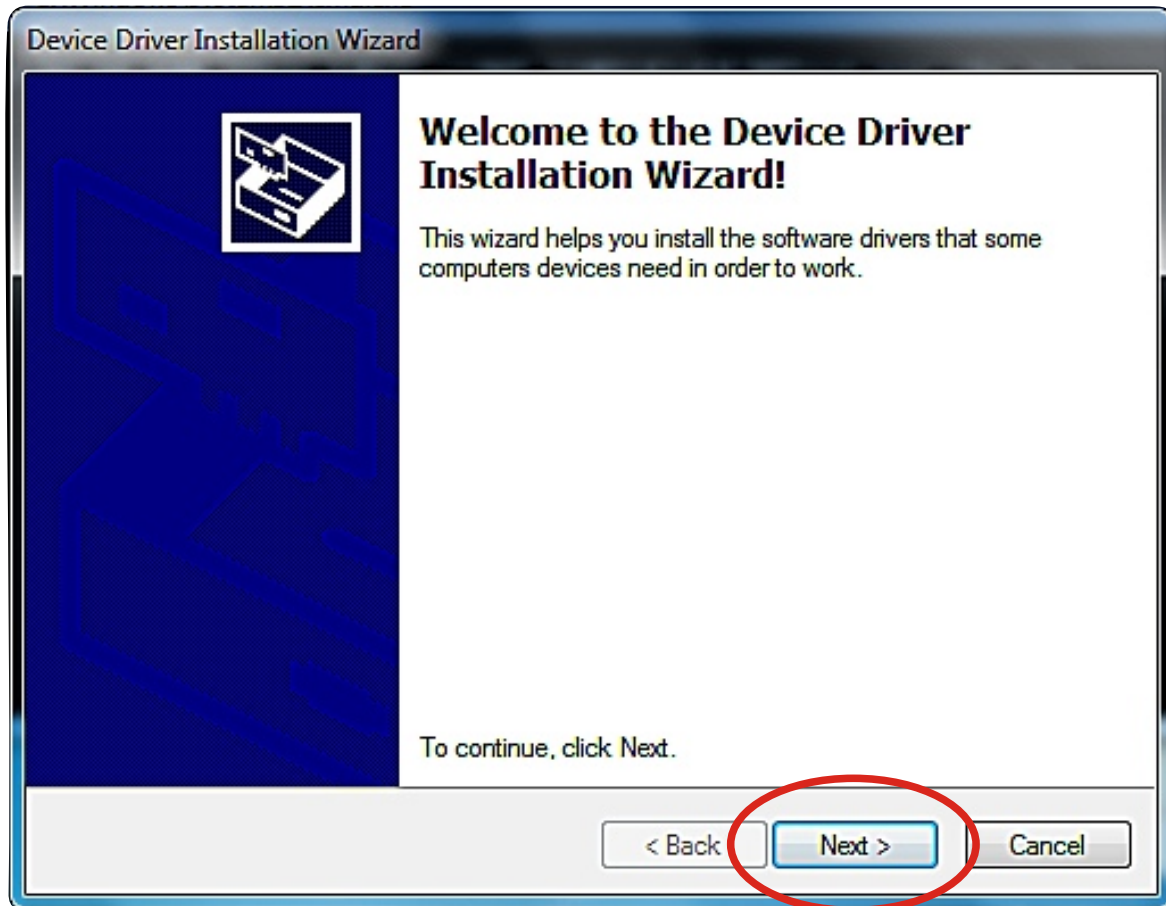
Step7 Click "Install" icon.



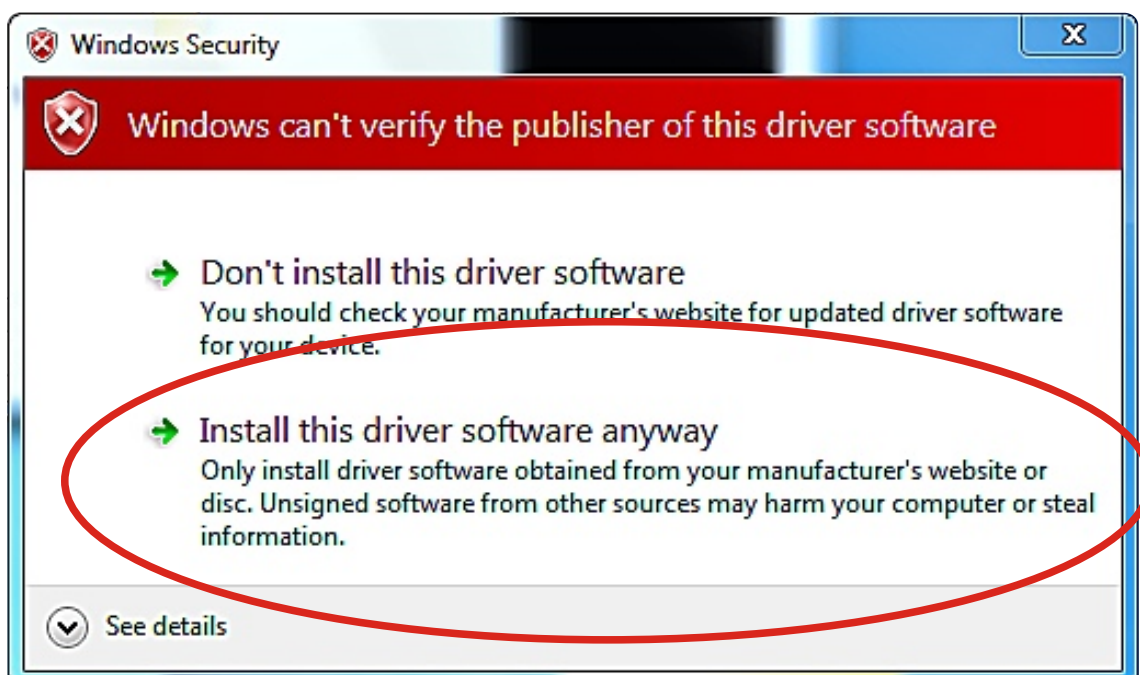
Step8 Click "YES" to continue.



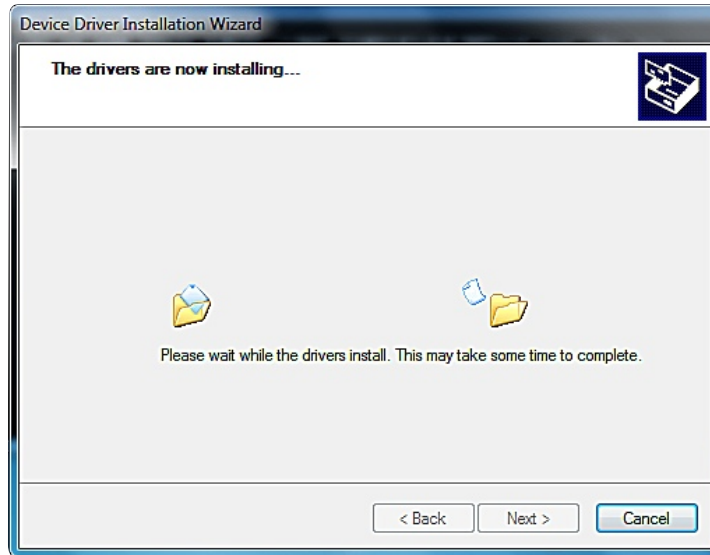
Step9 Click "Next" to continue.



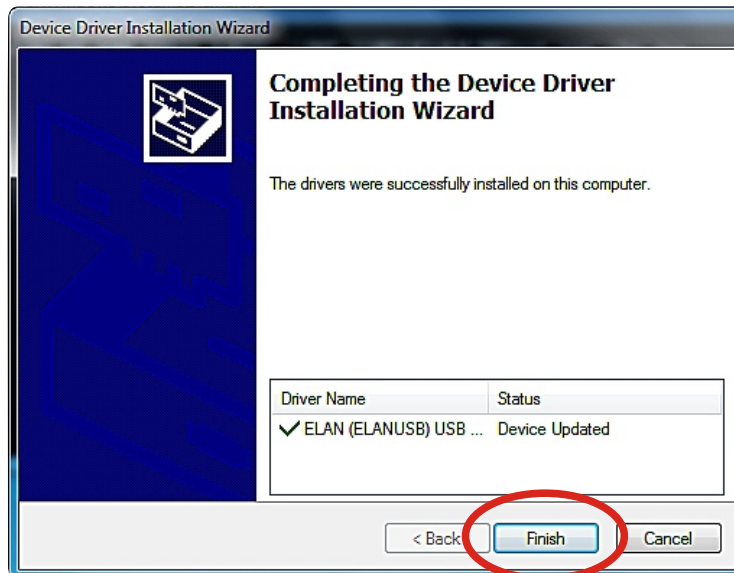
Step10 Click "Install this driver software anyway" to continue.



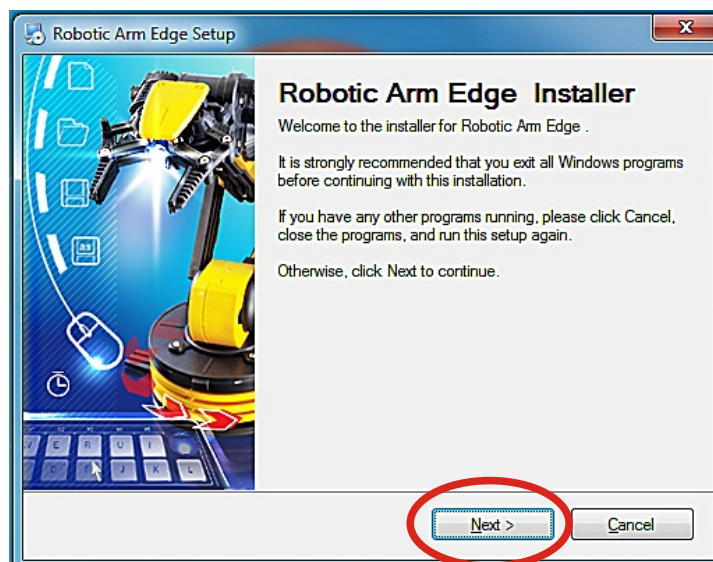
Step11 Wait.....



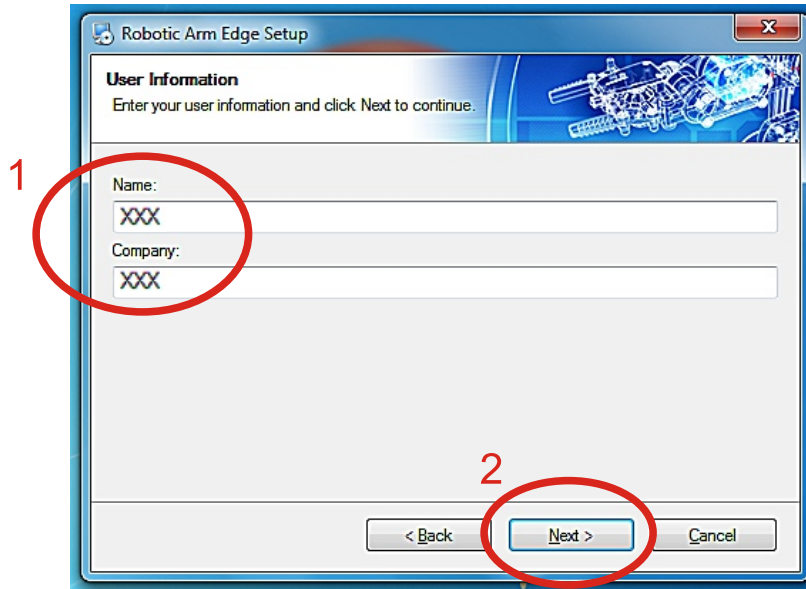
Step12 Click " Finish " to continue.



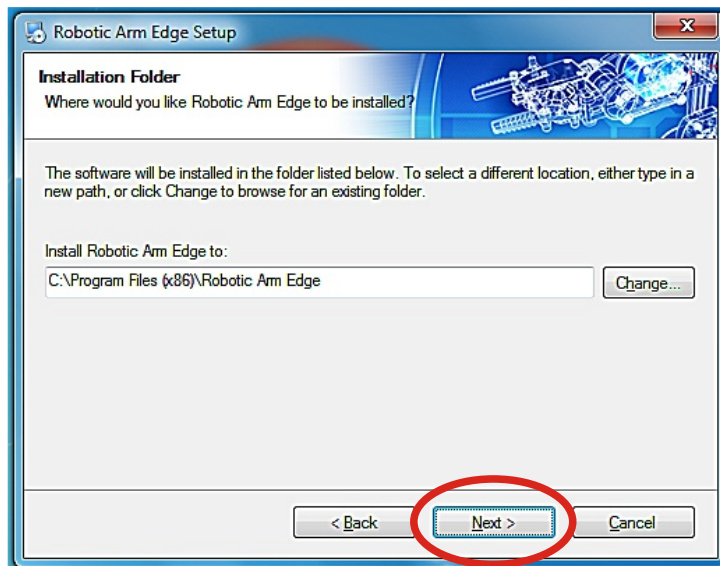
Step13 Click " Next " to continue.



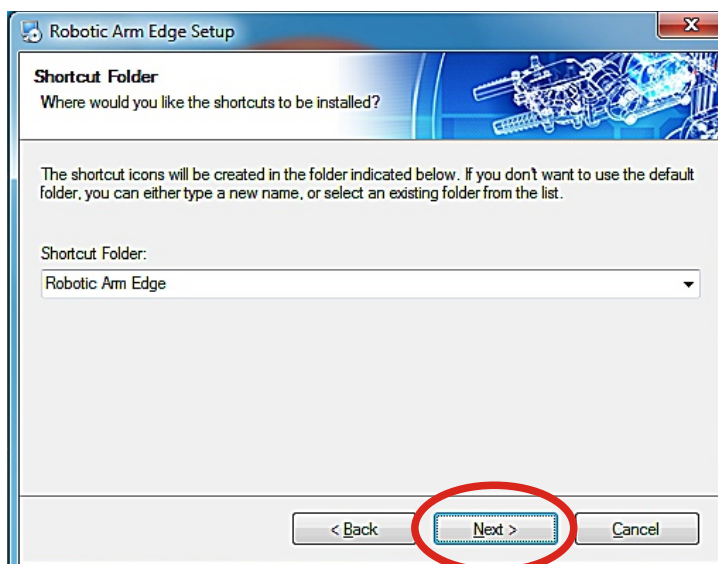
Step14 Fill in your name or company and click “Next” to continue.



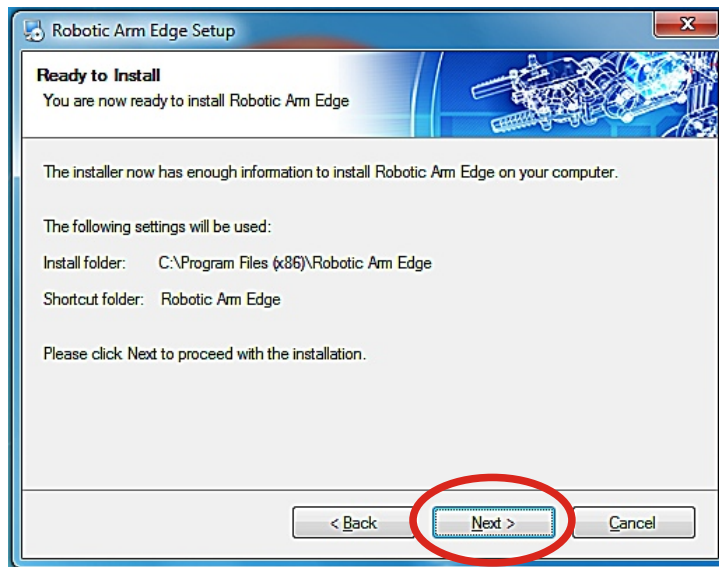
Step15 Click “ Next ” to continue.



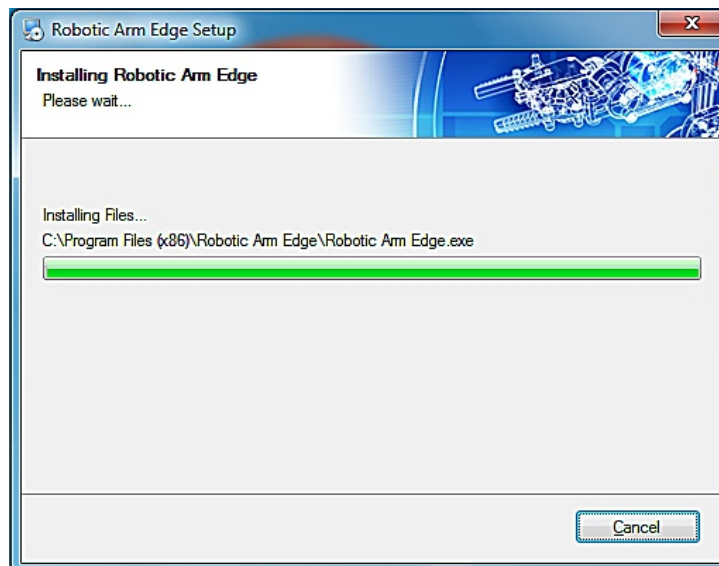
Step16 Click “ Next ” to continue.



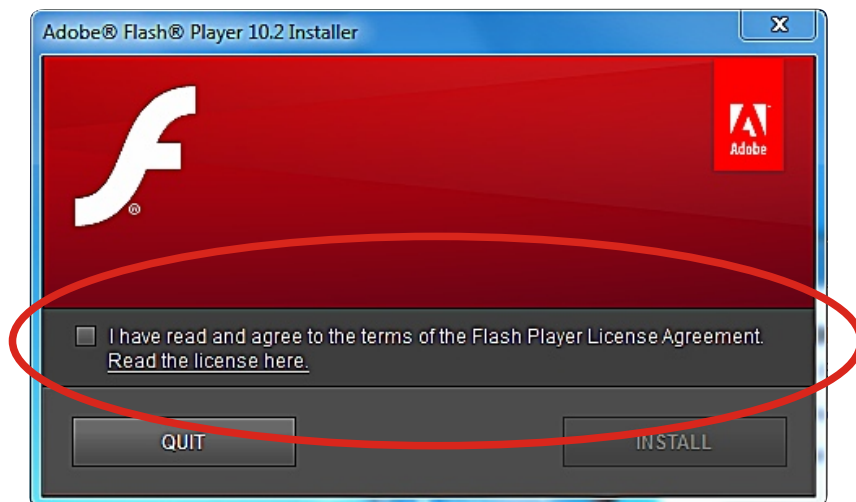
Step17 Click “ Next ” to continue.



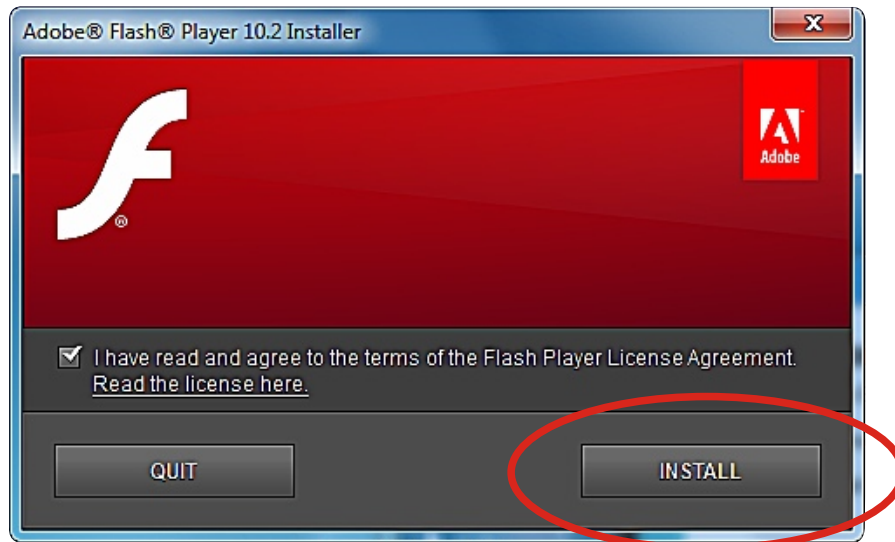
Step18 Wait.....



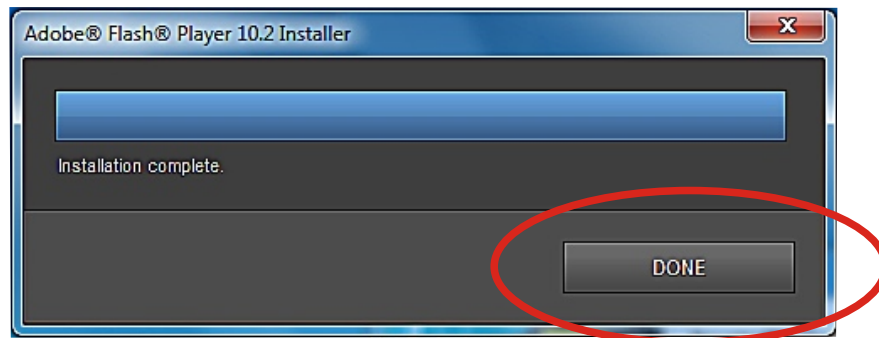
Step19 Check the box “ I have read and agree to the terms of ” to continue.



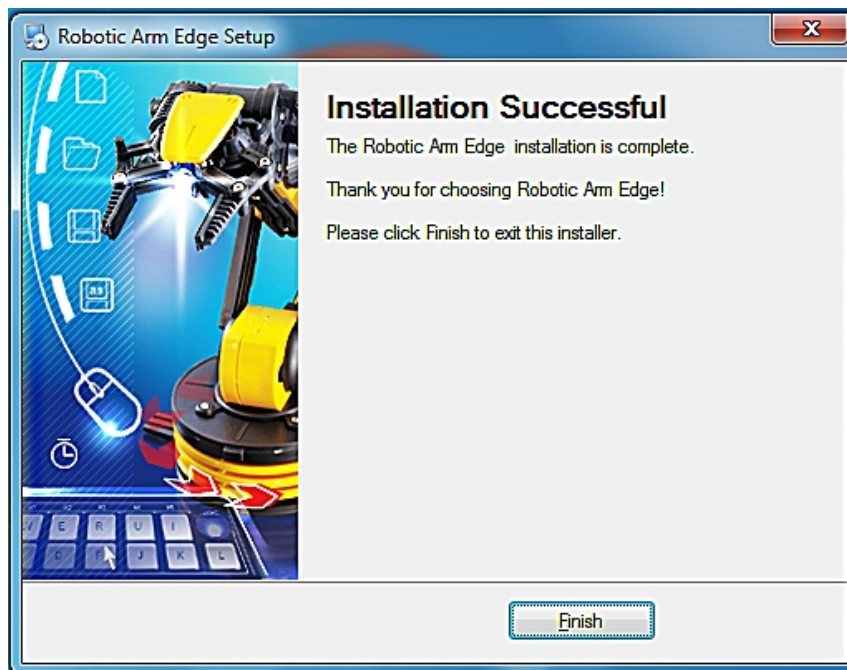
Step20 Click "INSTALL" to continue.



Step21 Click "Done" to continue.



Step22 Finish setup.



4.HOW TO PLAY

4-1.Start the program

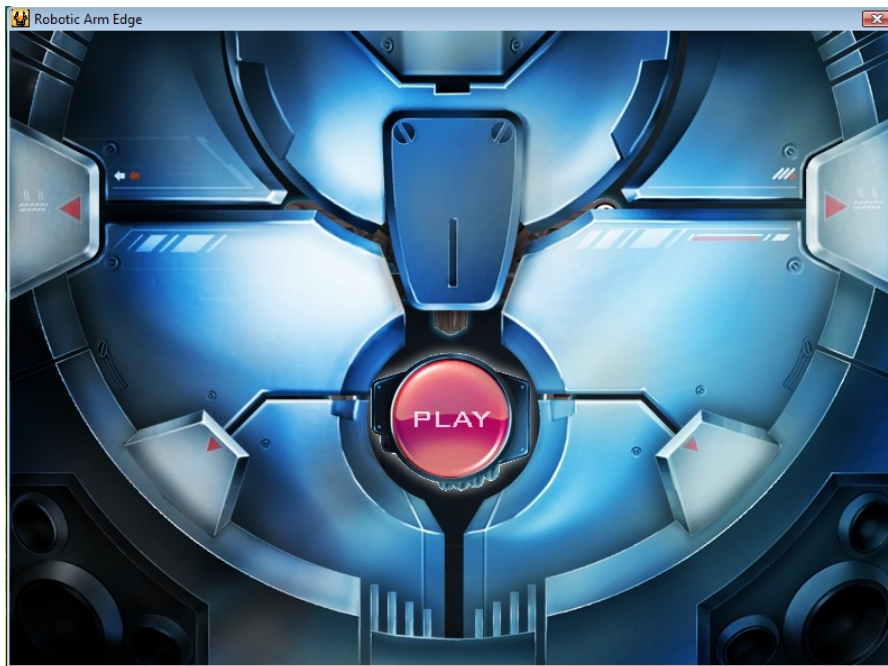
Click “Robot Arm Edge” icon on your desktop to start the program.



Robot Arm
Edge

4-2.Opening animation

Click “PLAY” to get into the program.



4-3.MENU

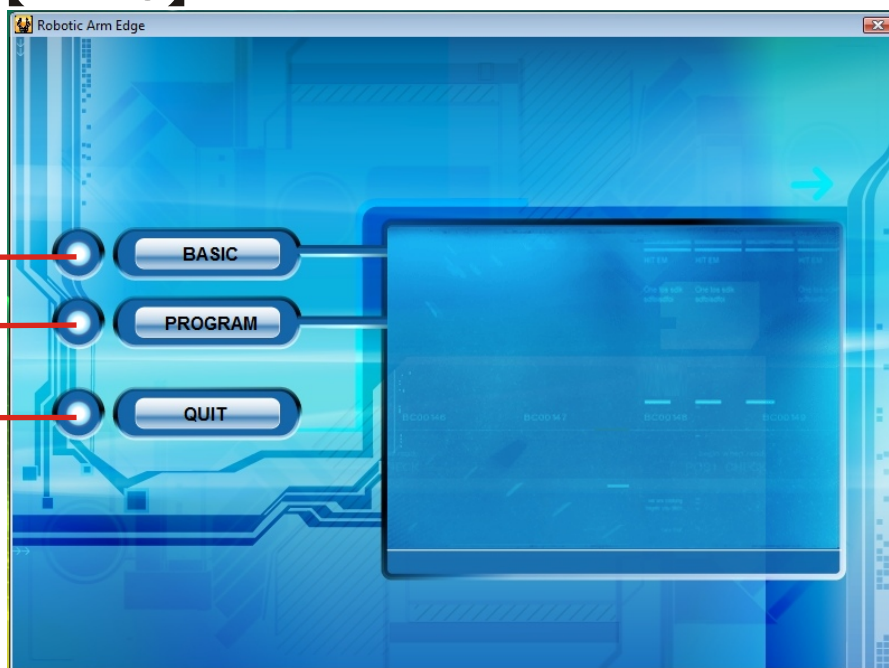
Choose a mode to play.

【MENU】

BASIC mode

PROGRAM mode

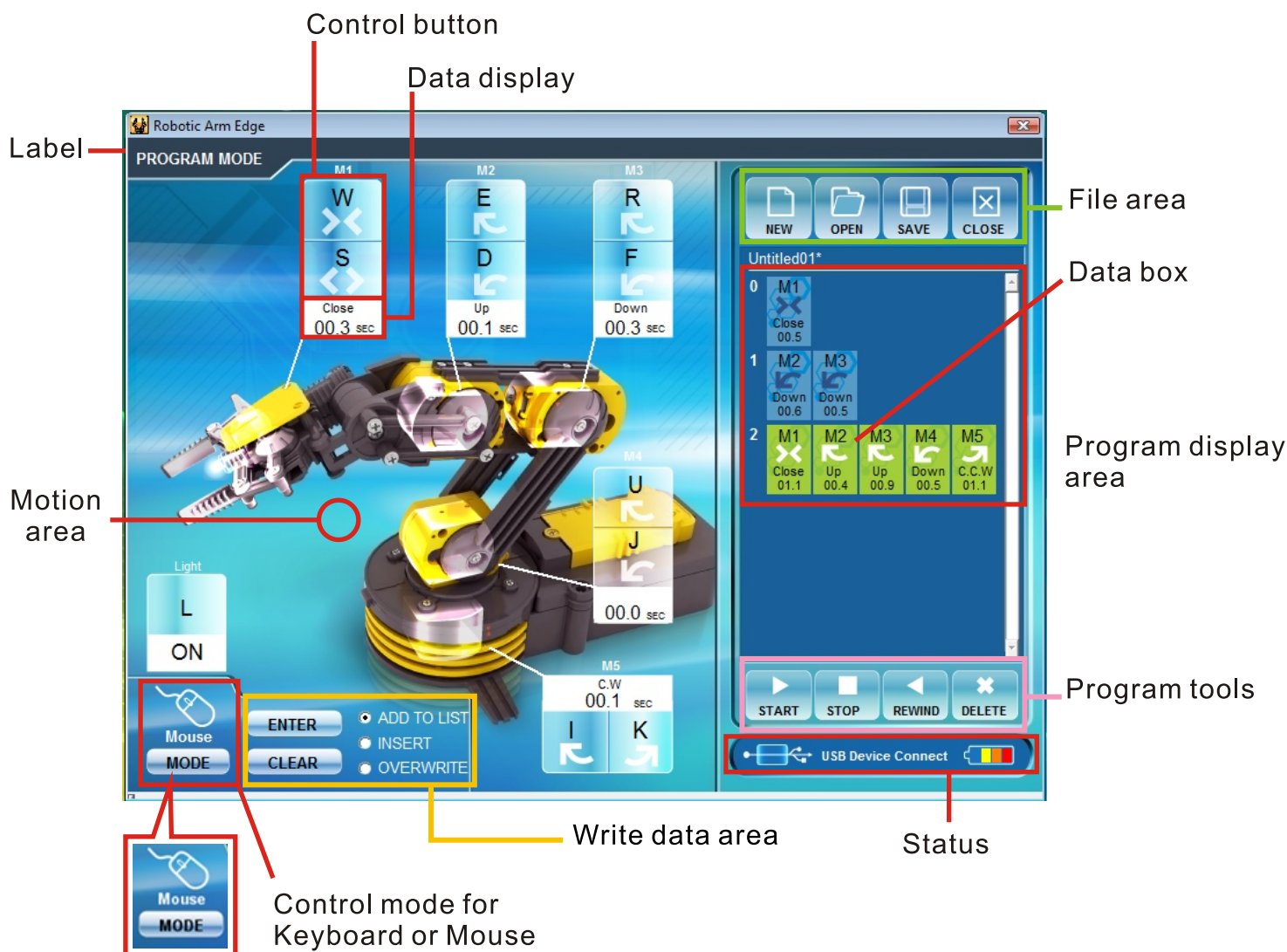
Quit



4-4.BASIC MODE



4-5.PROGRAM MODE



Write data area

- ENTER** : Fix the total operation time in the program display area.
- CLEAR** : The timer is reset to “0”.

File area

- NEW** : Create a new file.
- OPEN** : Open a saved file.
- SAVE** : Save a created program.
- CLOSE** : The display goes back to Menu

Program tools

- START** : The program in the program display area is executed.
- STOP** : The program under execution is stopped.
- REWIND** : Reversed for the time specified in the program display area and Robotic Arm Edge goes back to the original position.
- DELETE** : Selected command in the program display area is deleted.

4-6.PROGRAM MODE OPERATION GUIDE

Step1 Choose "PROGRAM".



Step2 Begin to program your Robotic Arm Edge. Choose any of the motor gear in Motion area. For example, choose "M1" gear and use "Control button" to change the time you want the Robotic Arm Edge to be moved. The time is shown at the "Data display" area.



Step3 Press "ENTER" to write the data in "Data box".

Data box

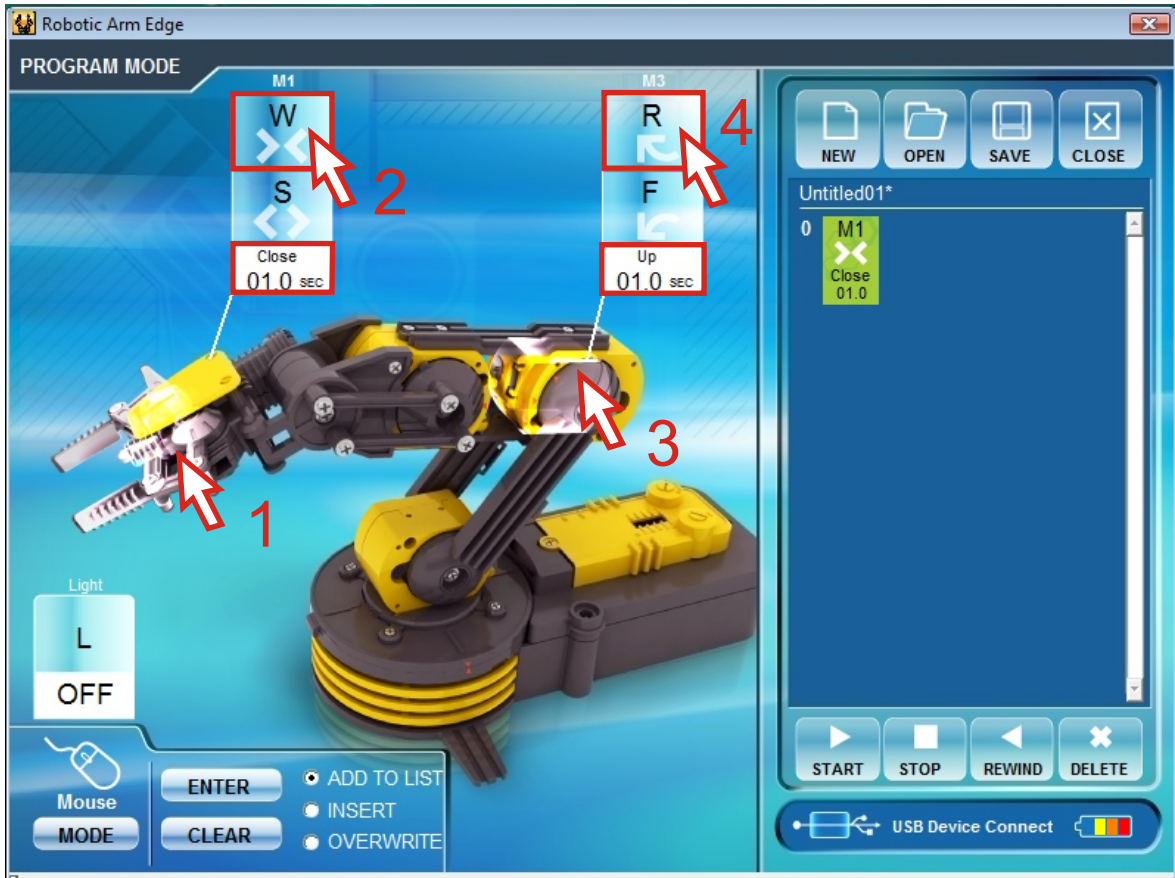


Step4 The data in "Data box".

Data box



Step5 Keep to choose another motor gear. Choose “M1” and “M3” gear and change the data.



Step6 Press “ENTER” . The data is written into the “Data box” at the same time.

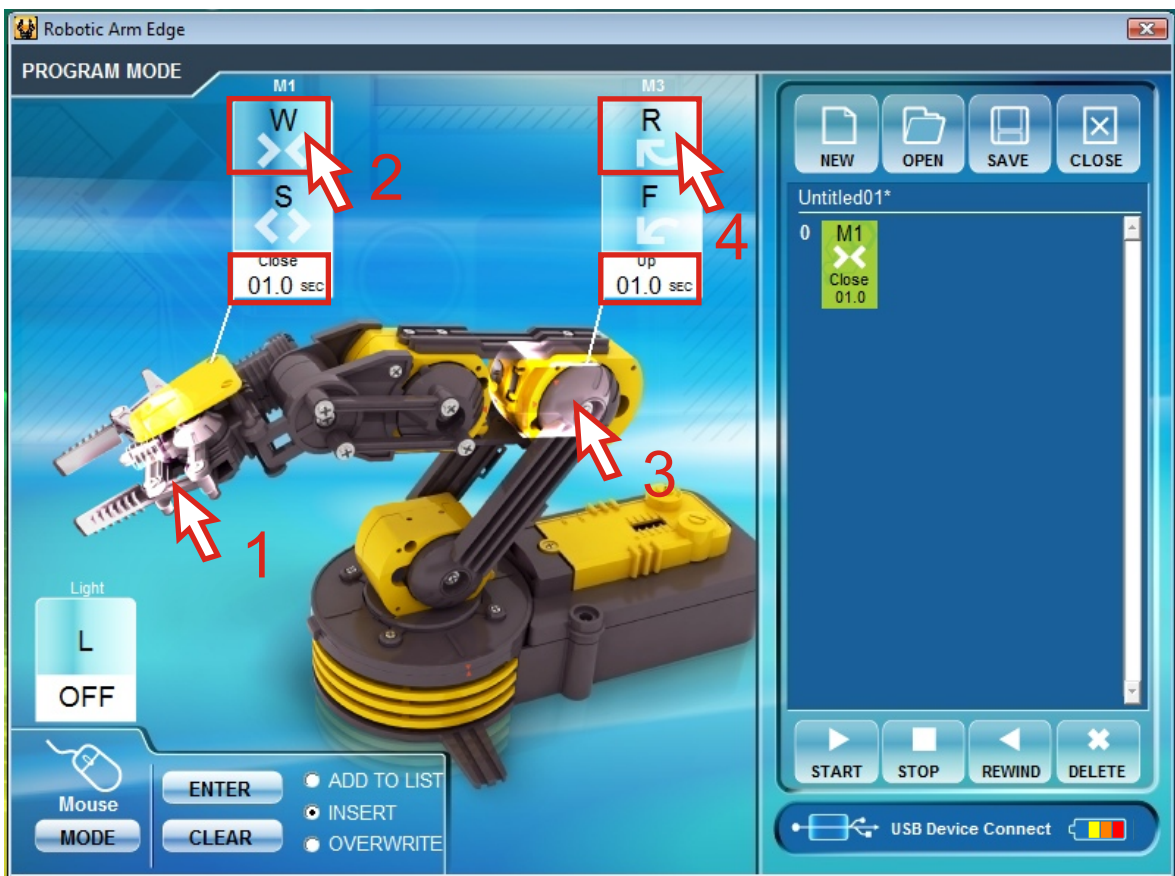


Step7 IF you want to insert a movement before the data in the Data Box.
Click "INSERT" at "Write data area".



Write data area

Step8 Change the time with the motors you want to change.



Step9 Press “ENTER” . The data is inserted into the “Data box” at the same time.

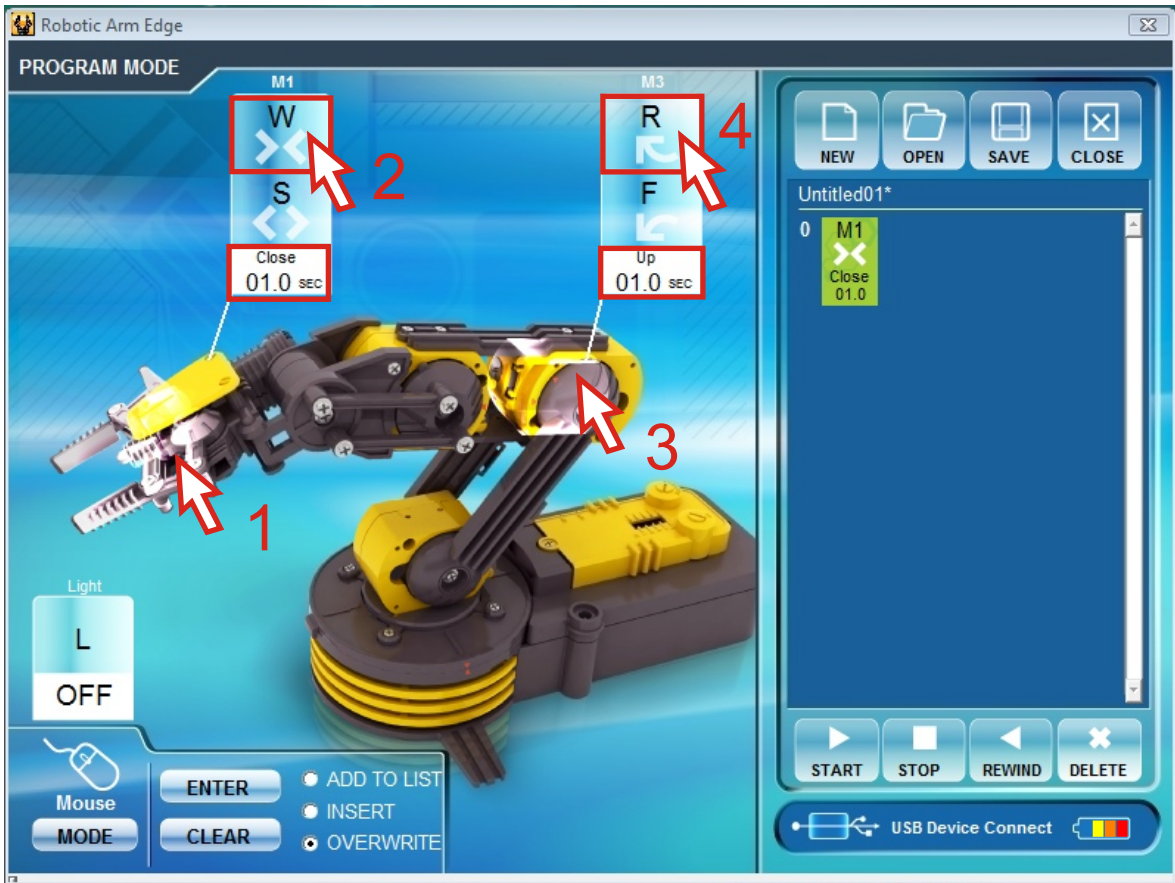


Step10 To overwrite the data. Click “OVERWRITE” at “Write data area”.



Write data area

Step11 Change the time with the motors you want to change.



Step12 Press "ENTER". The data is changed at the same time. And the choice of "OVERWRITE" in "Write data area" is changed back to "ADD TO LIST" automatically.



Step13 To see the movement you have been set . Press “START” in “Program tools” area.

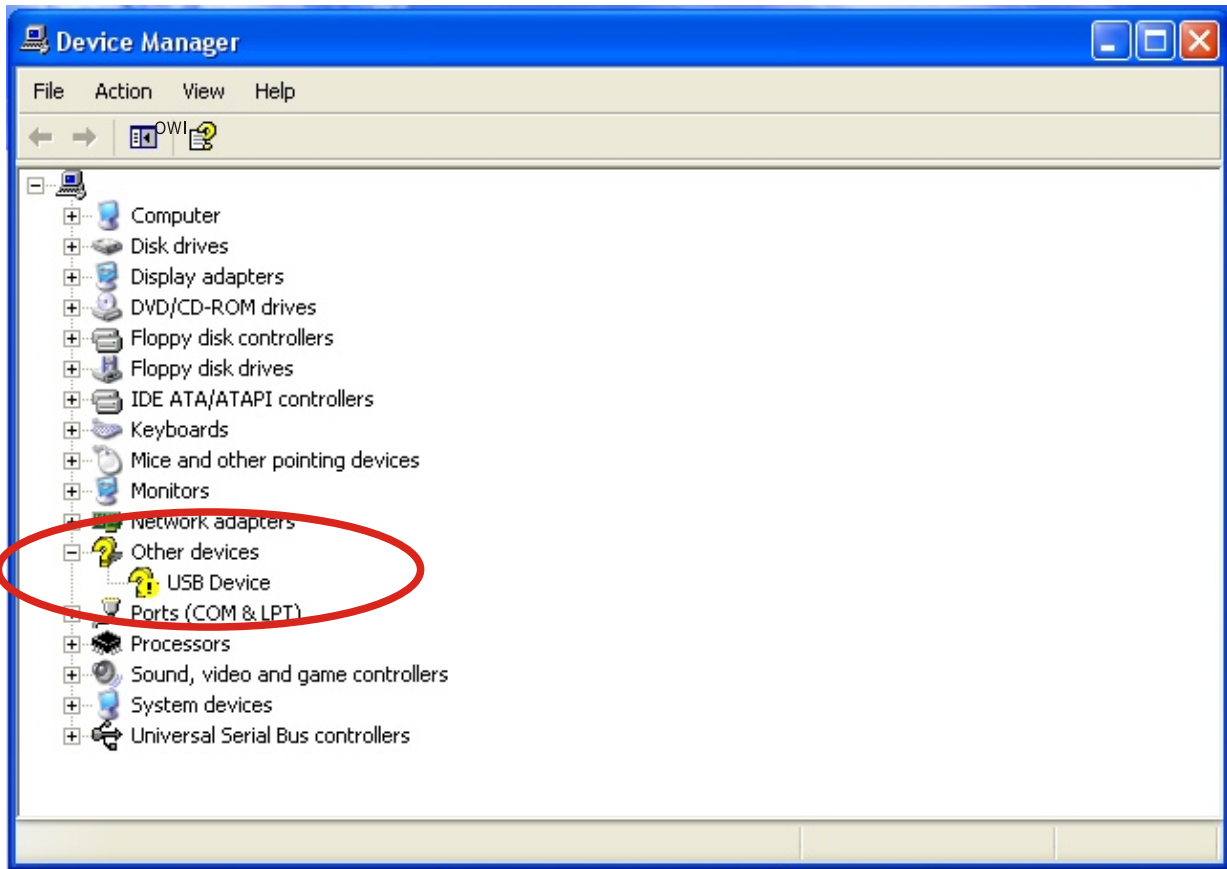


Step14 The movement data will show on screen at the same time while the Robotic Arm Edge is moving.



5.TROUBLESHOOTING

5-1 If there is no " Other devices" shown on your computer. Please reconnect your Robotic Arm Edge with computer or change other USB port of your computer or re-install the softwar.



5-2 If the gearbox dose not work smoothly. Please Check motor wire connection.