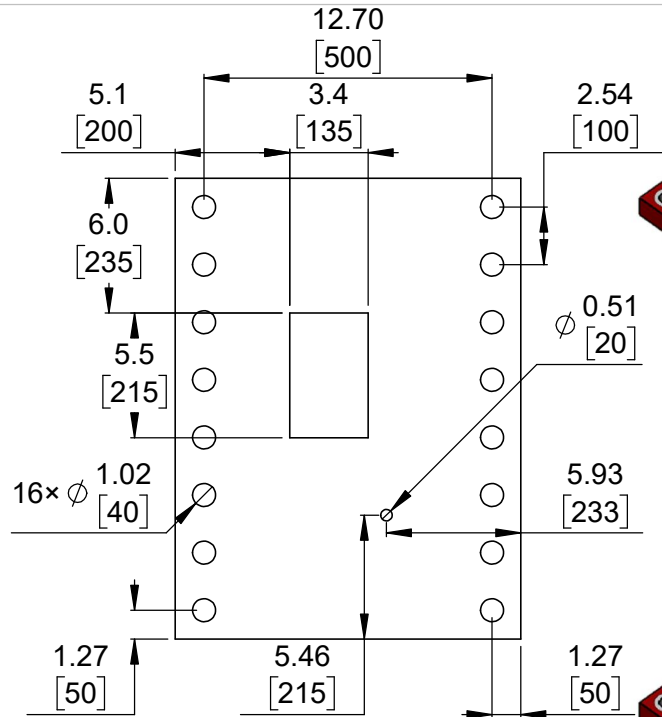
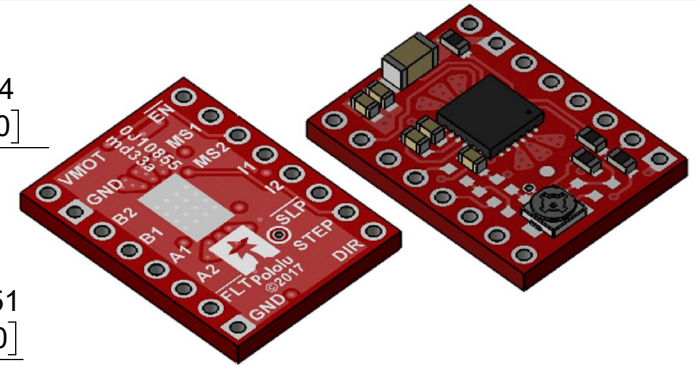


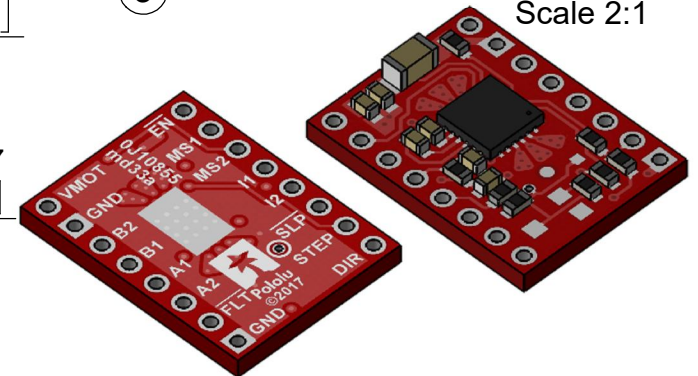
① Board dimensions (top view)
Scale 3:1



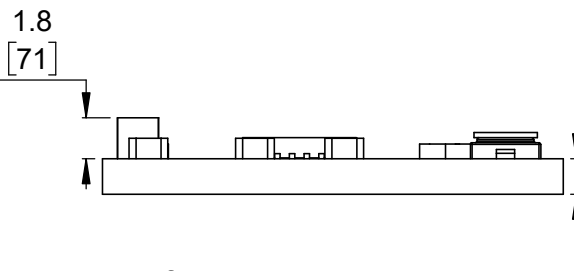
② Connector callouts (bottom view)
Scale 3:1



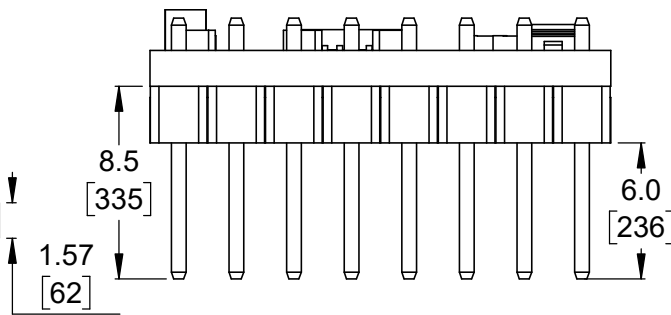
③ Isometric view (potentiometer current control)
Scale 2:1



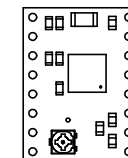
④ Isometric view (digital current control)
Scale 2:1



⑤ Profile
Scale 3:1




⑥ Profile with headers
Scale 3:1



⑦ Actual size
Scale 1:1

1. To get the specified scale, select 100% in print settings.
2. Drill location tolerance: ± 0.1 [± 5].
3. Board edge tolerance: ± 0.3 [± 10].

<https://www.pololu.com/product/2966>

Name: MP6500 Stepper Motor Driver Carrier		Item number: 2966-2969	
Drawing date: 10 January 2018	Dev code: md33a	 © 2018 Pololu Corporation	
Units: mm [mil]	Material: mixed		