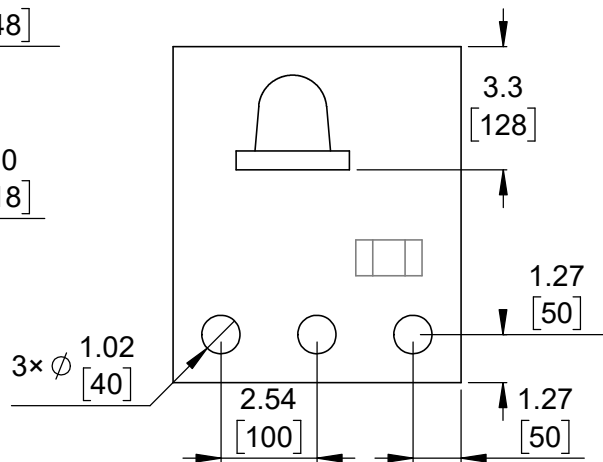
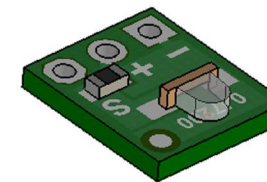
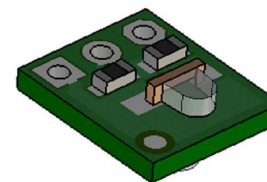


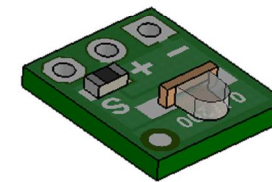
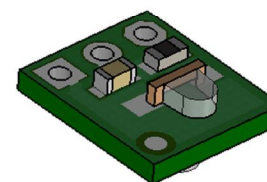
1 Board dimensions (emitter side)  
Scale 5:1



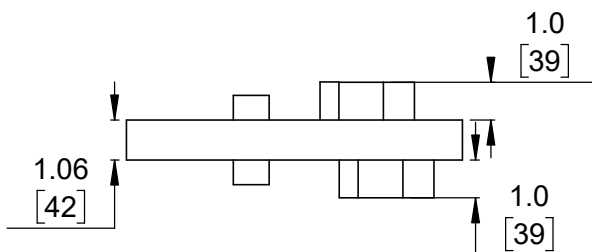
2 Connector callouts (detector side)  
Scale 5:1



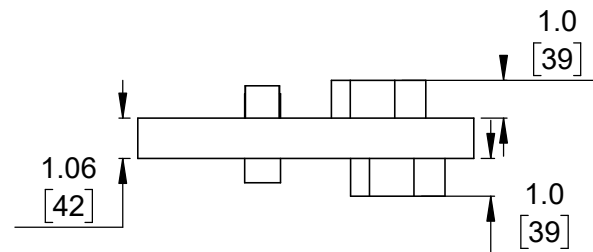
3 Isometric view (QTR-L-1A)  
Scale 3:1



4 Isometric view (QTR-L-1RC)  
Scale 3:1



5 Profile (QTR-L-1A)  
Scale 5:1




6 Profile (QTR-L-1RC)  
Scale 5:1



7 Actual size  
Scale 1:1

- To get the specified scale, select 100% in print settings.
- Drill location tolerance:  $\pm 0.1$  [ $\pm 5$ ].
- Board edge tolerance:  $\pm 0.3$  [ $\pm 10$ ].

<https://www.pololu.com/product/2454>

Name: QTR-L-1x Reflectance Sensor		Item number: 2454, 2455
Drawing date: 19 June 2017	Dev code: irs06a	 <b>Pololu</b> Robotics & Electronics © 2017 Pololu Corporation
Units: mm [mil]	Material: mixed	