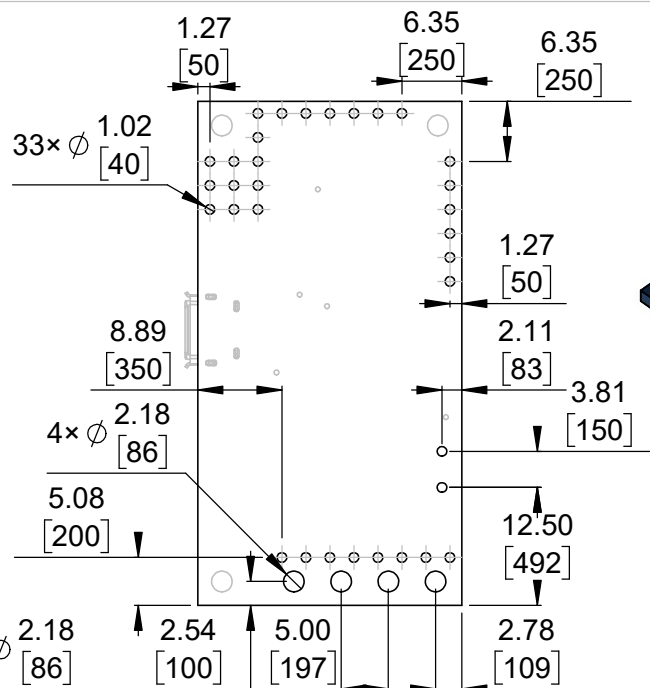
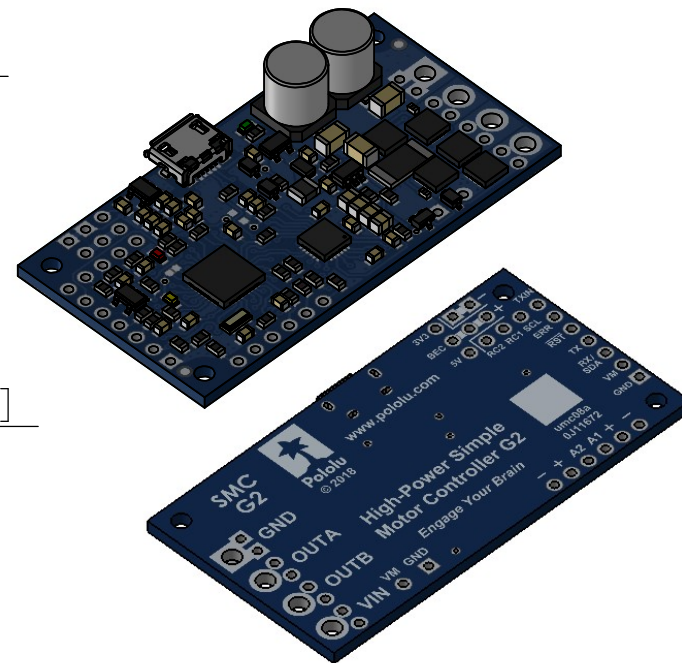


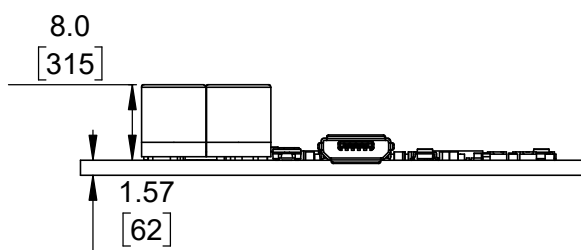
① Board dimensions (top view)
Scale 5:4



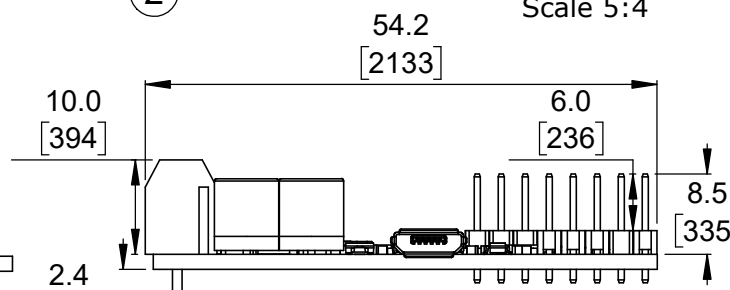
② Connector callouts (bottom view)
Scale 5:4



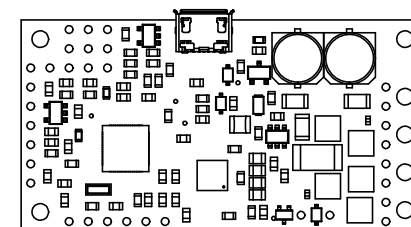
③ Isometric view
Scale 5:4



④ Profile
Scale 5:4




⑤ Profile (with through-hole connectors)
Scale 5:4



⑥ Actual size
Scale 1:1

- ① Intended for #2 and M2 screws.
- ② Grid lines indicate 2.54 mm [100 mil] spacing.
- ③ To get the specified scale, select 100% in print settings.
- ④ Drill location tolerance: ± 0.1 [± 5].
- ⑤ Board edge tolerance: ± 0.3 [± 10].

<https://www.pololu.com/product/1362>

Name: Pololu High-Power Simple Motor Controller G2 18v15 or 24v12		Item number: 1362 - 1365
Drawing date: 02 November 2018	Dev code: umc08a	 © 2018 Pololu Corporation
Units: mm [mil]	Material: mixed	