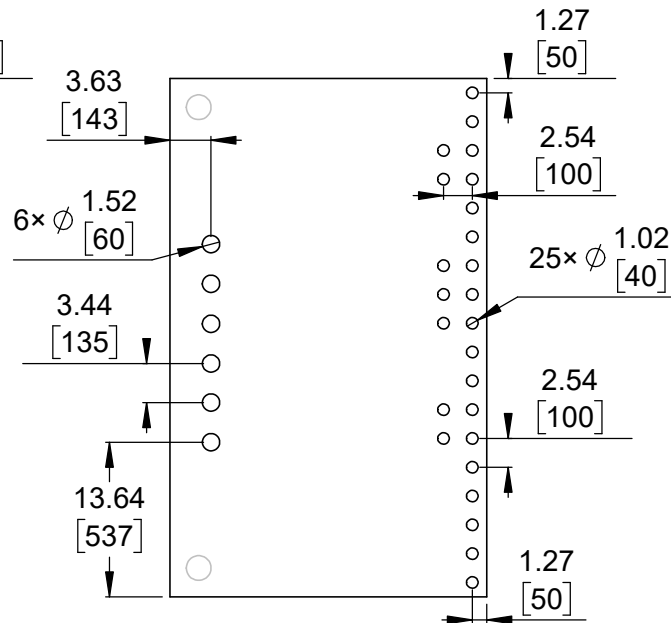
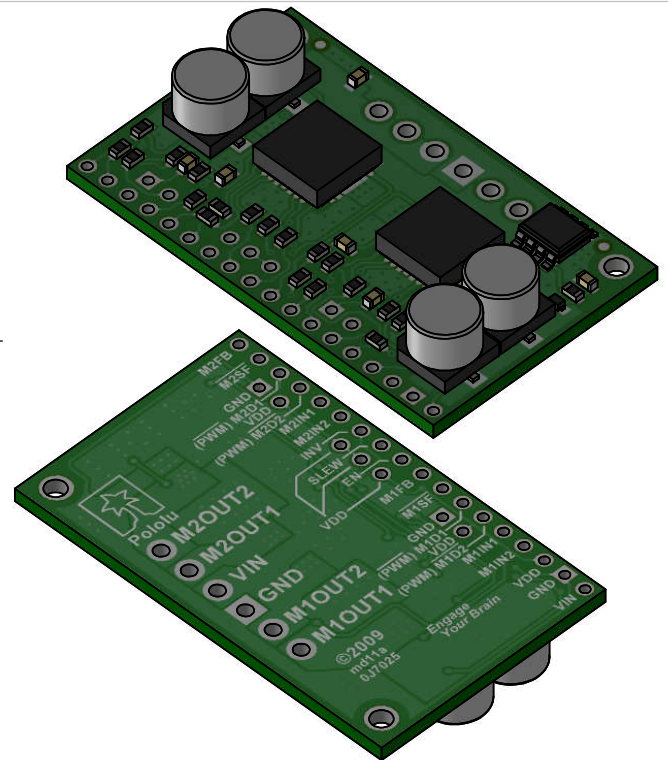


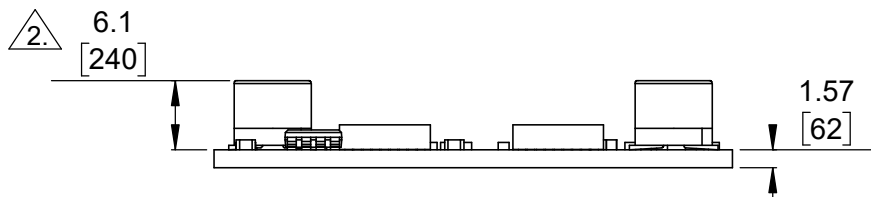
① Board dimensions (top view)
Scale 3:2



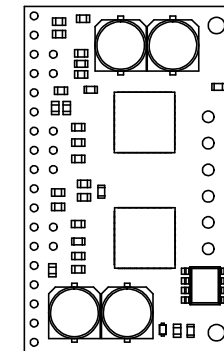
② Connector callouts (bottom view)
Scale 3:2



③ Isometric view
Scale 3:2



④ Profile
Scale 3:2



⑤ Actual size
Scale 1:1

①. Intended for #2 and M2 screws


②. Height of capacitors above the board is 7.8mm [307mil] for boards manufactured prior to December 2014.

3. To get the specified scale, select 100% in print settings.

4. Drill location tolerance: ± 0.1 [± 5].

5. Board edge tolerance: ± 0.3 [± 10].

<https://www.pololu.com/product/1213>

Name: Dual MC33926 Motor Driver Carrier		Item number: 1213
Drawing date: 26 October 2018	Dev code: md11a	 © 2018 Pololu Corporation
Units: mm [mil]	Material: mixed	