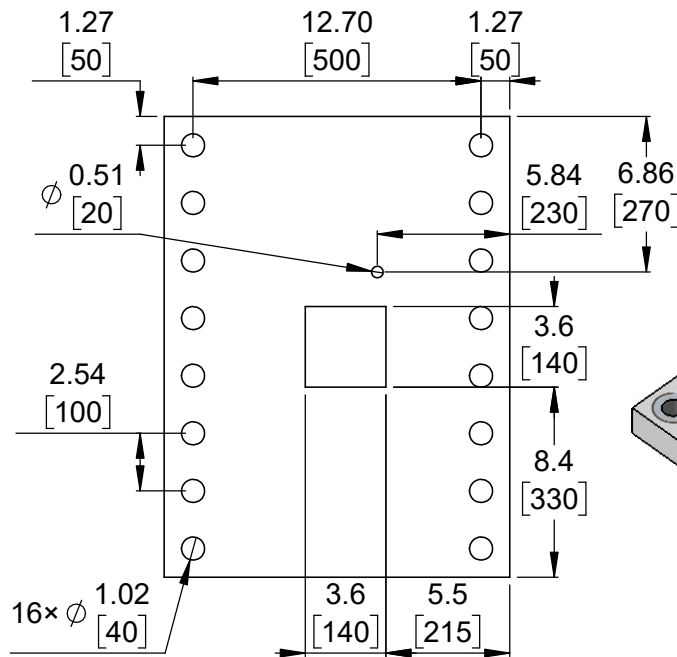
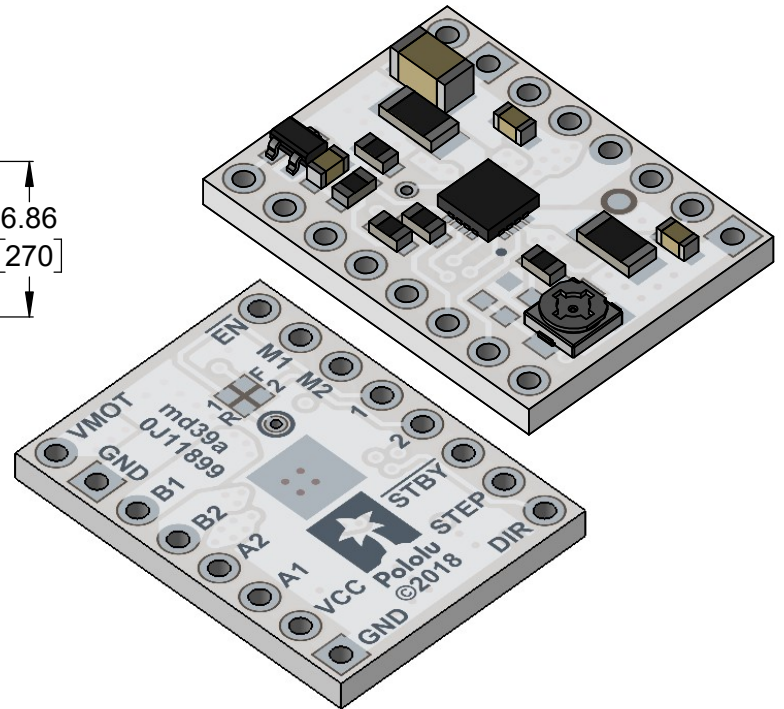


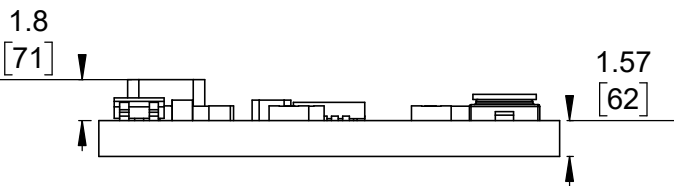
① Board dimensions (top view)
Scale 3:1



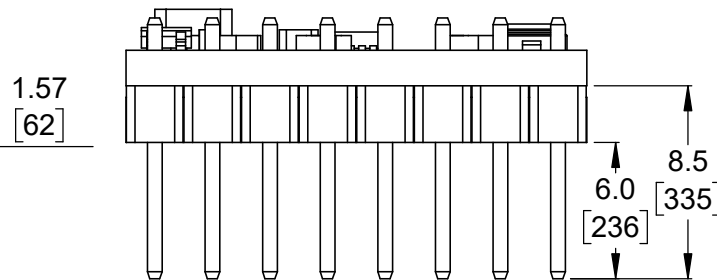
② Connector callouts (bottom view)
Scale 3:1



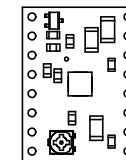
③ Isometric view
Scale 3:1



④ Profile
Scale 3:1




⑤ Profile (with through-hole connectors)
Scale 3:1



⑥ Actual size
Scale 1:1

1. To get the specified scale, select 100% in print settings.
2. Drill location tolerance: ± 0.1 [± 5].
3. Board edge tolerance: ± 0.3 [± 10].

<https://www.pololu.com/product/2876>

Name: STSPIN220 Stepper Motor Driver Carrier		Item number: 2876, 2877
Drawing date: 03 January 2019	Dev code: md39a	 Pololu Robotics & Electronics © 2019 Pololu Corporation
Units: mm [mil]	Material: mixed	