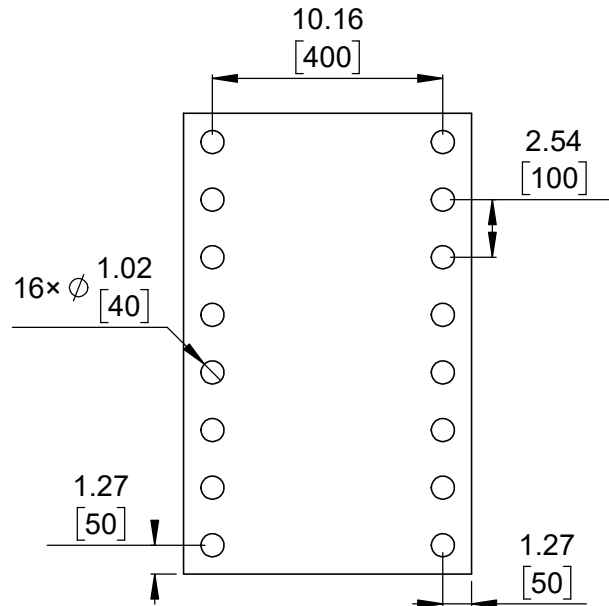
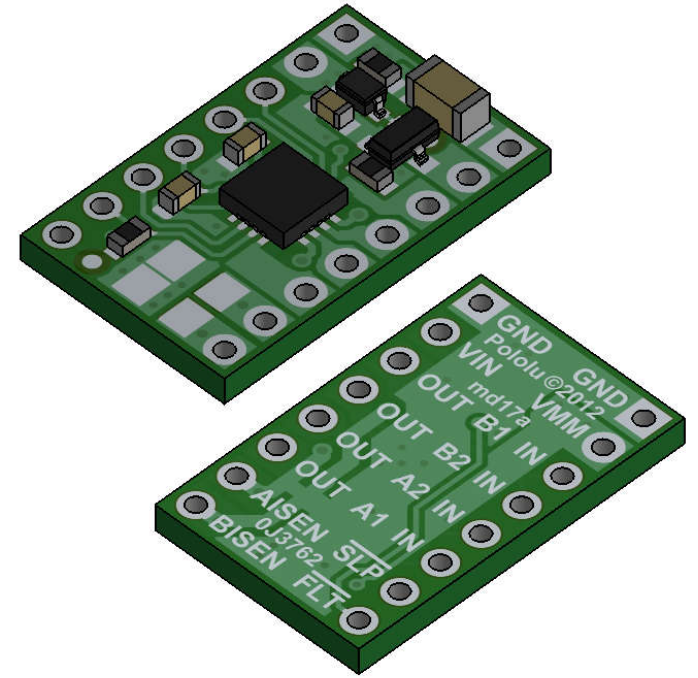


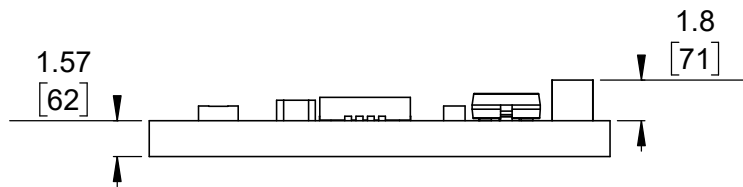
① Board dimensions (top view)
Scale 3:1



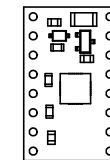
② Connector callouts (bottom view)
Scale 3:1



③ Isometric view
Scale 3:1



④ Profile
Scale 3:1



⑤ Actual size
Scale 1:1

1. To get the specified scale, select 100% in print settings.
2. Drill location tolerance: ± 0.1 [± 5].
3. Board edge tolerance: ± 0.3 [± 10].

<https://www.pololu.com/product/2130>

Name: DRV8833 Dual Motor Driver Carrier		Item number: 2130	
Drawing date: 26 October 2018		Dev code: md17a	
Units: mm [mil]		Material: mixed	

