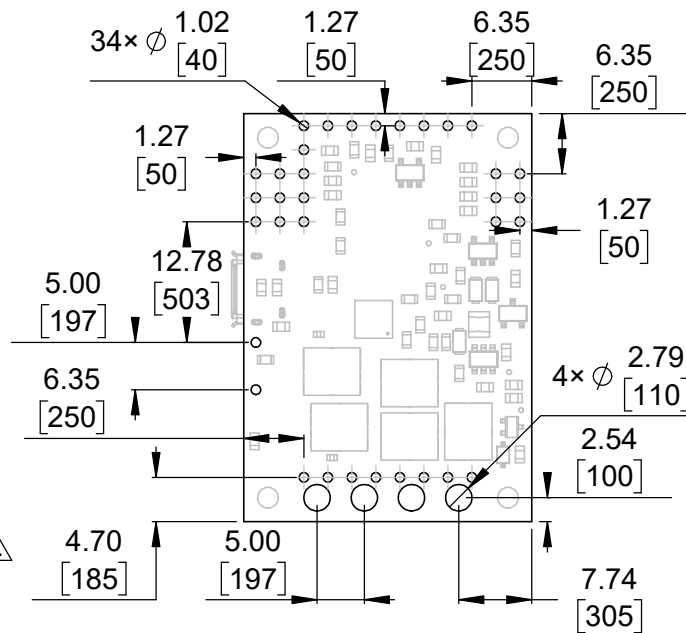


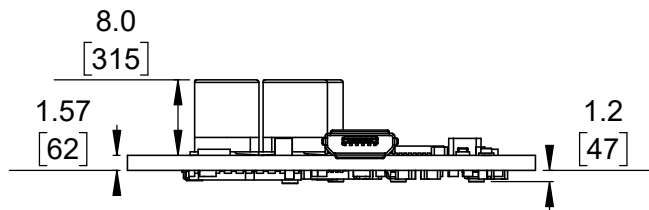
1 Board dimensions (top view)  
Scale 5:4



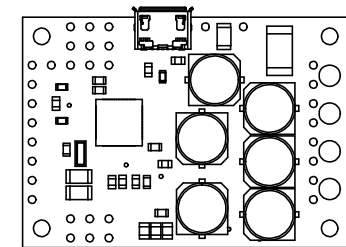
2 Connector callouts (bottom view)  
Scale 5:4



3 Isometric view  
Scale 5:4




4 Profile  
Scale 5:4



5 Actual size  
Scale 1:1

- 1. Intended for #2 and M2 screws.
- 2. Grid lines indicate 2.54 mm [100 mil] spacing.
- 3. To get the specified scale, select 100% in print settings.
- 4. Drill location tolerance:  $\pm 0.1$  [ $\pm 5$ ].
- 5. Board edge tolerance:  $\pm 0.3$  [ $\pm 10$ ].

<https://www.pololu.com/product/1366>

Name: Pololu High-Power Simple Motor Controller G2 18v25 or 24v19		Item number: 1366, 1367
Drawing date: 02 November 2018	Dev code: umc07a	 © 2018 Pololu Corporation
Units: mm [mil]	Material: mixed	