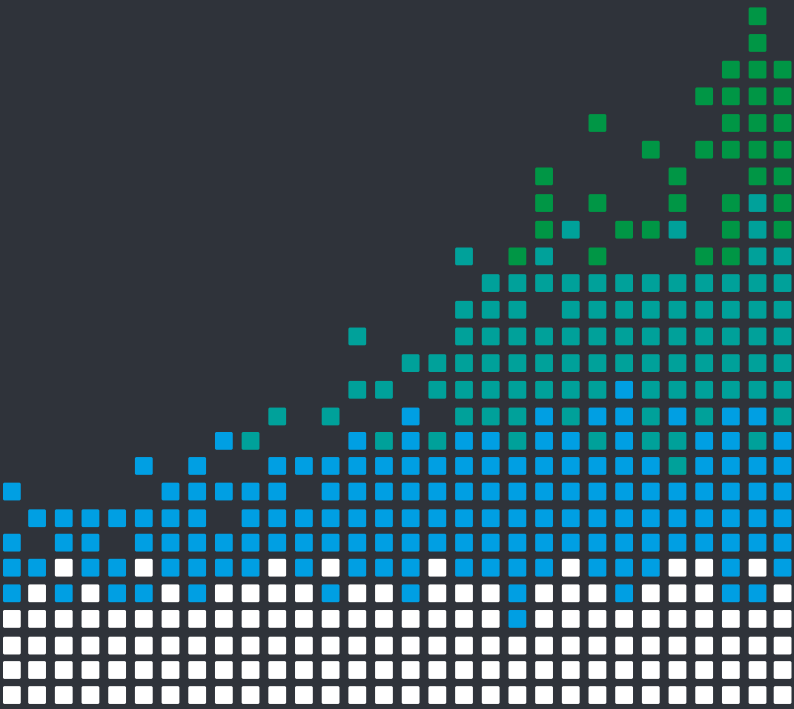


STAY ON TRACK WITH THIS

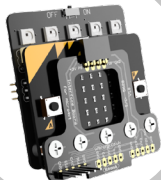
:MOVE LINE FOLLOW BOARD FOR BBC MICRO:BIT



BUILD INSTRUCTIONS

1

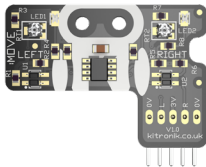
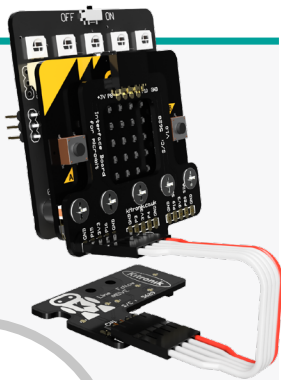
To use the Line Following board with the Interface board, first complete the build instructions provided with the Interface Board.



2

To use with the :MOVE mini, please see '**Use with :MOVE mini**' on the following page. If you wish to use this board separately connect the line follow board to the interface board in the order shown.

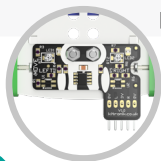
GND → 0V
P15 → R
3V3 → 3V
P16 → L
GND → 0V



USE WITH :MOVE MINI

1

If not done so already, remove both the front ':MOVE' piece (this is no longer required) and Servo:Lite board from the :Move mini. Fix the Line Follow board to the chassis using two M3x8mm countersunk screws. Insert the screws from above and fix in place with two M3 nuts.

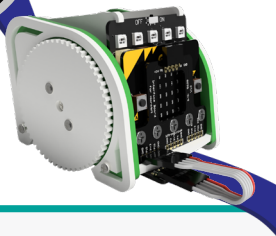


NOTE: Make sure you use the board the correct way up, with the larger Kit robot visible from below.

2



Connect the servos and install the Servo:Lite/Interface board assembly into the :MOVE mini. Reconnect the cables, refer to step 2 from the 'Build instructions' on the previous page.



3

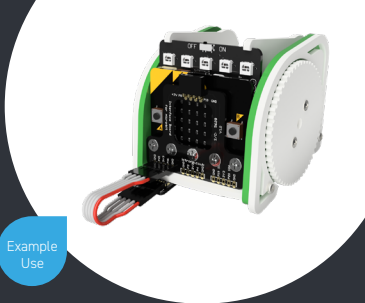
GET CODING!

Visit kitronik.co.uk/5629 for help. See the online datasheet for a tuning guide.





Add line following to your micro:bit buggy/robots with the compact Kitronik :Move Line Following Board For BBC micro:bit, also fully compatible with :MOVE mini.



Example Use



TOOLS REQUIRED:

- Small Phillips screwdriver



INSTRUCTIONS:

This booklet contains build instructions. For more detailed resources please visit our website at www.kitronik.co.uk/5629



KIT REQUIRES:

- 1 x BBC micro:bit
- 1 x :MOVE Sensor Interface board (optional)
- 1 x :MOVE mini buggy kit (optional)



STOCK CODE:

5629



WARNING : Contents may inspire creativity

T: 0845 8380781

W: www.kitronik.co.uk

E: support@kitronik.co.uk



[kitronik.co.uk/twitter](https://twitter.com/kitronik)



[kitronik.co.uk/facebook](https://facebook.com/kitronik)




[kitronik.co.uk/youtube](https://youtube.com/kitronik)



[kitronik.co.uk/google](https://google.com/kitronik)



Designed & manufactured
in the UK by 



For more information on RoHs and CE please visit kitronik.co.uk/rohs-ce. Children assembling this product should be supervised by a competent adult. The product contains small parts so should be kept out of reach of children under 3 years old.