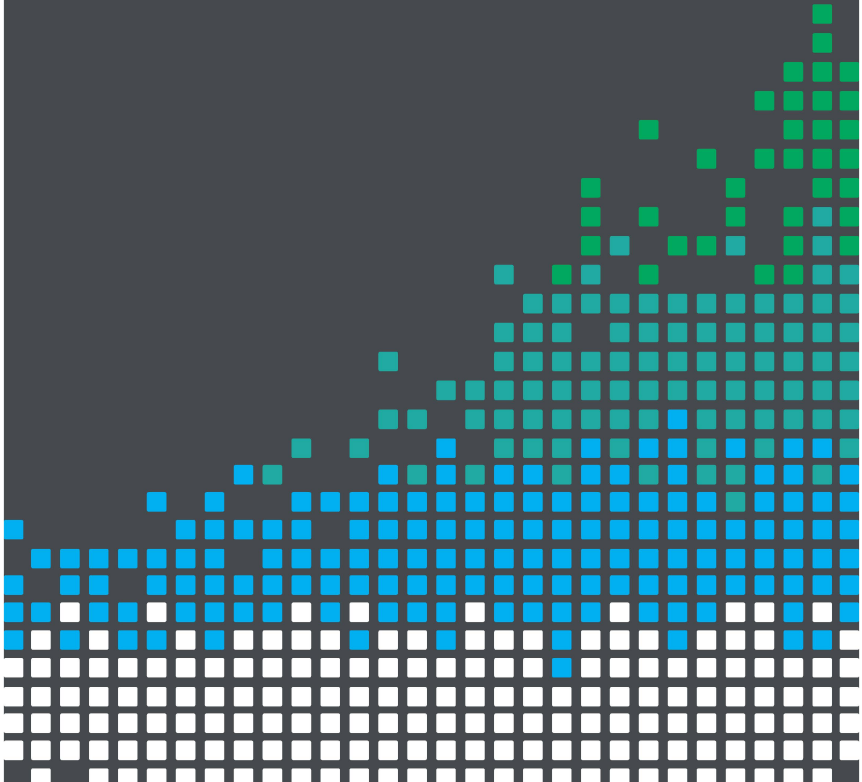




GET LIFTING WITH THE

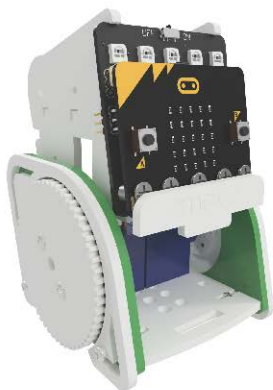
# :MOVE Mini BULLDOZER ADD-ON



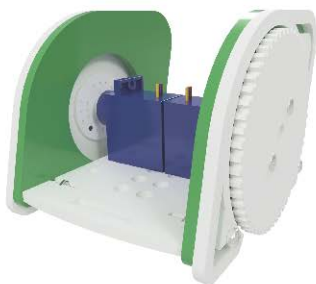
# BUILD INSTRUCTIONS

1

Take the :MOVE mini and remove the front ':MOVE' piece, followed by the SERVO:LITE board, and then the interior panels. Screws on the underside will need to be removed for this.

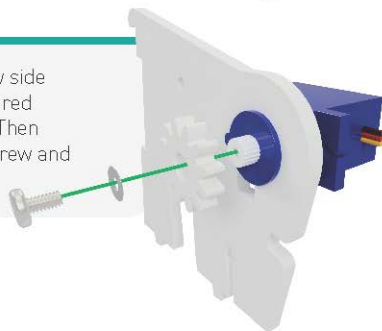


**NOTE:** If not done already, the SERVO:LITE board will need to be converted for use of three servos. Visit [kitronik.co.uk/movemini](http://kitronik.co.uk/movemini) for the online guide.



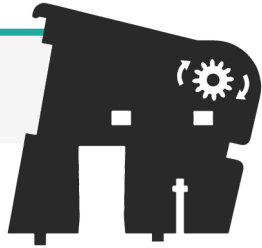
2

Slot the servo into the new side panels, connecting the geared part onto the servo shaft. Then secure it with the servo screw and washer.



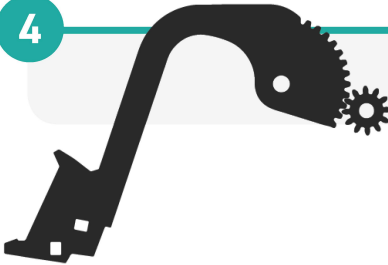
3

Gently rotate the servo gear until it reaches its maximum anticlockwise position.



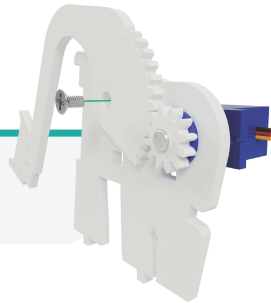
4

Align the arm with the gear as shown.



5

Use one of the M3 Countersunk screws to attach the bulldozer arm.



6

Repeat for opposite side, using the arm which does not have the gear tooth profile.



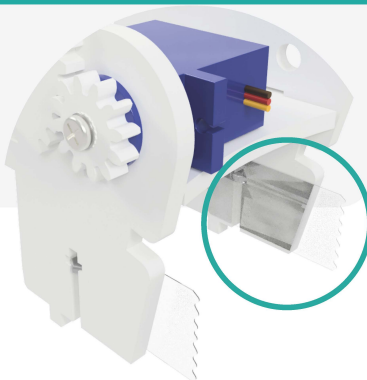
7

Using the smaller M2 screws, slot the scoops in between the two arms, and secure in place. Then slot the boot lid under the servo.



8

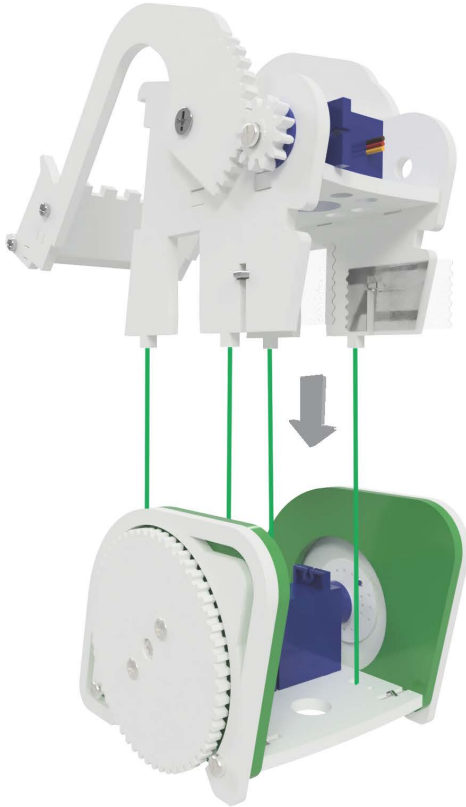
Place some tape over the inside of each side panel and insert M2 nuts. This will help to keep the nuts secure in the slot for the next step.



**NOTE:** If you do not have any tape available - you will need to disassemble your :MOVE mini and follow the instructions from the original :MOVE mini manual. Simply replace the two inner side panels with this module you have just built.

9

Slot the bulldozer module in between the two exterior sides as shown below.



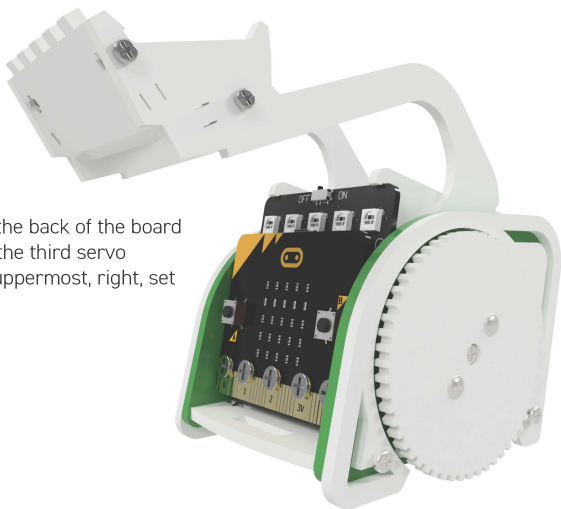
10

Use a screwdriver to tighten the screws and lock the module in place. Once secure, remove the tape.



11

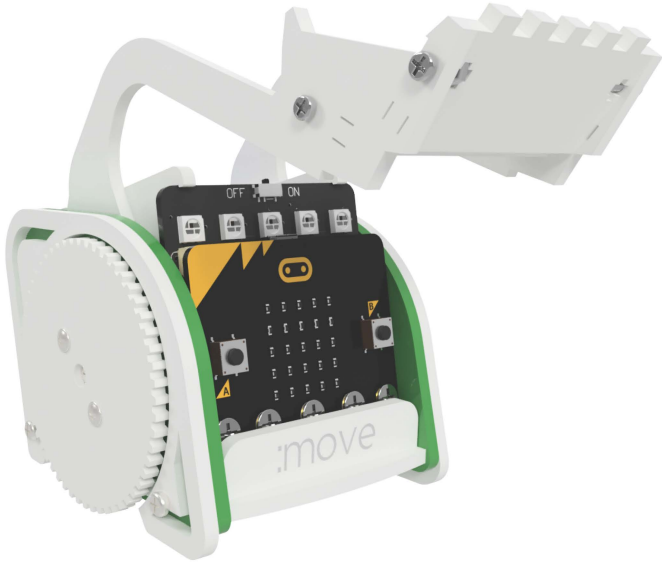
Re-attach the three servo cables, and return the SERVO:LITE board back into :MOVE mini.



**NOTE:** With the back of the board facing you - the third servo attaches to uppermost, right, set of pins.

12

Replace the :MOVE piece.



13

GET CODING!  
Visit [kitronik.co.uk/movemini](http://kitronik.co.uk/movemini) for help.



**TOOLS REQUIRED**

- Small Phillips Screwdriver

**STOCK CODE**

5624-BD



**WARNING** : Contents may inspire creativity

---

T: 0845 8380781

---

W: [www.kitronik.co.uk](http://www.kitronik.co.uk)

---

E: [support@kitronik.co.uk](mailto:support@kitronik.co.uk)

---

 **Designed & manufactured  
in the UK by** 



[kitronik.co.uk/twitter](https://twitter.com/kitronik)



[kitronik.co.uk/facebook](https://www.facebook.com/kitronik)



[kitronik.co.uk/youtube](https://www.youtube.com/kitronik)



[kitronik.co.uk/google](https://www.google.com/kitronik)



For more information on RoHs and CE please visit [kitronik.co.uk/rohs-ce](http://kitronik.co.uk/rohs-ce).  
Children assembling this product should be supervised by a competent adult. The product contains small parts so should be kept out of reach of children under 3 years old.